

Issues and Concerns Watershed

**Guadalupe River Basin
2014**

Issues and Concerns

- Category 5 – water body does not meet applicable water quality standards for one or more designated uses
 - 5a – a TMDL or WPP is underway, scheduled or will be scheduled
 - 5b – a review of water quality standards will be conducted
 - 5c – Additional data and info will be collected
 - Example – Sandies Creek

- Category 4 – Standard is not supported but does not require a Total Maximum Daily Load (TMDL)
 - 4a – TMDL has been completed and approved by EPA
 - 4b – Activities being conducted that will result in improved water quality
 - Example – Plum Creek

Issues and Concerns

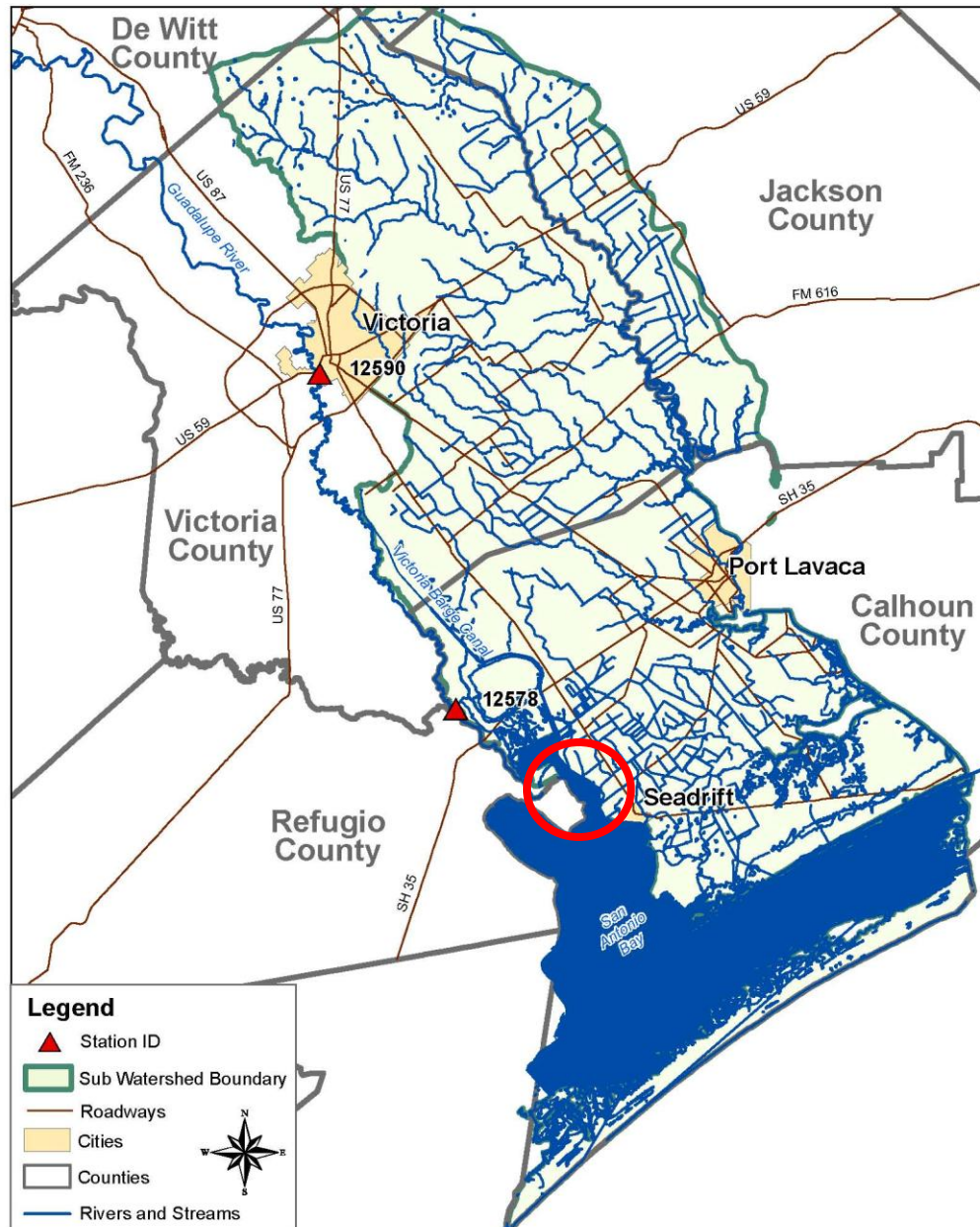
- Concerns
 - Exceeds screening concentration (CS)
 - Example: Plum Creek
 - Nitrate Nitrogen, Ammonia Nitrogen, Total Phosphorus
 - Has Use Concern (CN)
 - Example: Guadalupe River below San Marcos River
 - Bacteria Geometric Mean- 141 organisms/100 mL

Priority Water Bodies

- Guadalupe River Tidal (Segment 1801)
 - Depressed Dissolved Oxygen
 - Nitrate-Nitrogen
 - Listed with concerns in 2002



Guadalupe-Lavaca Coastal Basin

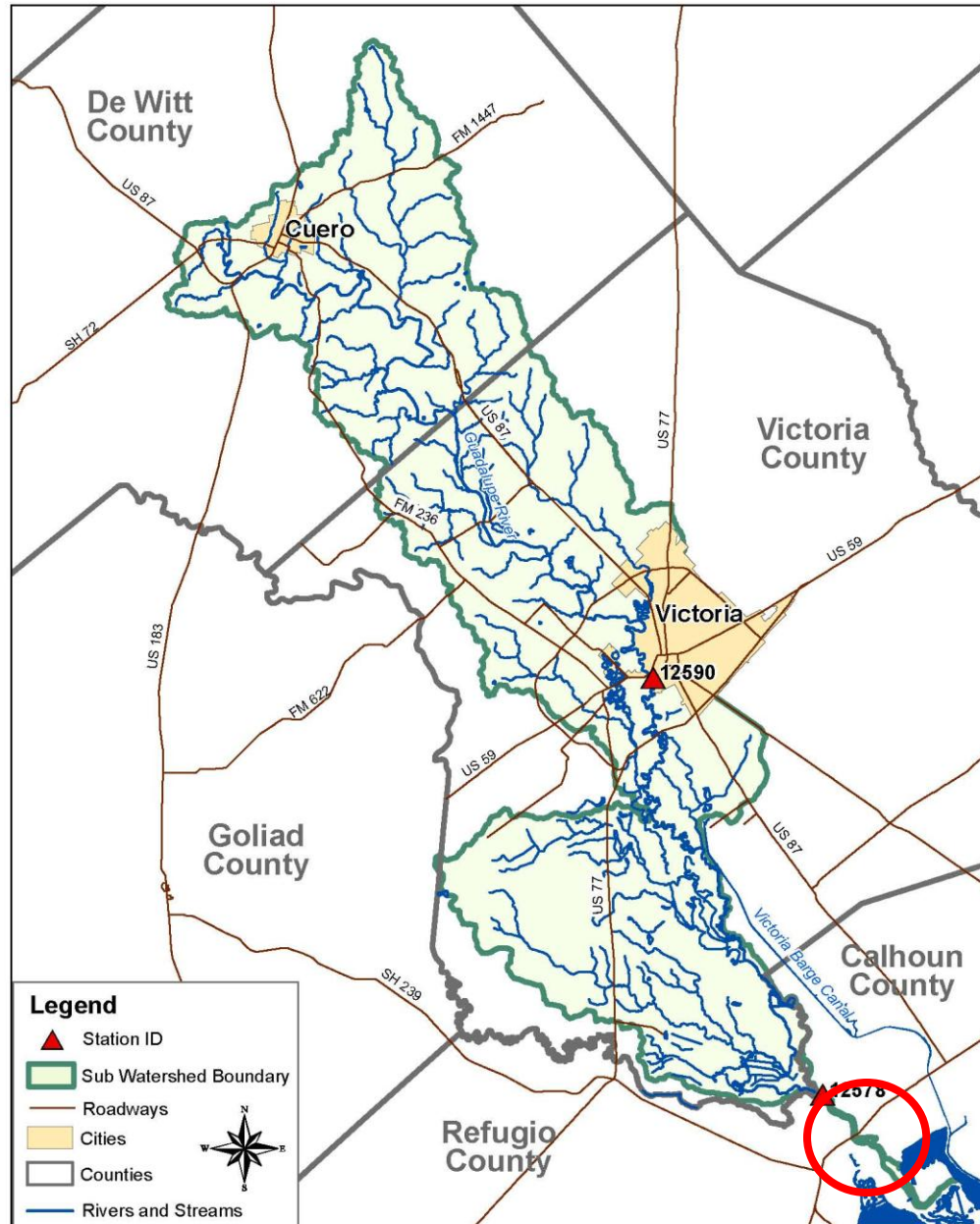


Priority Water Bodies

- Guadalupe River Below San Antonio River (Segment 1802)
 - Nitrate Nitrogen
 - Listed with concerns in 2002



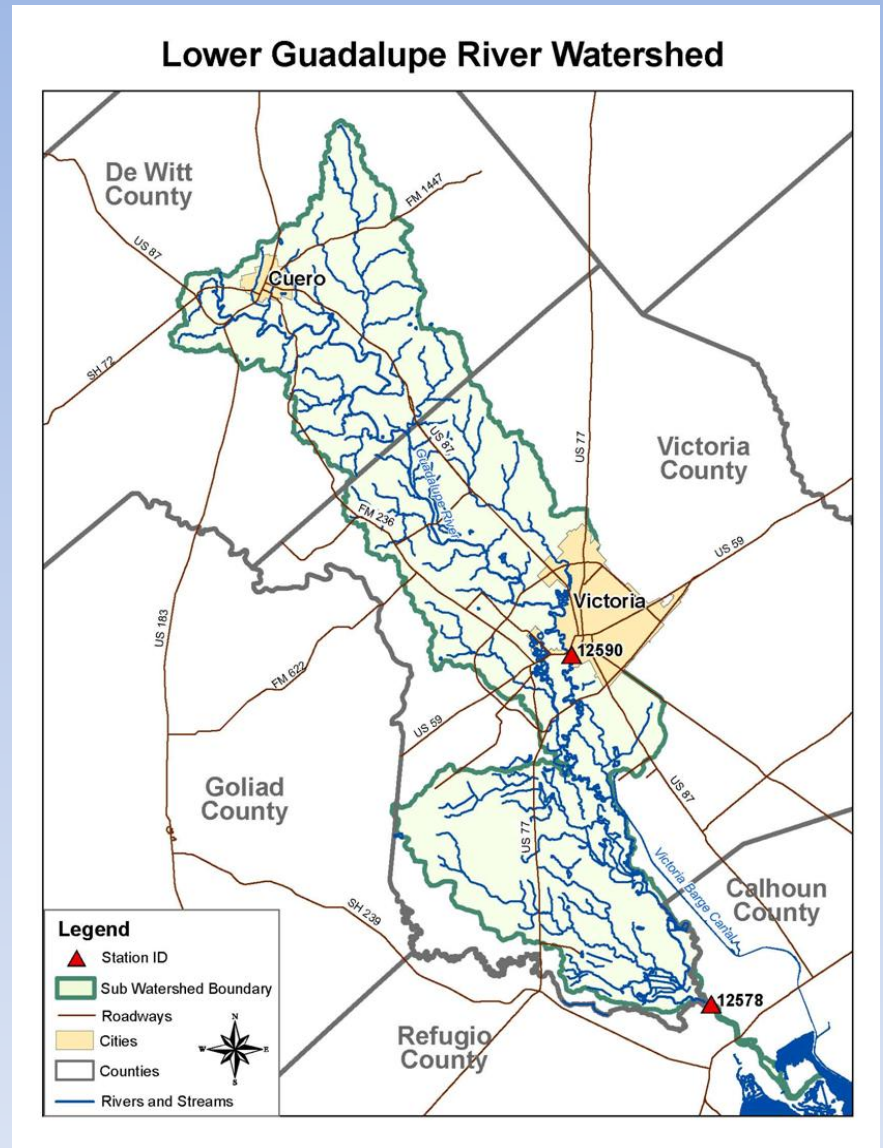
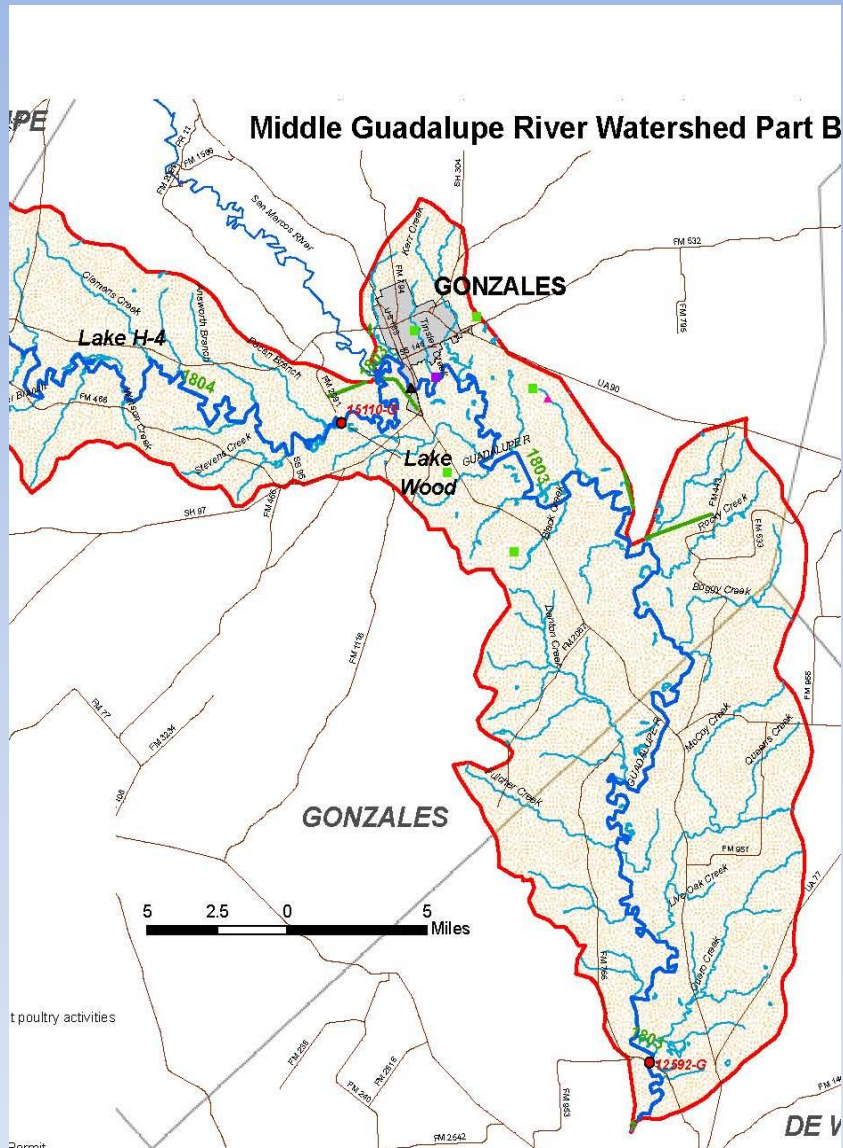
Lower Guadalupe River Watershed



Priority Water Bodies

- Guadalupe River Below San Marcos River (Segment 1803)
 - 1803_04 – 25 mi from confluence with Coleta Creek upstream to confluence with Sandies Creek
 - Bacteria
 - Listed not supporting in 2012



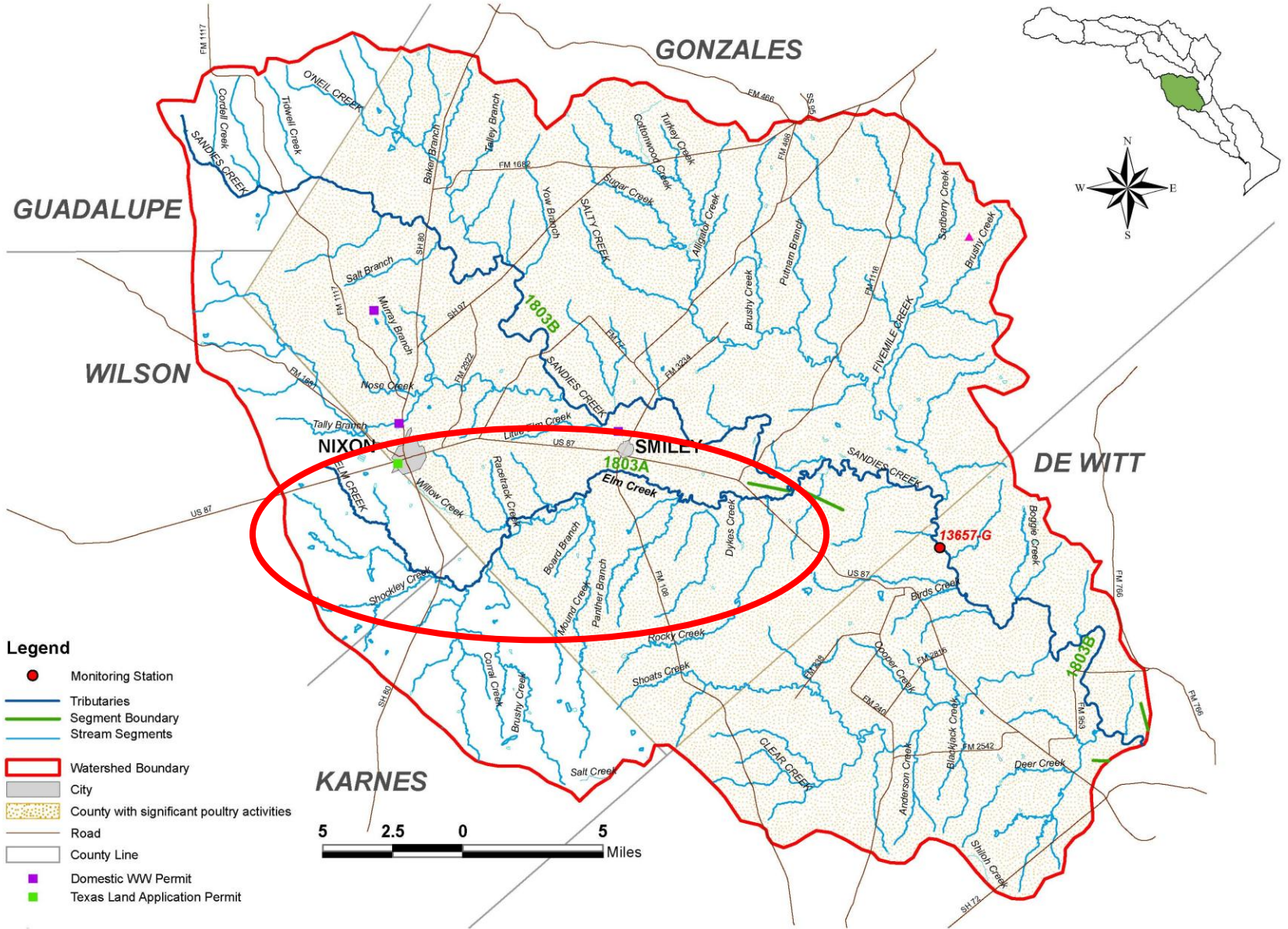


Priority Water Bodies

- Elm Creek (Segment No. 1803A)
 - Depressed Dissolved Oxygen
 - Listed in 1999
 - Category 5b



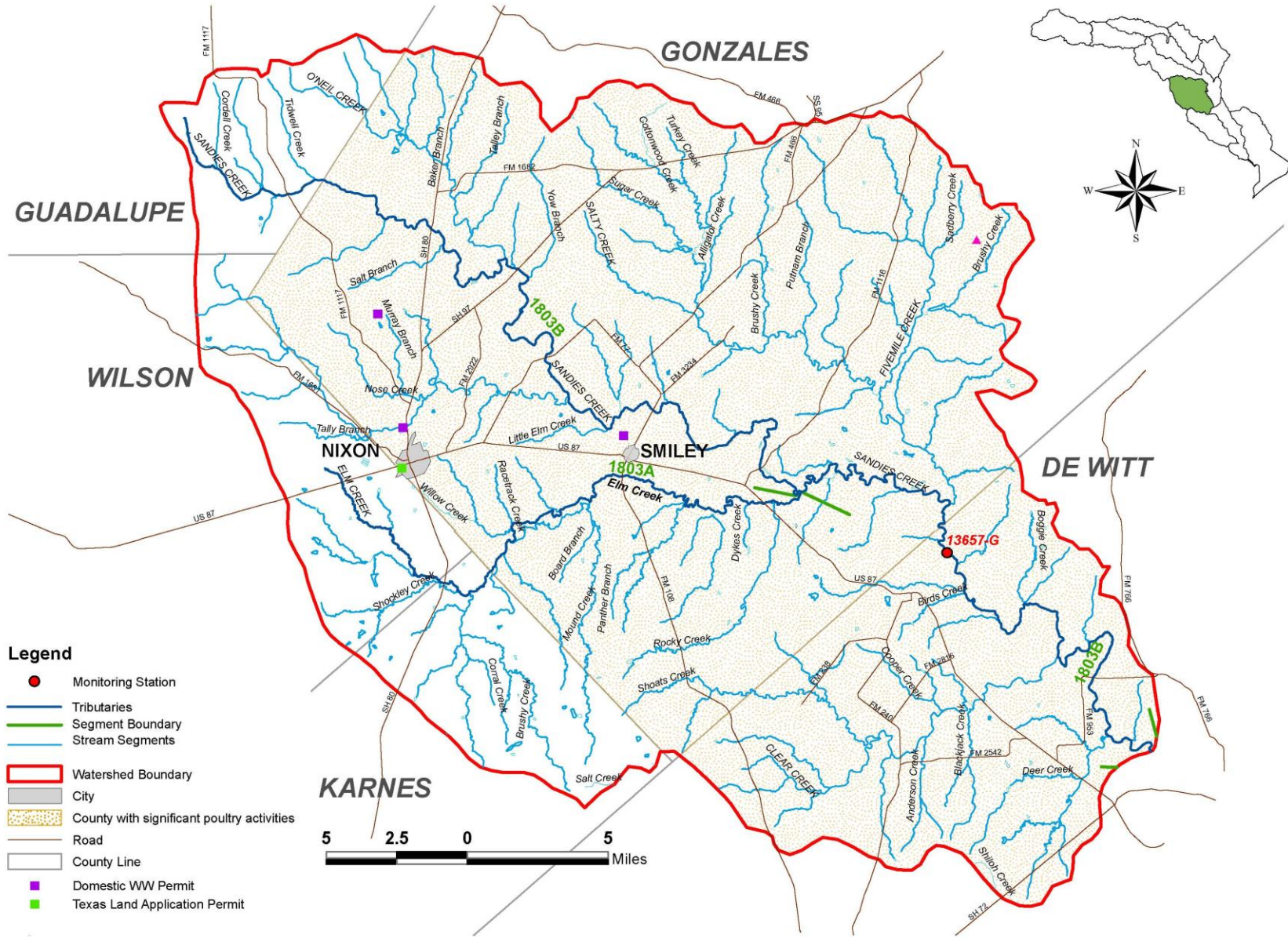
Sandies Creek Watershed



Priority Water Bodies

- Sandies Creek (Segment 1803A)
 - Depressed Dissolved Oxygen
 - Impaired Biological Habitat and Communities
 - Habitat, fish and macroinvertebrates
 - Bacteria
 - Listed in 1999
 - Categories 5b



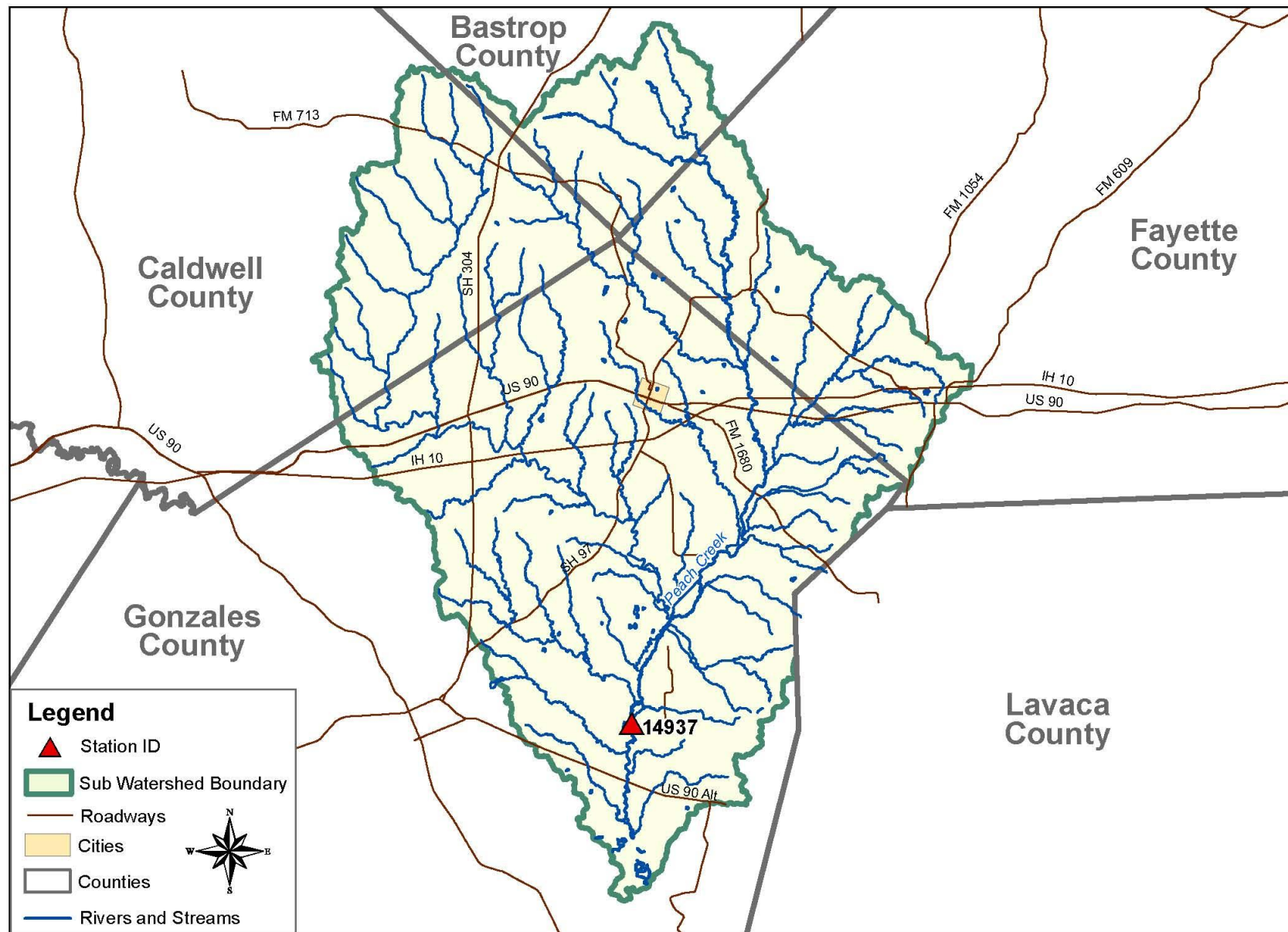


Priority Water Bodies

- Peach Creek (Segment No. 1803C)
 - Depressed Dissolved Oxygen
 - Bacteria
 - Chlorophyll a
 - Listed in 2002
 - Categories 5b and 5c



Peach Creek Watershed

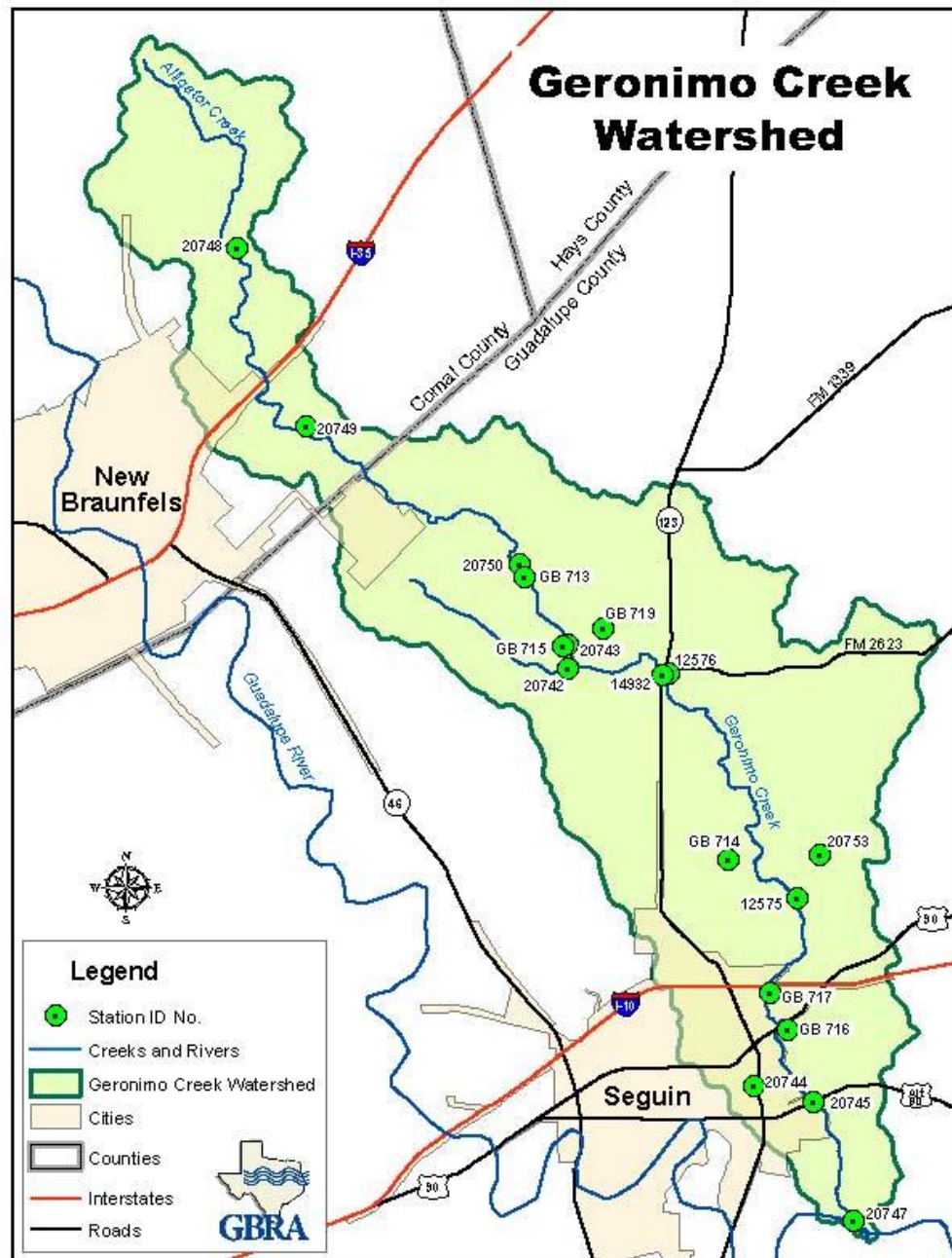


Priority Water Bodies

- Geronimo Creek (Segment No. 1804A)
 - Nitrate Nitrogen
 - Bacteria
 - Listed in 2006
 - Category 5c



Geronimo Creek Watershed

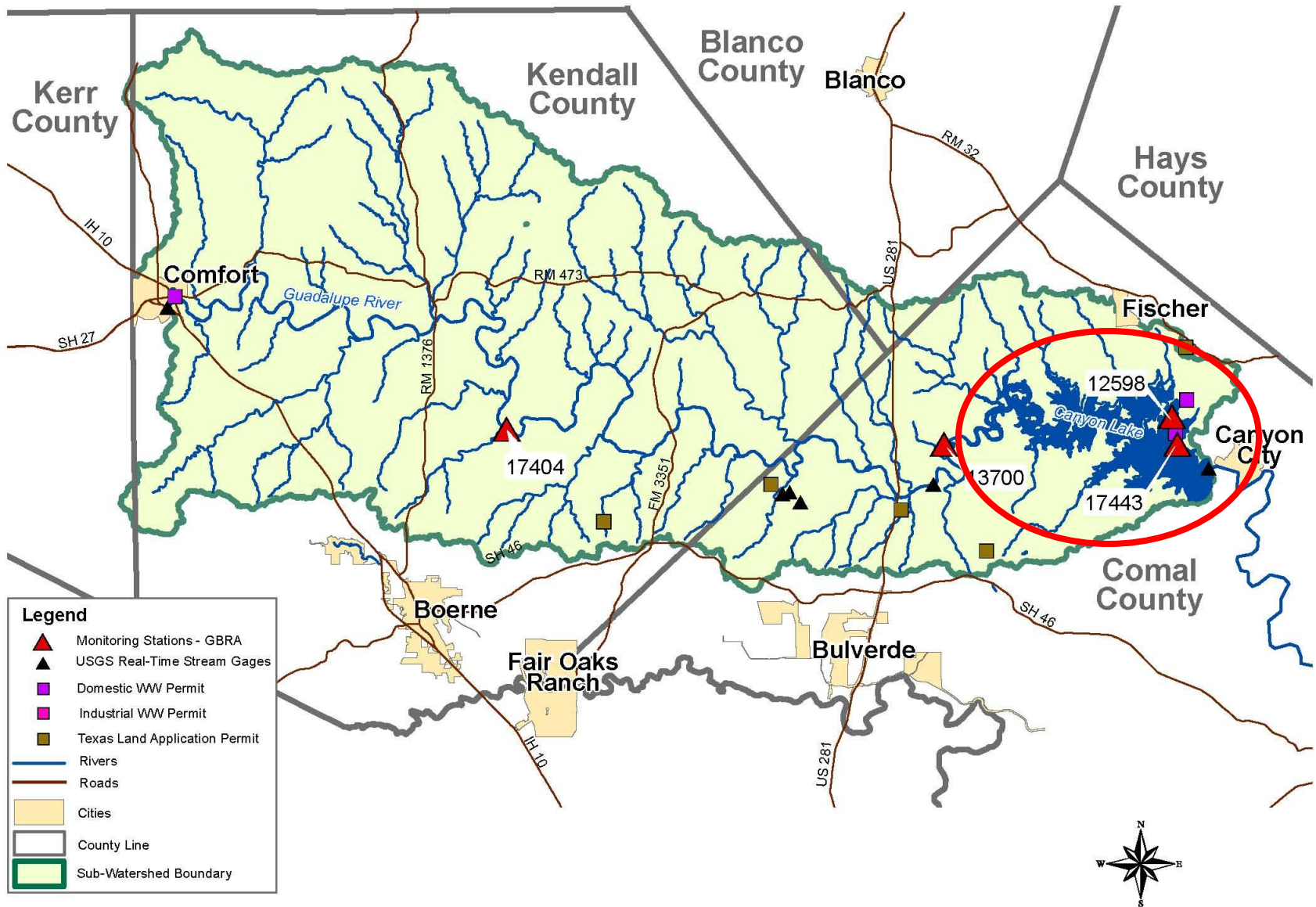


Priority Water Bodies

- Canyon Lake (Segment 1805)
 - Mercury in Fish Tissue
 - Listed in 2006
 - Category 5c



Guadalupe River Below Comfort



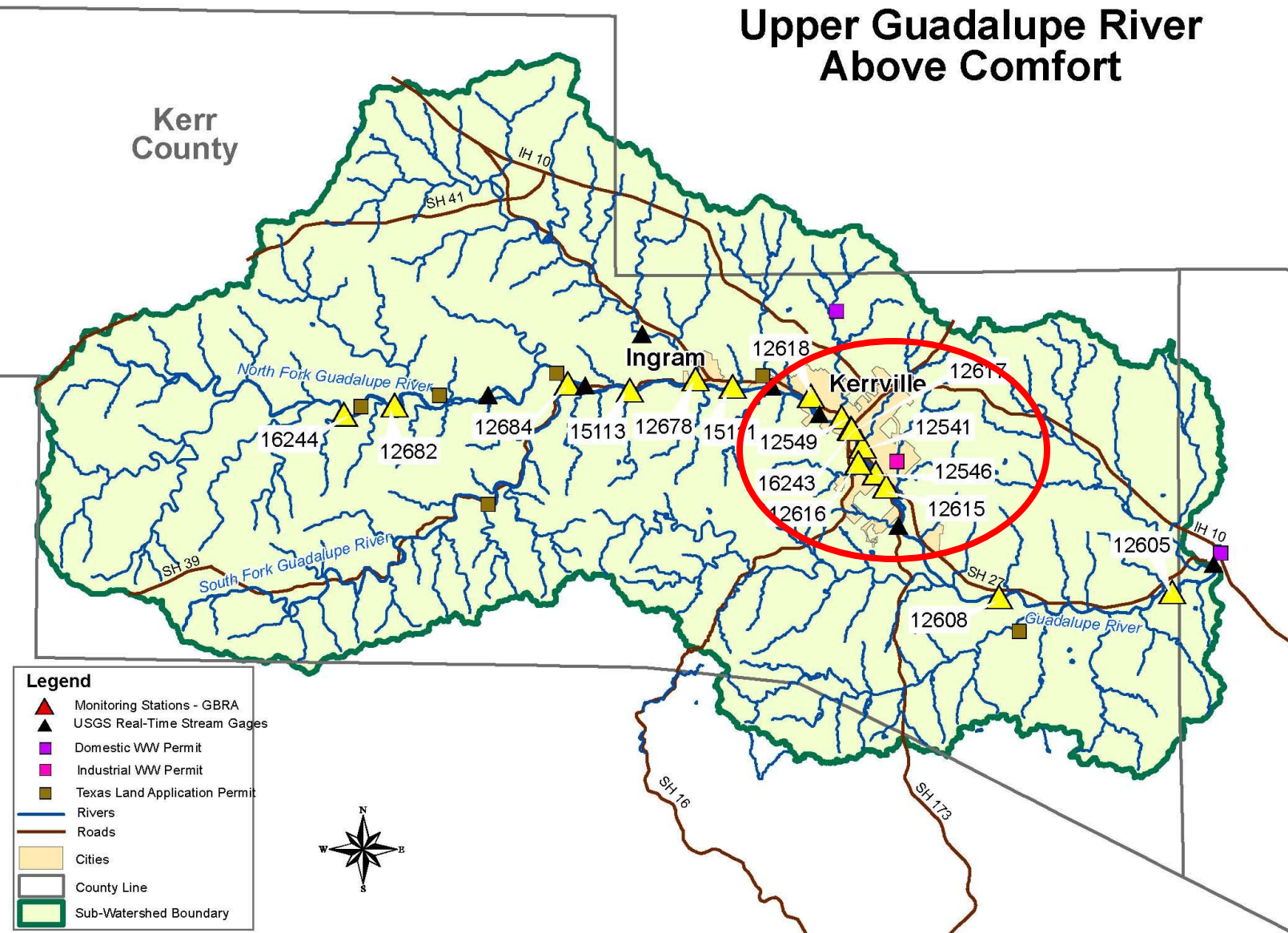
Priority Water Bodies

- Guadalupe River Above Canyon Reservoir (Segment 1806)
 - Portions of the segment from confluence with Third Creek to confluence of Town Creek; confluence with Honey Creek to confluence of Joshua Creek - Kerr Co.
 - Bacteria
 - Listed in 1999
 - Category 4a



Upper Guadalupe River Above Comfort

Kerr
County



Priority Water Bodies

- Quinlan Creek (Segment 1806D)
 - Bacteria
 - Listed in 2010
 - Category 5a

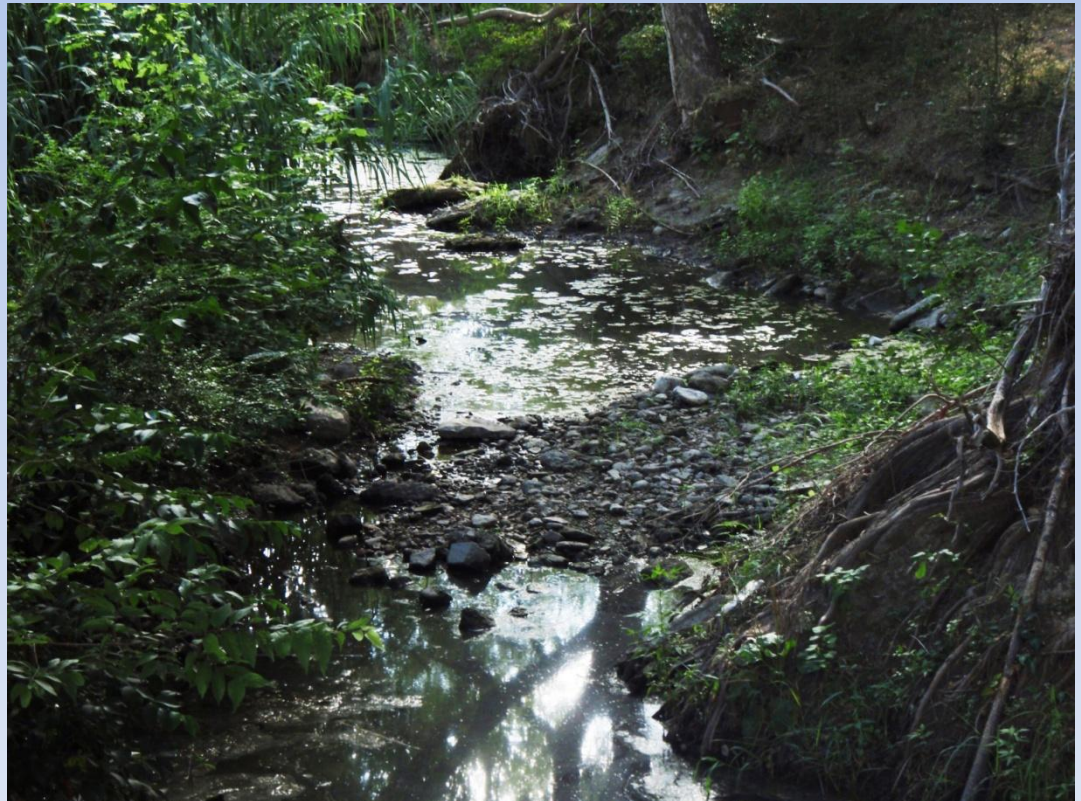


Upper Guadalupe River Above Comfort



Priority Water Bodies

- Town Creek (Segment 1806E)
 - Bacteria
 - Listed in 2010
 - Category 5a



Upper Guadalupe River Above Comfort

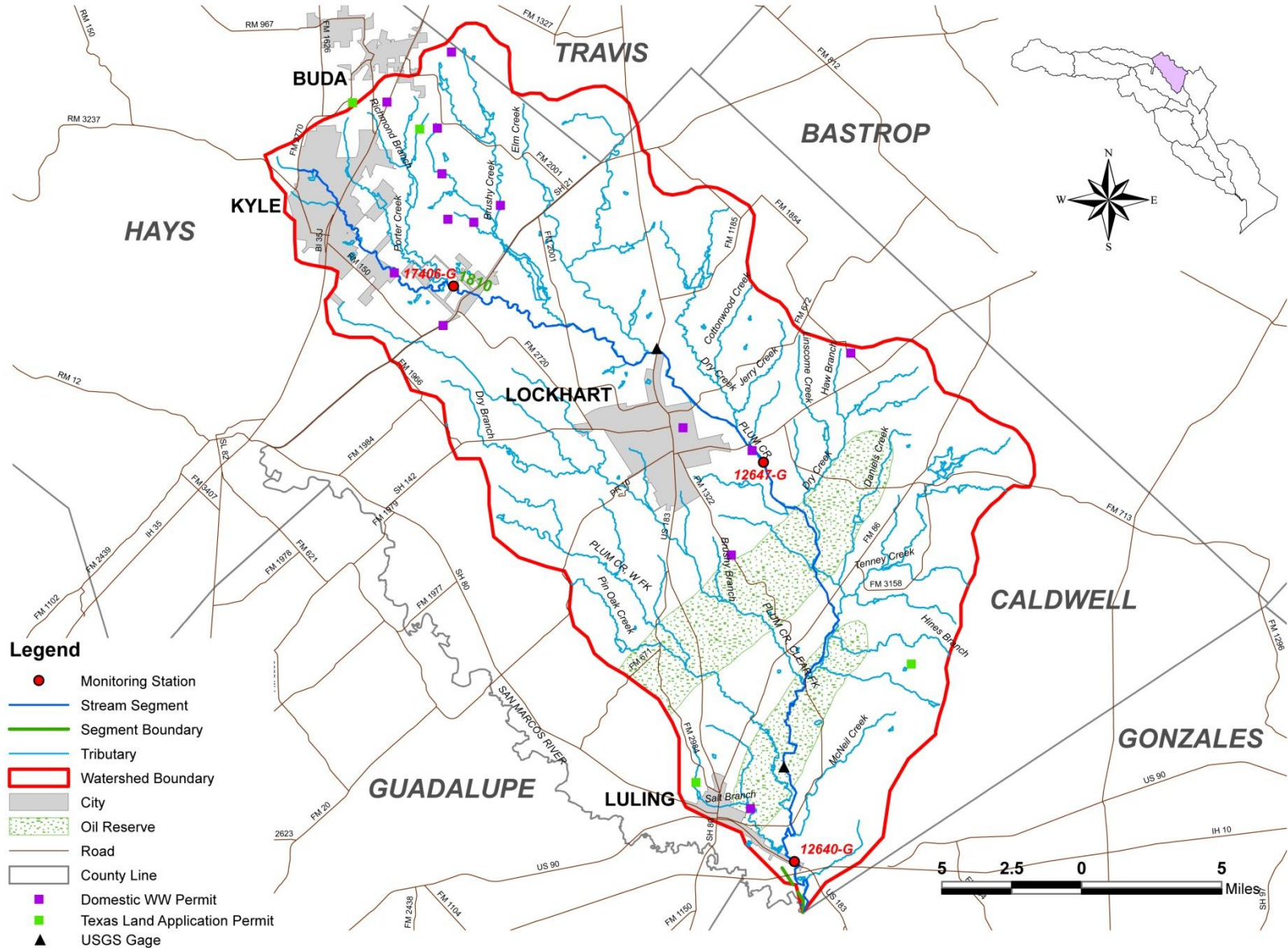


Priority Water Bodies

- Plum Creek (Segment 1810)
 - Bacteria
 - Nitrate-Nitrogen
 - Total Phosphorus
 - Ortho-Phosphorus
 - Depressed DO
 - Listed in 2004
 - Category 4b



Plum Creek Watershed

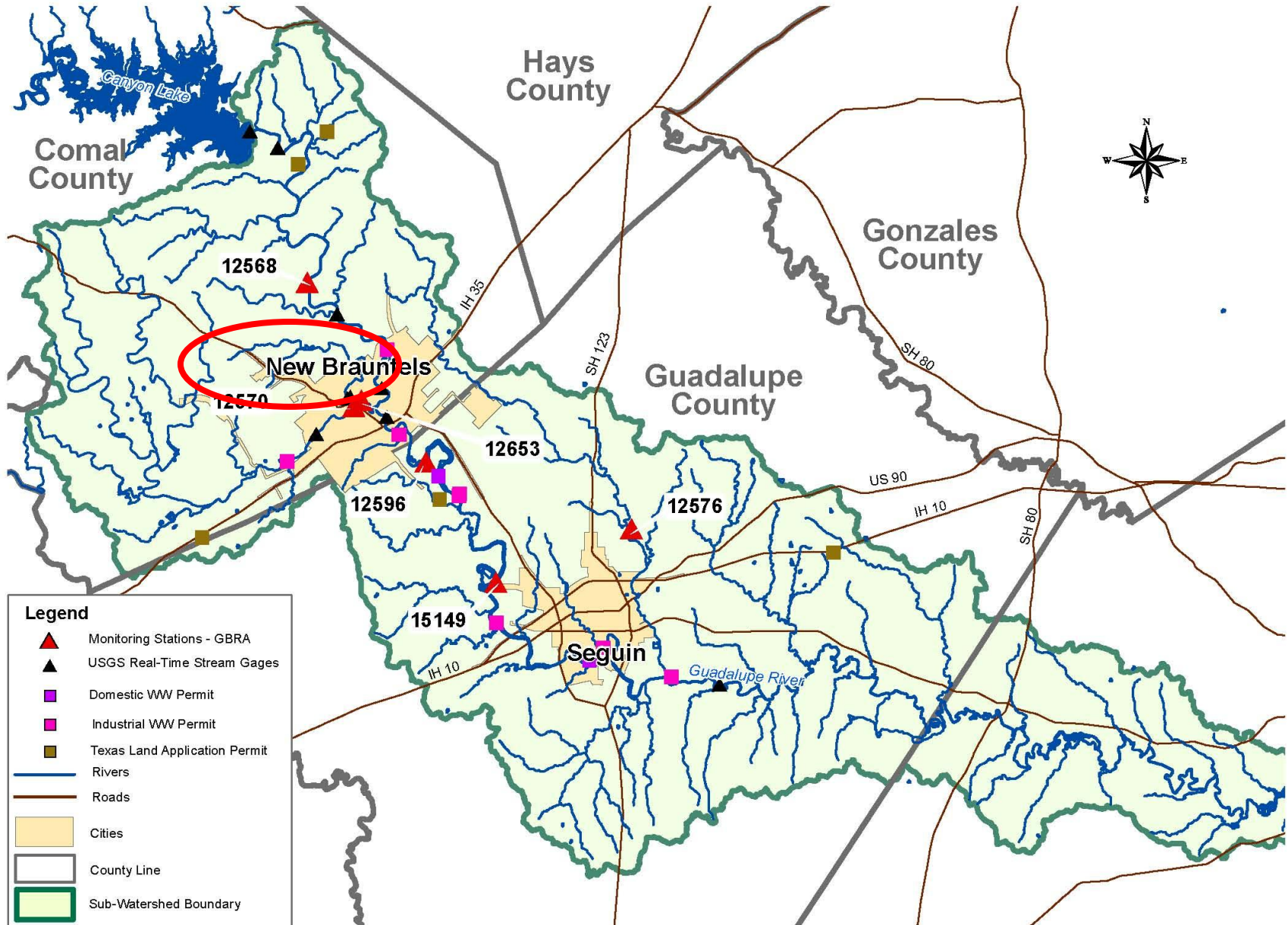


Priority Water Bodies

- Comal River (Segment 1811)
 - Not listed
 - Sensitive Water Body



Middle Guadalupe River Watershed Part A

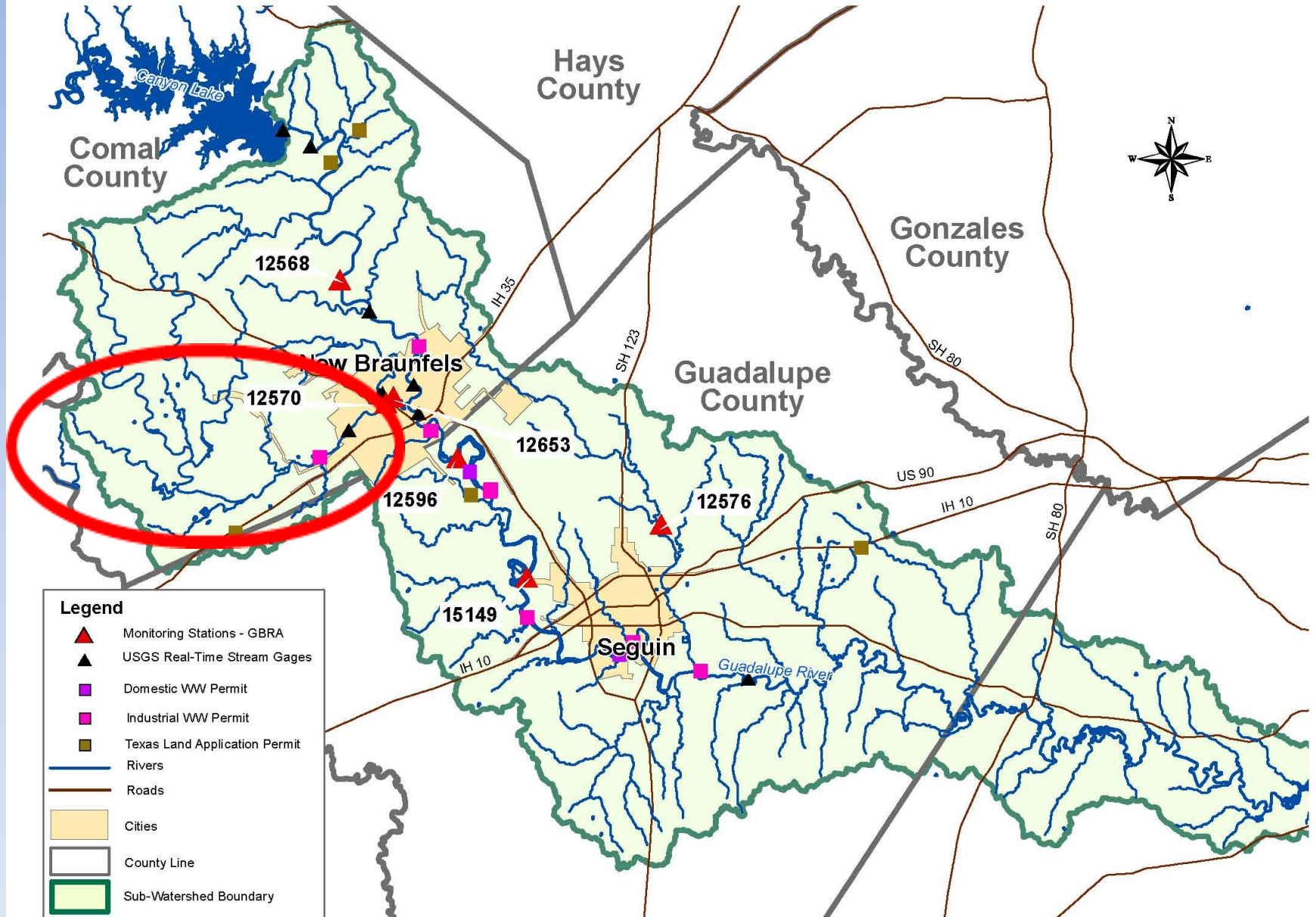


Priority Water Bodies

- Dry Comal Creek (Segment 1811A)
 - Bacteria
 - Listed in 2010
 - Category 5b



Middle Guadalupe River Watershed Part A

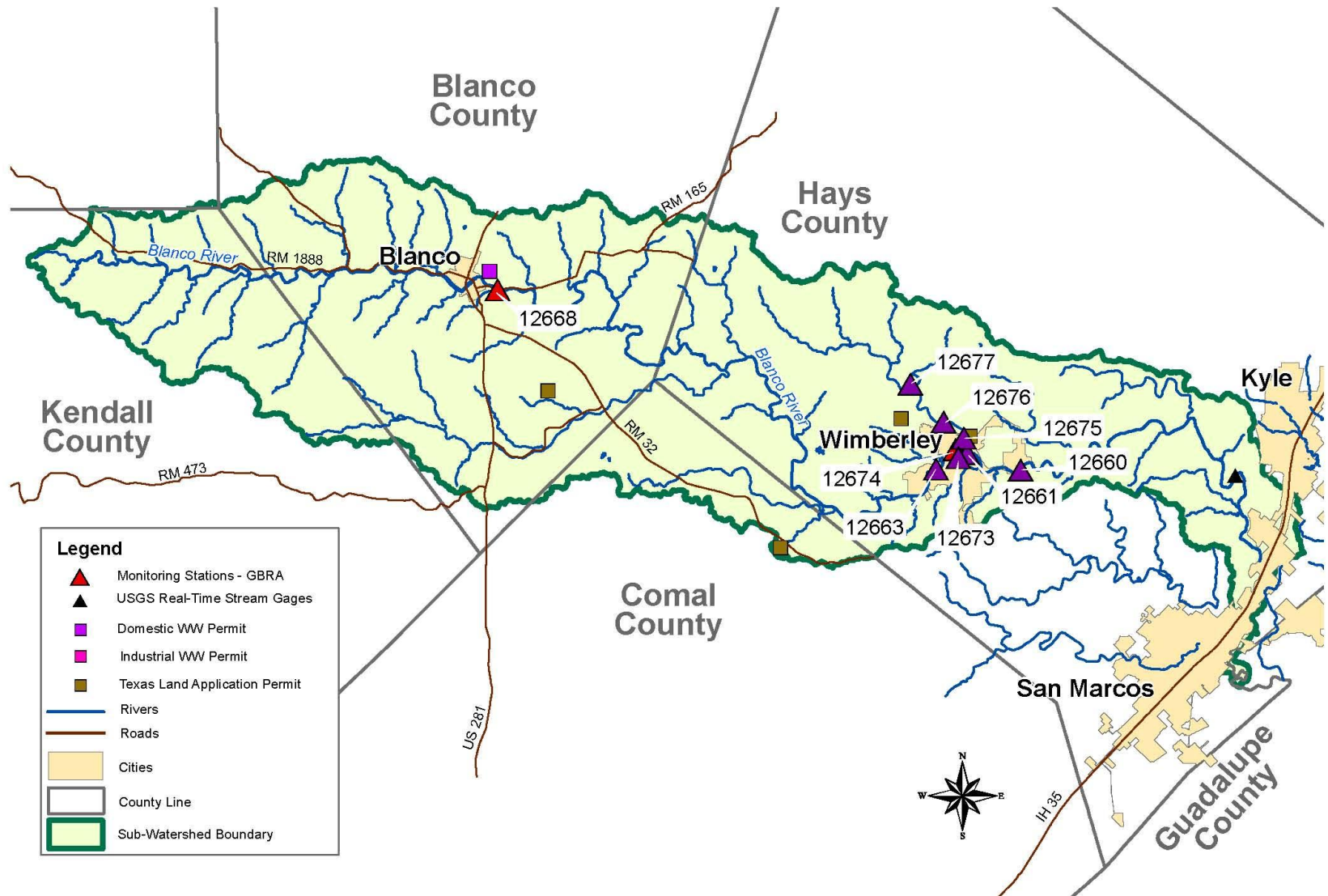


Priority Water Bodies

- Upper Blanco River (Segment 1813)
 - Depressed DO
 - Listed in 2006
 - No category assigned



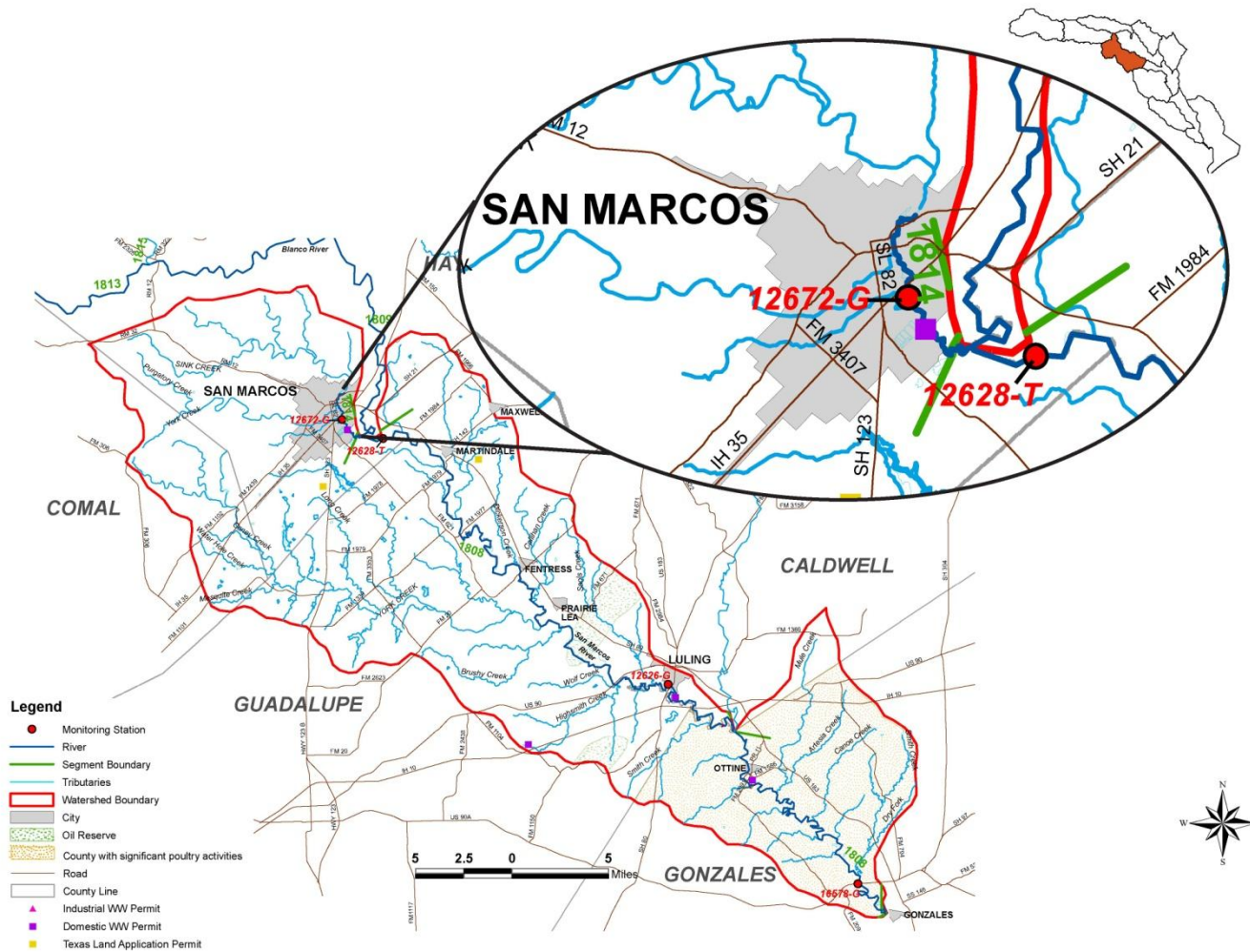
Blanco River Watershed



Priority Water Bodies

- Upper San Marcos River (Segment 1814)
 - Total Dissolved Solids
 - Listed in 2010
 - Category 5c





Priority Water Bodies

- Cypress Creek (Segment 1815)
 - Depressed DO (Listed in 2010)
 - Impaired Habitat, Fish and Macroinvertebrate Community
 - Bacteria – stakeholder concern



WVWA Sampling Sites

