

Clean Rivers Program Guadalupe River Basin

2013 Update

Debbie Magin
March 20, 2014

Clean Rivers Program

- Project Administration
- Quality Assurance
- Water Quality Monitoring
- Data Review and Reporting
- Annual Reports
- Public Participation



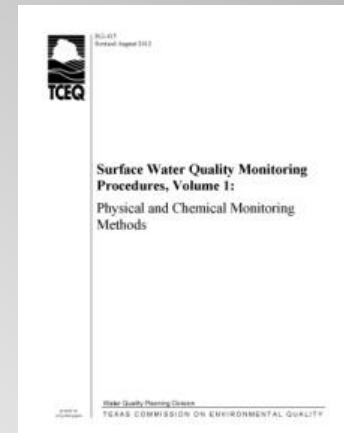
Clean Rivers Program

- Partners:
 - Guadalupe Blanco River Authority
 - Upper Guadalupe River Authority
 - Wimberley Valley Watershed Association

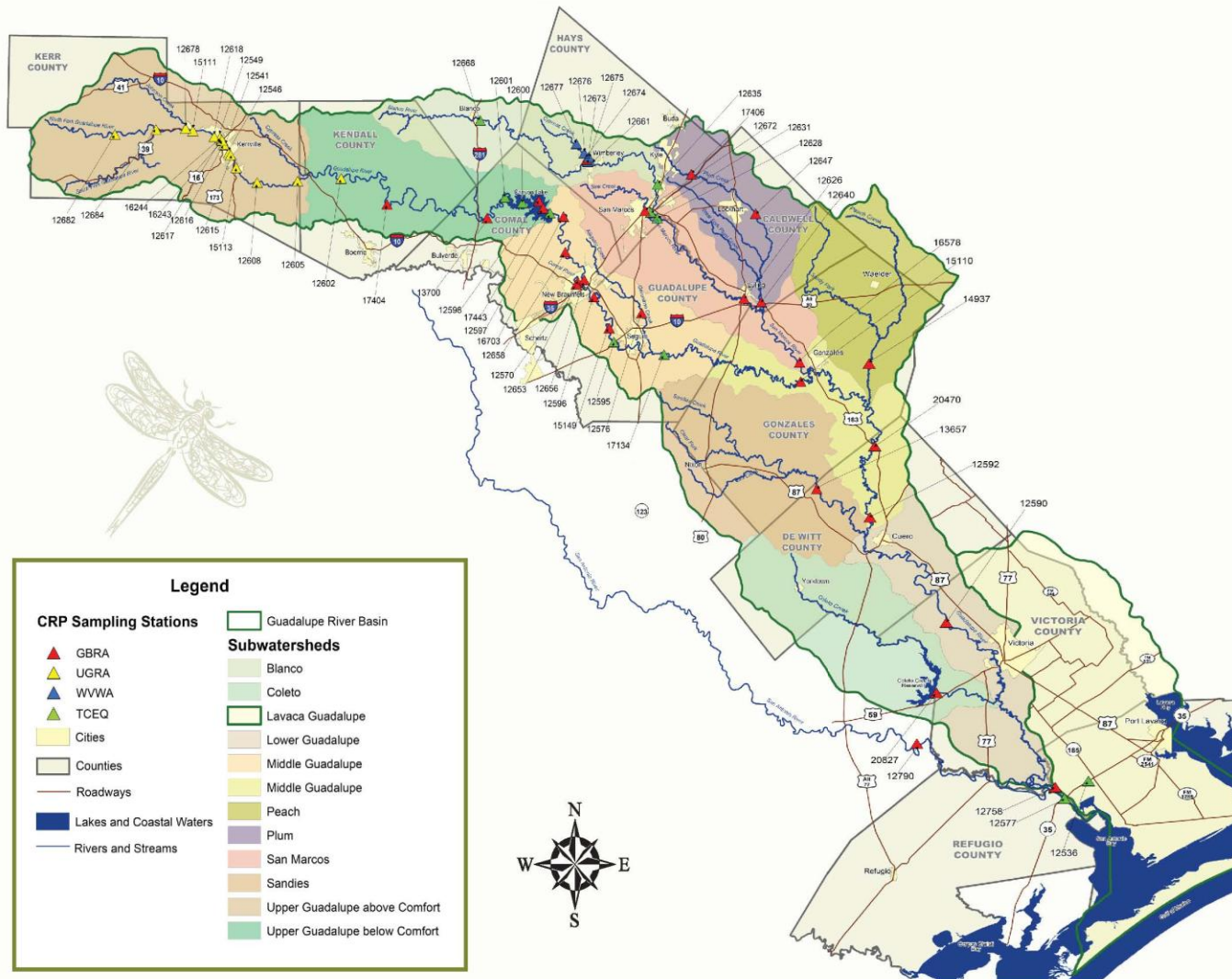


Water Quality Monitoring Program

- Collected under an approved Quality Assurance Project Plan
 - Trained personnel
 - Specified methods
 - TNI accredited laboratories
 - Quality control objectives
 - Review and verified data
 - Data to SWQMIS
 - Used for assessment of streams



Guadalupe River Basin



Water Quality Monitoring

Water Quality Monitoring:

19 sites - Monthly (GBRA)

8 sites - Quarterly (GBRA)

11 sites - Quarterly (UGRA)

2 sites Biological/Habitat/24hr DO-2x/yr

1 site Metals in Water - 1/yr

8 sites - Quarterly; 1-24-hr DO(WVWA)

Monitoring Data

Stream assessments – Texas Water Quality Inventory

Table 3. 2012 Texas Water Quality Inventory and 303(d) List (Guadalupe River Basin)
(assessed using data collected in 12/1/2003 through 11/30/2010)

Segment Number	Water Body	Impairment	Concern
1801	Guadalupe River Tidal		Depressed Dissolved Oxygen; Nitrate-Nitrogen
1802	Guadalupe River below the San Antonio River		Nitrate-Nitrogen
1803	Guadalupe River below the San Marcos River		Bacteria
1803A	Elm Creek	Depressed Dissolved Oxygen	
1803B	Sandies Creek	Depressed Dissolved Oxygen; Impaired Macroinvertebrate and Fish Communities; Bacteria	Impaired Habitat
1803C	Peach Creek	Depressed Dissolved Oxygen; Bacteria;	Chlorophyll a
1804A	Geronimo Creek	Bacteria	Nitrate-Nitrogen
1805	Canyon Lake	Mercury in Edible Fish Tissue	
1806	Guadalupe River above Canyon Reservoir	Bacteria	Impaired Habitat
1806D	Quinlan Creek	Bacteria	
1806E	Town Creek	Bacteria	Depressed Dissolved Oxygen
1810	Plum Creek	Bacteria	Depressed Dissolved Oxygen; Impaired Habitat ; Nitrate-Nitrogen; Orthophosphorus; Total Phosphorus
1811A	Dry Comal Creek	Bacteria	
1813	Upper Blanco River	Depressed Dissolved Oxygen	
1814	Upper San Marcos River	Total Dissolved Solids	
1815	Cypress Creek		Depressed Dissolved Oxygen; Impaired Habitat ; Impaired Fish and Macroinvertebrate Communities

Bold text indicates additions as of 2012 assessment.

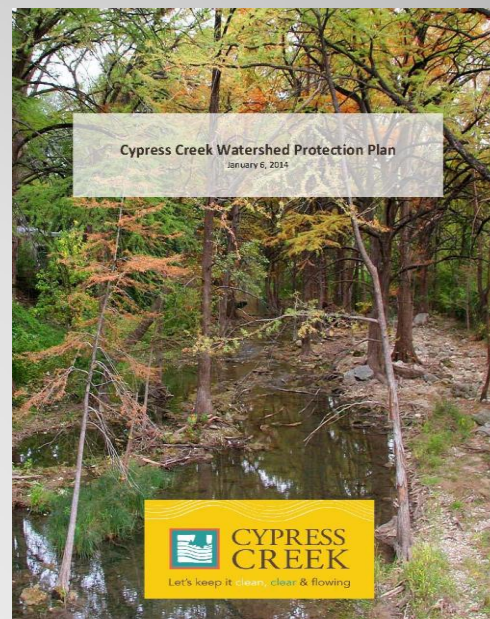
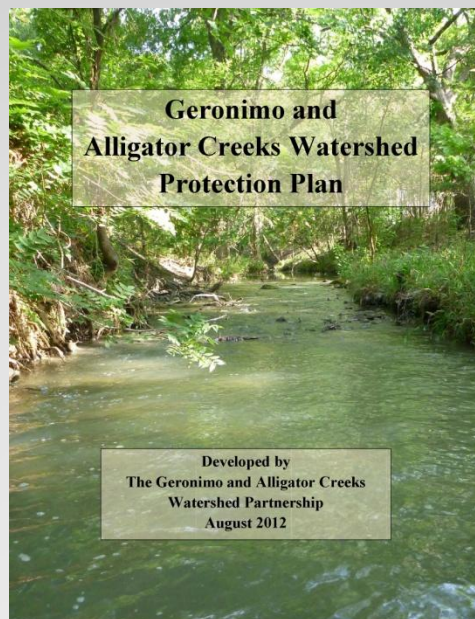
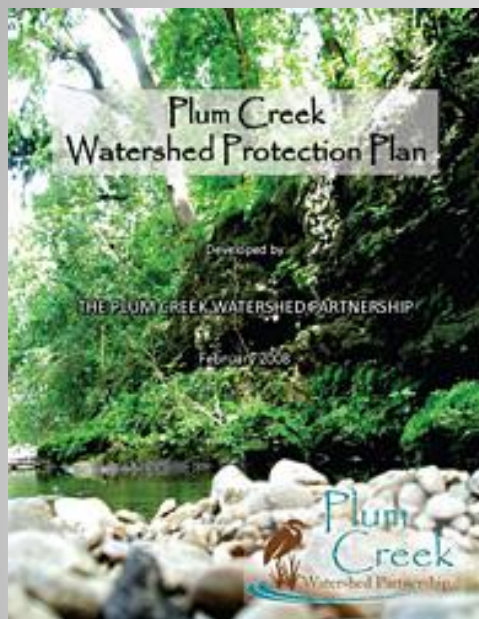
Monitoring Data

Special studies – Stakeholder concerns



Monitoring Data

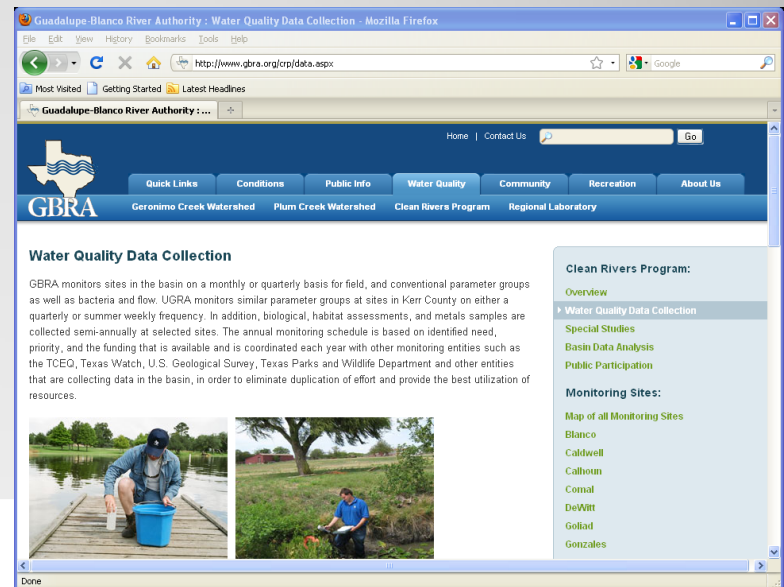
Watershed protection plans and implementation – WPPs and TMDLs



Data Reporting

Monthly-quarterly data submittals
to TCEQ's SWQMIS

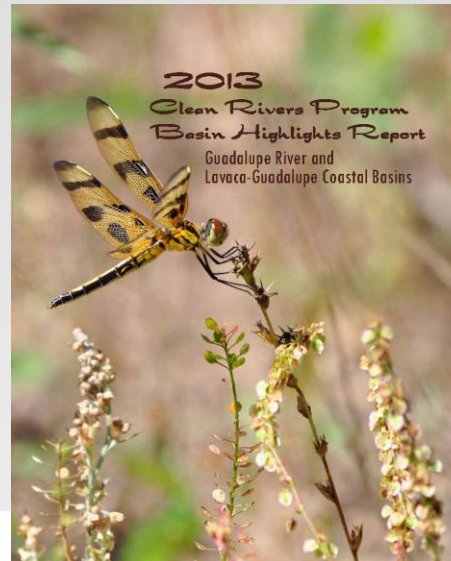
Posting on GBRA website



Data Reporting

Basin Highlights Report -report of activities

Basin Summary Report – every five years



Stakeholder Input

Annual meeting

Concerns about water quality

Direct program or special studies