

# **Basin Highlights Report Segment Impairments & Concerns**

**Guadalupe River Basin  
2015**

# Issues and Concerns

- Category 5 – water body does not meet applicable water quality standards for one or more designated uses
  - 5a – a TMDL or WPP is underway, scheduled or will be scheduled
  - 5b – a review of water quality standards will be conducted
  - 5c – Additional data and info will be collected
  - Example – Sandies Creek
  
- Category 4 – Standard is not supported but does not require a Total Maximum Daily Load (TMDL)
  - 4a – TMDL has been completed and approved by EPA
  - 4b – Activities being conducted that will result in improved water quality
  - Example – Plum Creek

# Issues and Concerns

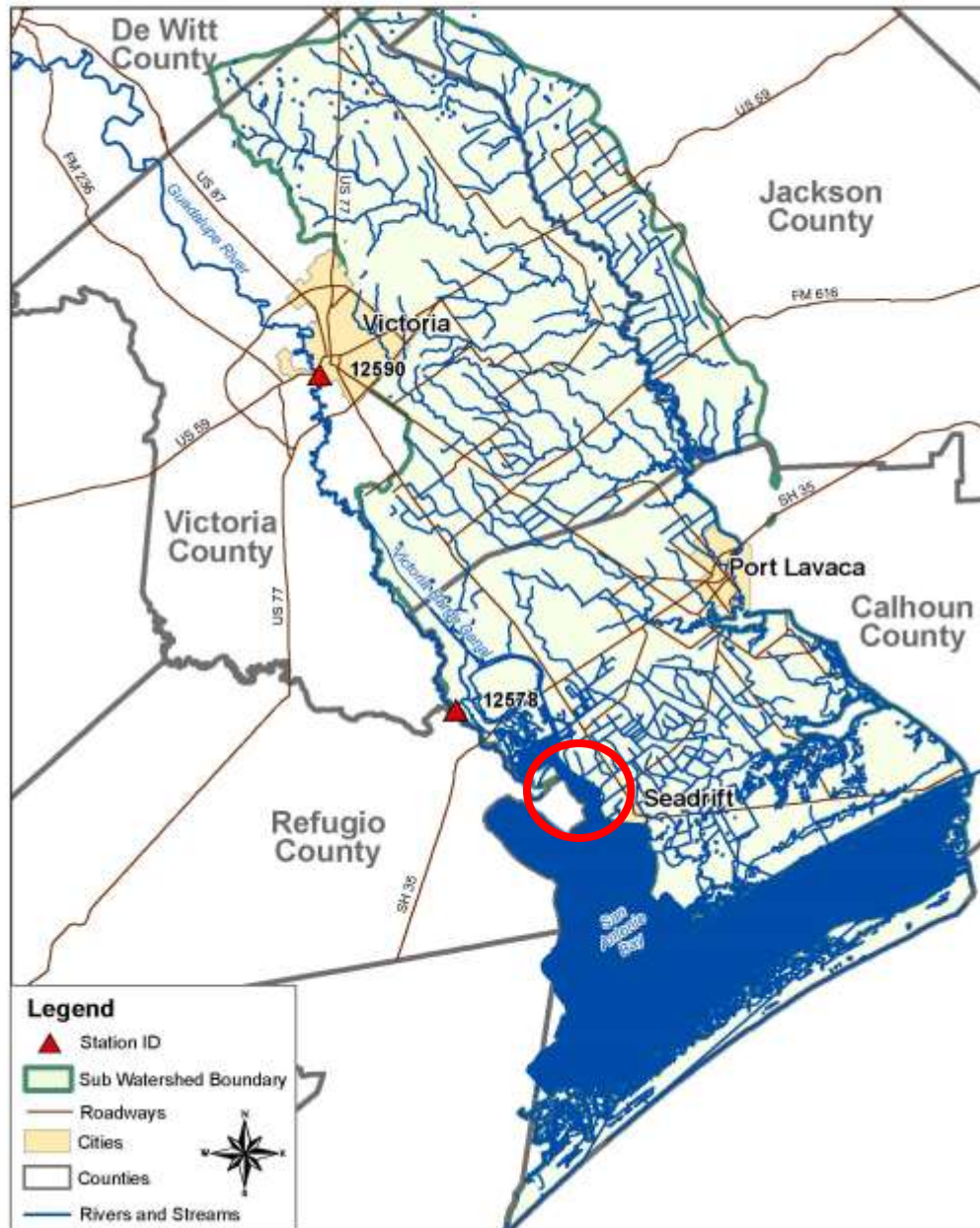
- Concerns
  - Exceeds screening concentration (CS)
    - Example: Plum Creek
      - Nitrate Nitrogen, Ammonia Nitrogen, Total Phosphorus
  - Has Use Concern (CN)
    - Example: Guadalupe River below San Marcos River
      - Bacteria Geometric Mean- 141 organisms/100 mL

# Priority Water Bodies

- Guadalupe River Tidal (Segment 1801)
  - Depressed Dissolved Oxygen
  - Nitrate-Nitrogen
  - Listed with concerns in 2002



# Guadalupe-Lavaca Coastal Basin

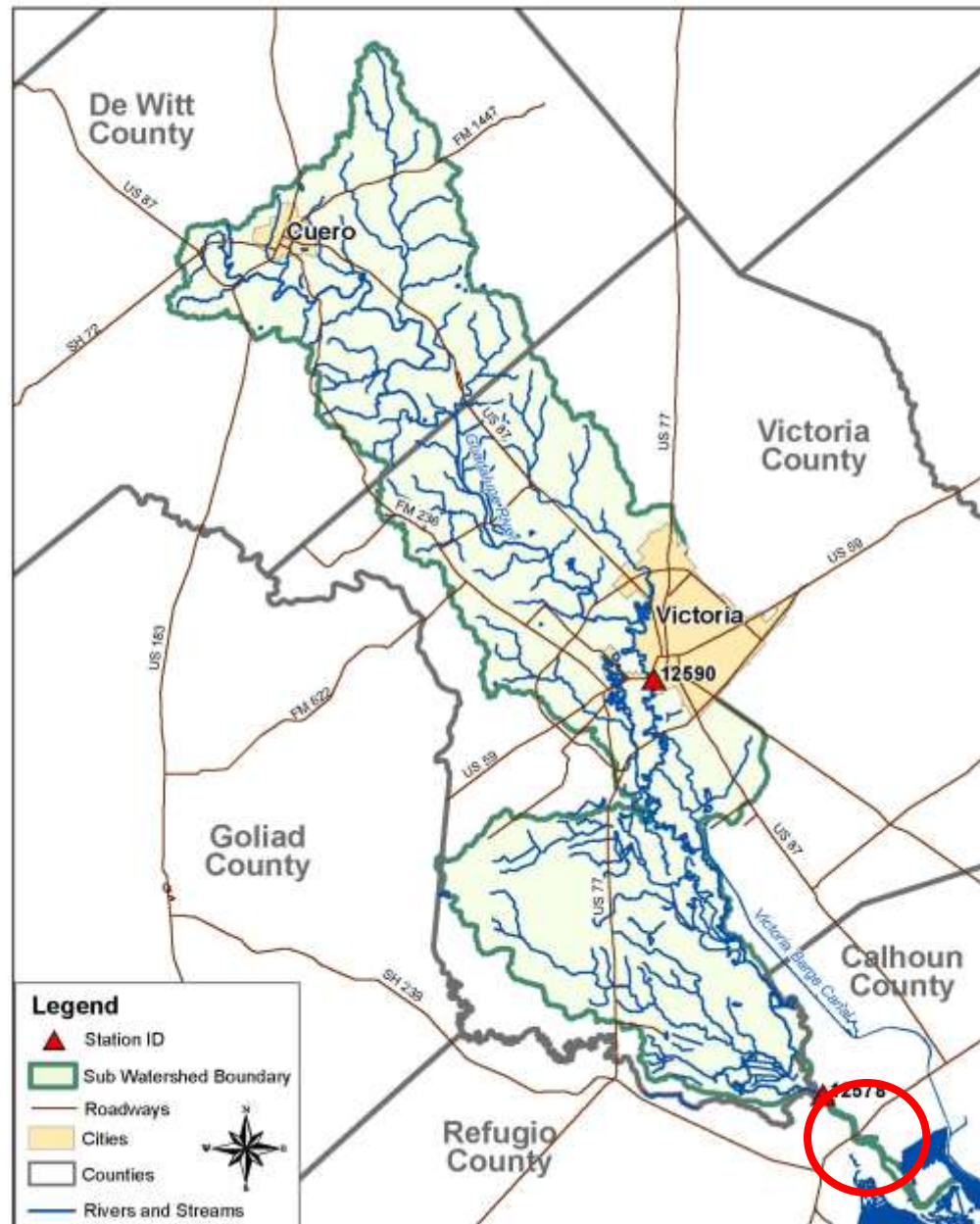


# Priority Water Bodies

- Guadalupe River Below San Antonio River (Segment 1802)
  - Nitrate Nitrogen
  - Listed with concerns in 2002



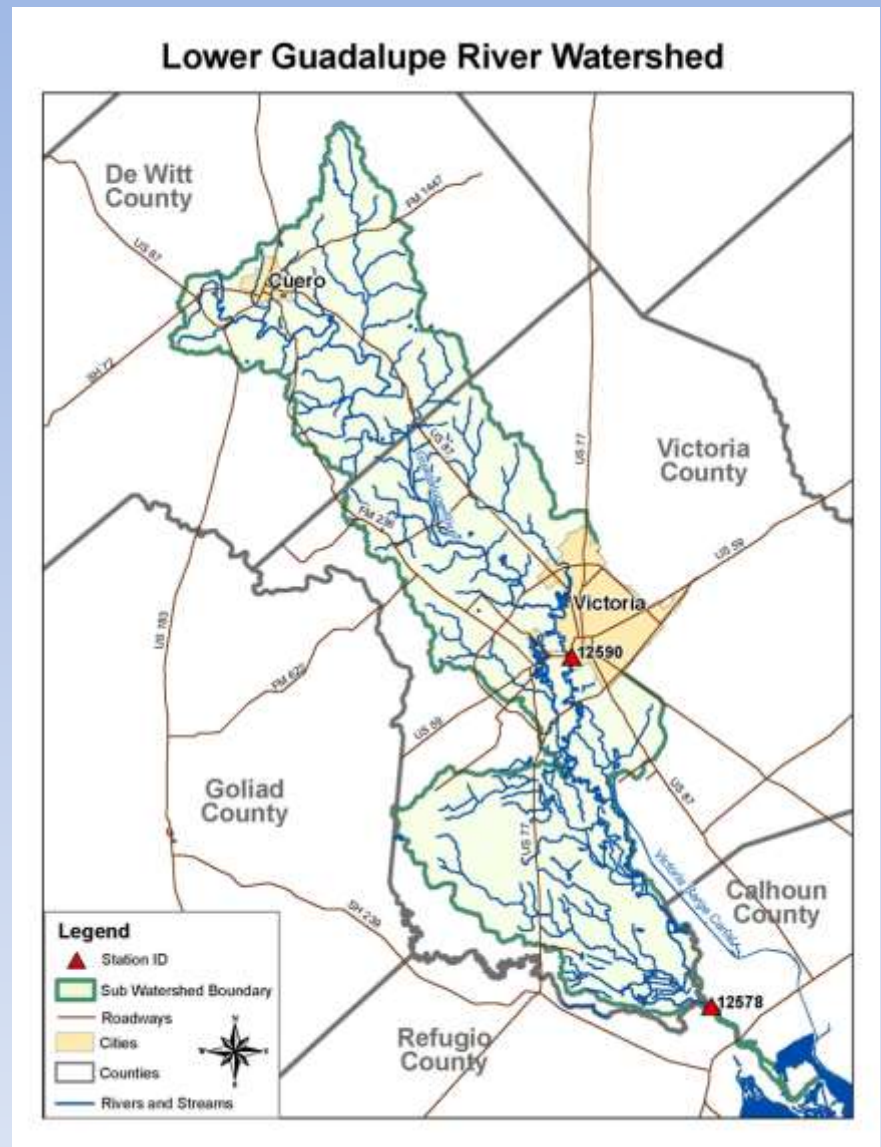
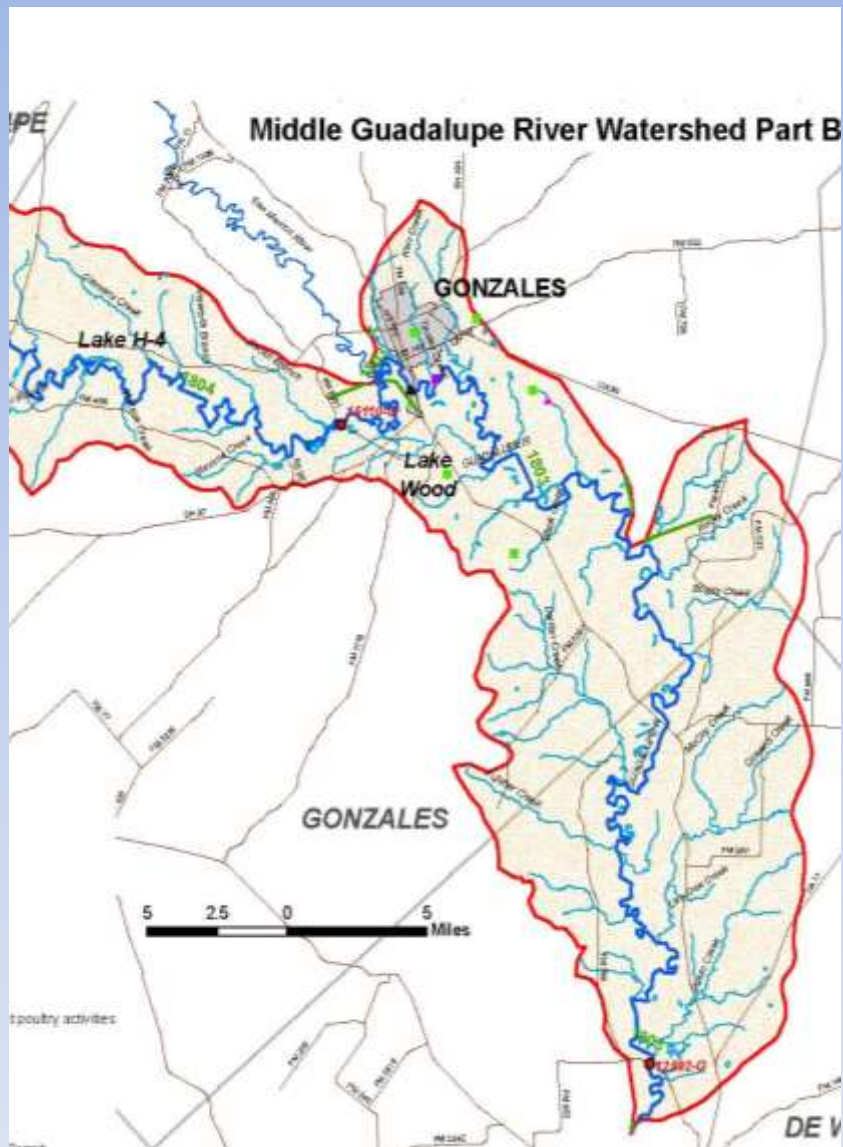
# Lower Guadalupe River Watershed



# Priority Water Bodies

- Guadalupe River Below San Marcos River (Segment 1803)
  - 1803\_04 – 25 mi from confluence with Coleta Creek upstream to confluence with Sandies Creek
  - Bacteria
  - Removed listing in 2014
  - 1803\_01 –Lower 25 Miles
  - Nitrate Nitrogen
  - Listed as Concern in 2014



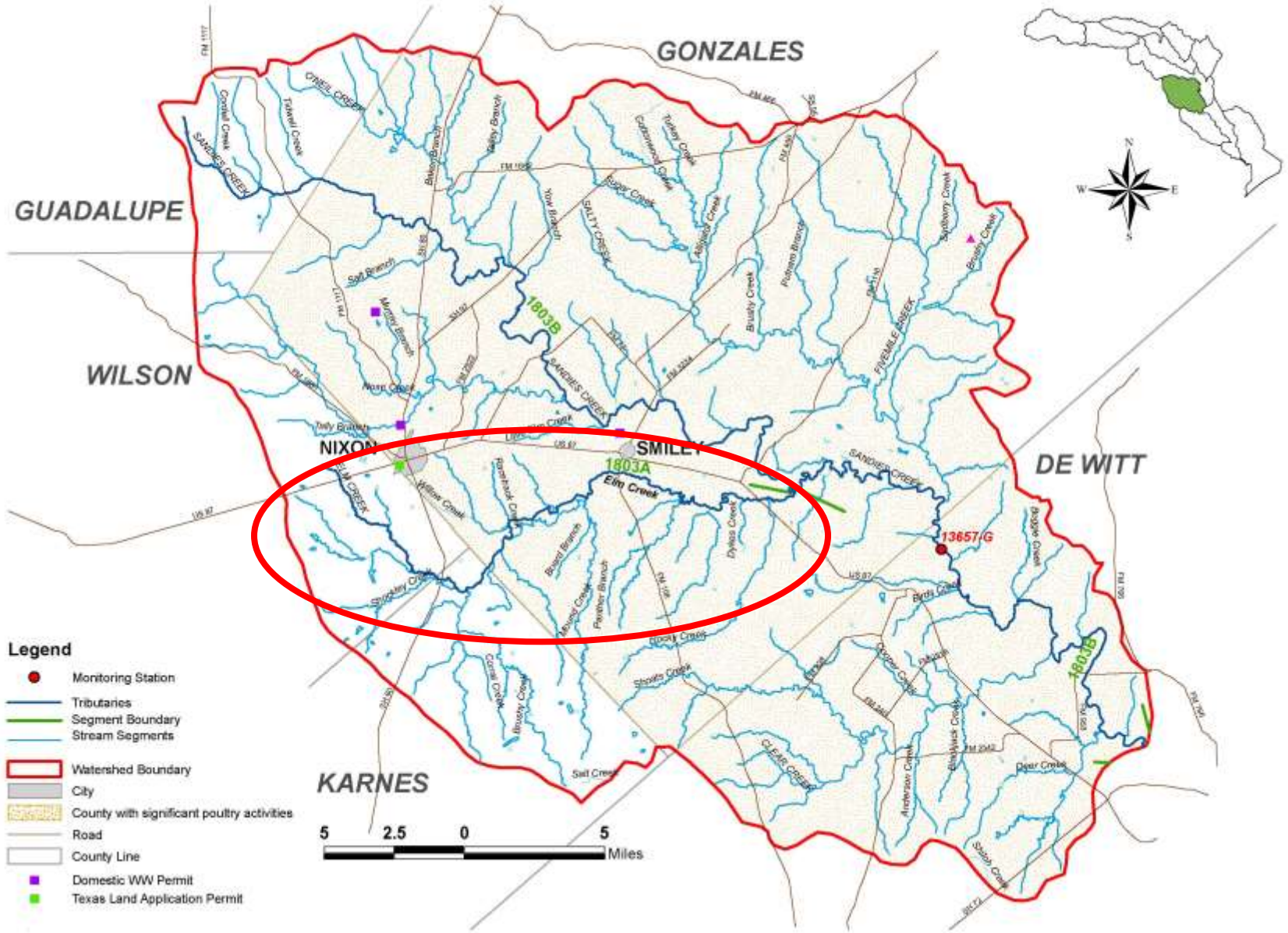


# Priority Water Bodies

- Elm Creek (Segment No. 1803A)
  - Depressed Dissolved Oxygen;
  - Chlorophyll-a
  - Listed in 1999
  - Category 5b



# Sandies Creek Watershed

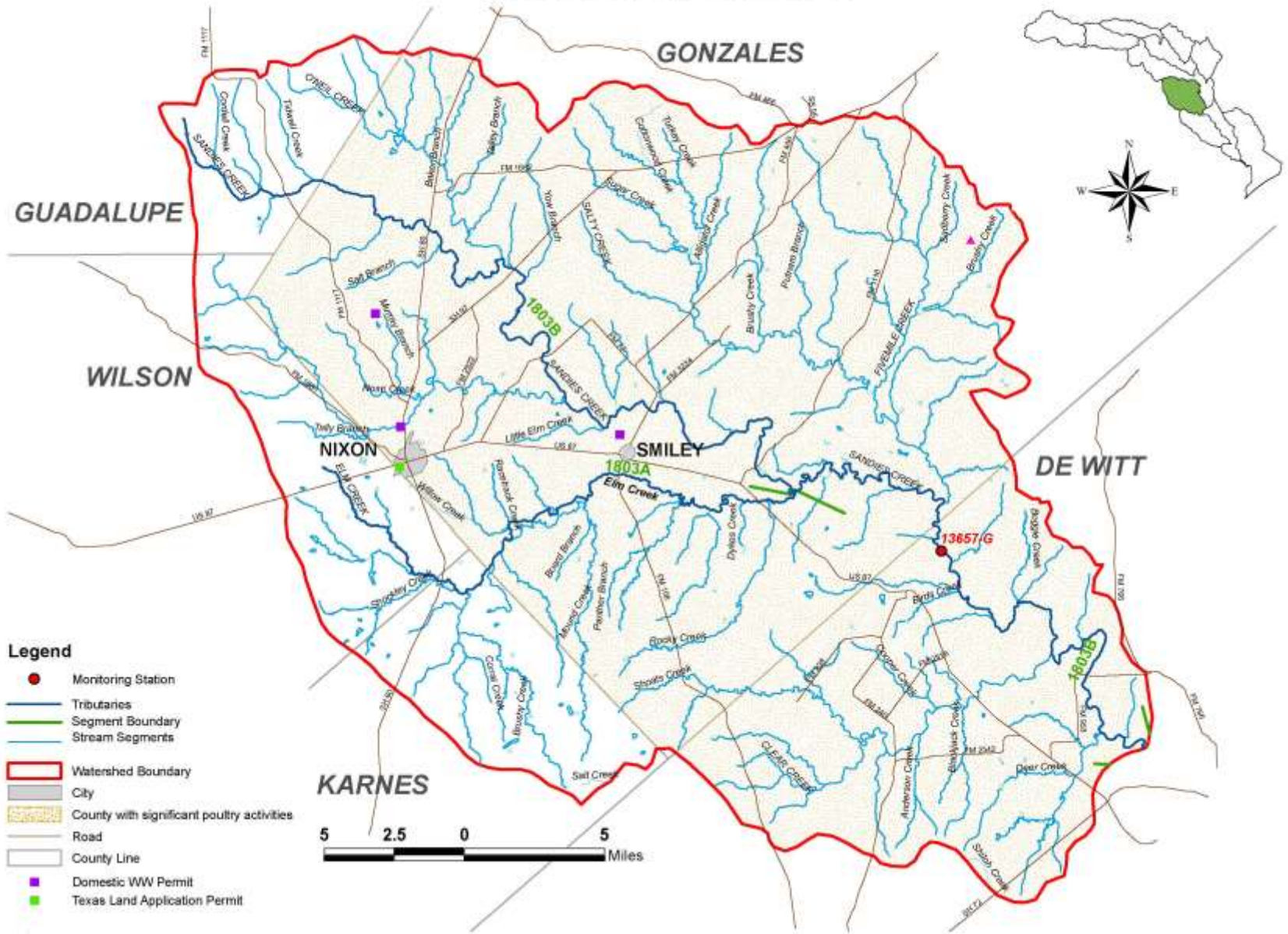


# Priority Water Bodies

- Sandies Creek (Segment 1803A)
  - Depressed Dissolved Oxygen
  - Impaired Biological Habitat and Communities
    - Habitat, fish and macroinvertebrates
  - Bacteria
  - Chlorophyll-a
  - Listed in 1999
  - Categories 5b



## Sandies Creek Watershed

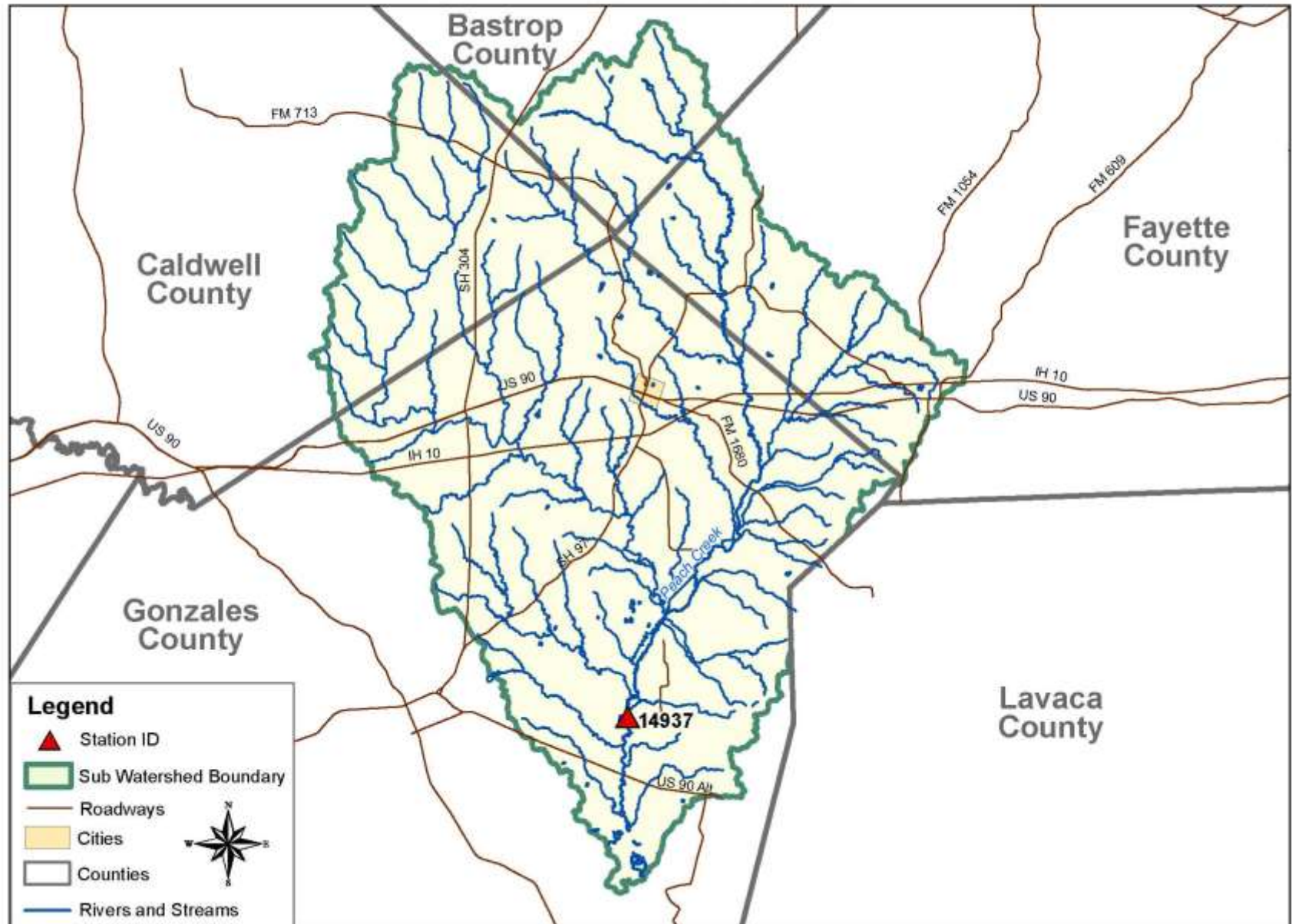


# Priority Water Bodies

- Peach Creek (Segment No. 1803C)
  - Depressed Dissolved Oxygen
  - Bacteria
  - Chlorophyll-a
  - Total Phosphorus
  - Listed in 2002
  - Categories 5b and 5c
  - 1803F Denton Creek & 1803G Sandy Fork
  - Removed in 2014



# Peach Creek Watershed

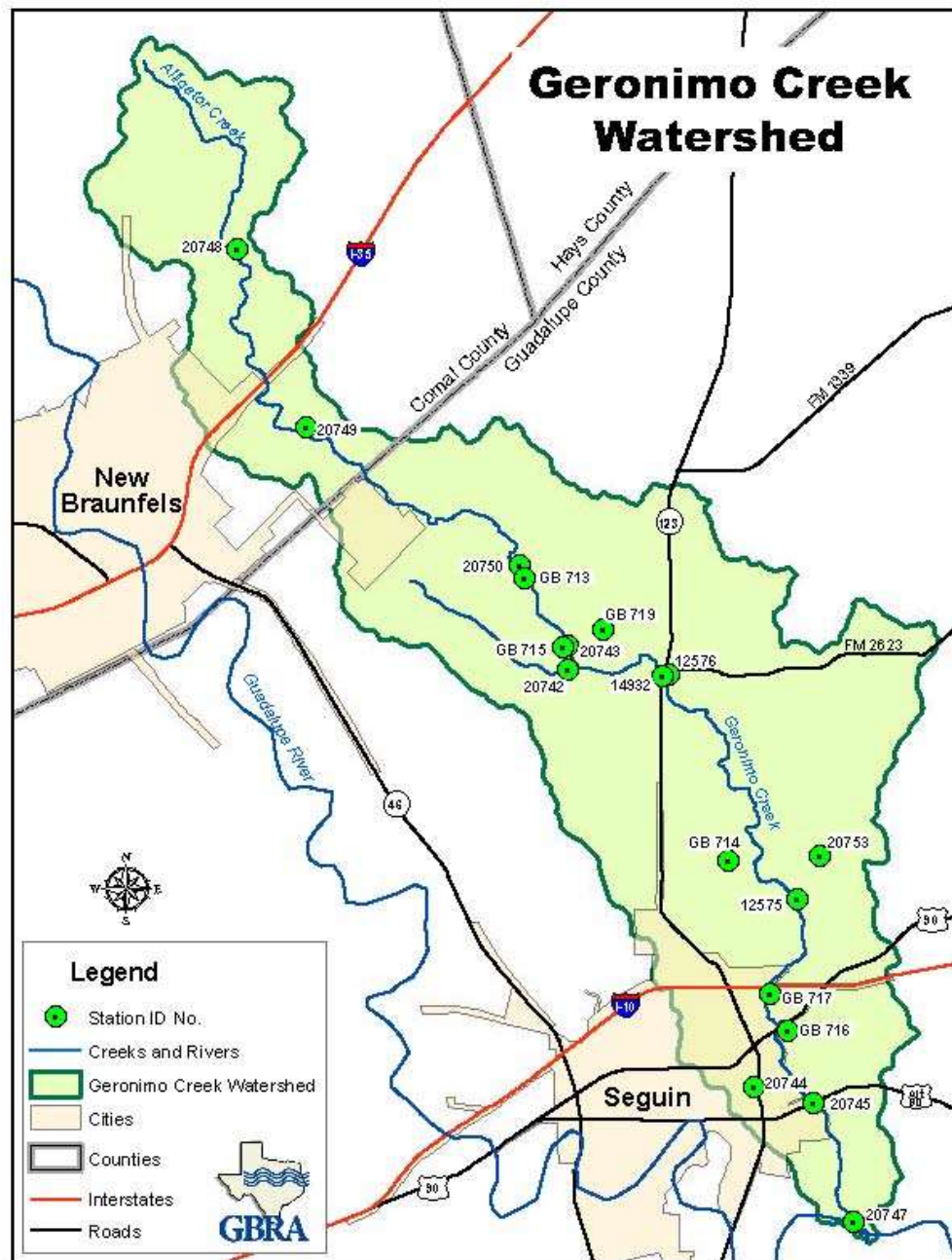


# Priority Water Bodies

- Geronimo Creek (Segment No. 1804A)
  - Nitrate Nitrogen
  - Bacteria
  - Listed in 2006
  - Category 5c



# Geronimo Creek Watershed

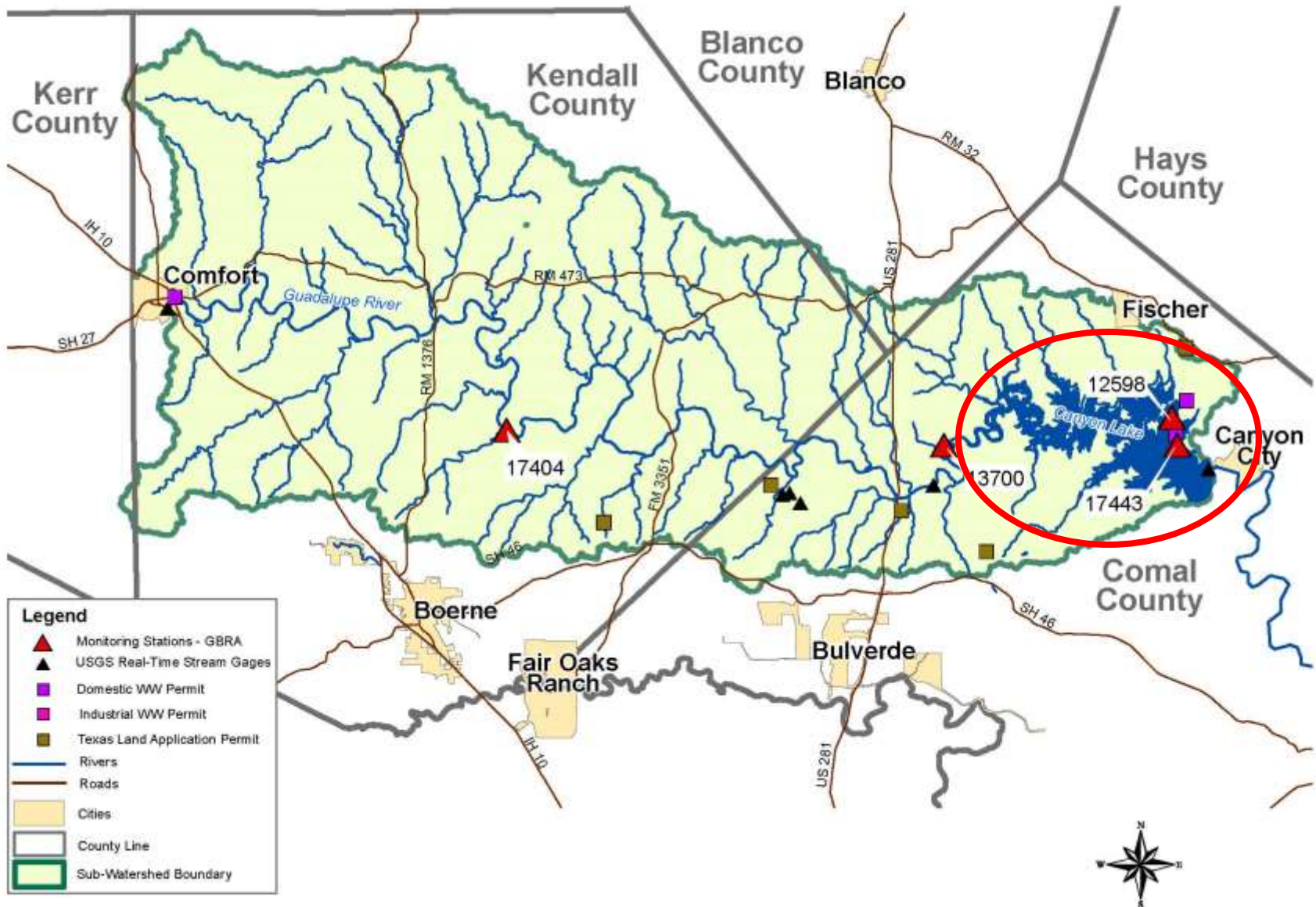


# Priority Water Bodies

- Canyon Lake (Segment 1805)
  - Mercury in Fish Tissue
  - Listed in 2006
  - Category 5c
  - 1805\_01 – Cove near Jacob's Creek
  - Ammonia Nitrogen Listed in 2014



# Guadalupe River Below Comfort

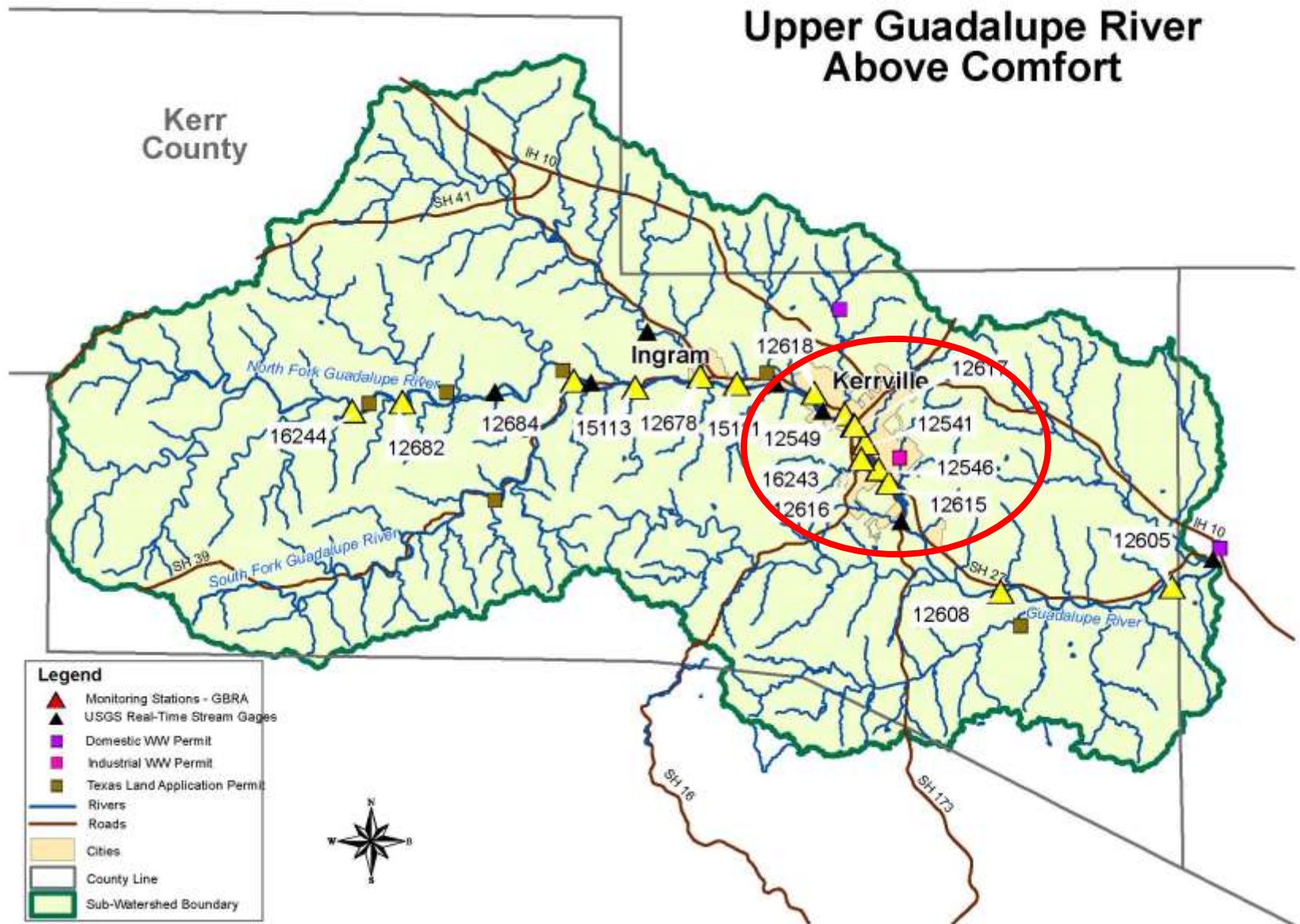


# Priority Water Bodies

- Guadalupe River Above Canyon Reservoir (Segment 1806)
  - 1806\_06 & 1806\_08 Portions of the segment from confluence with Third Creek to confluence of Town Creek; Honey Creek to confluence of Joshua Creek - Kerr Co.
  - Bacteria listed in 1999
  - Moved to Category 4a
  - Removed in 2014 Draft
  - Impaired Habitat & Macrobenchthics in 2014



## Upper Guadalupe River Above Comfort



# Priority Water Bodies

- Quinlan Creek (Segment 1806D)
  - Bacteria
  - Listed in 2010
  - Category 5a



# Upper Guadalupe River Above Comfort



# Priority Water Bodies

- Town Creek (Segment 1806E)
  - Bacteria
  - Listed in 2010
  - Category 5a



# Upper Guadalupe River Above Comfort

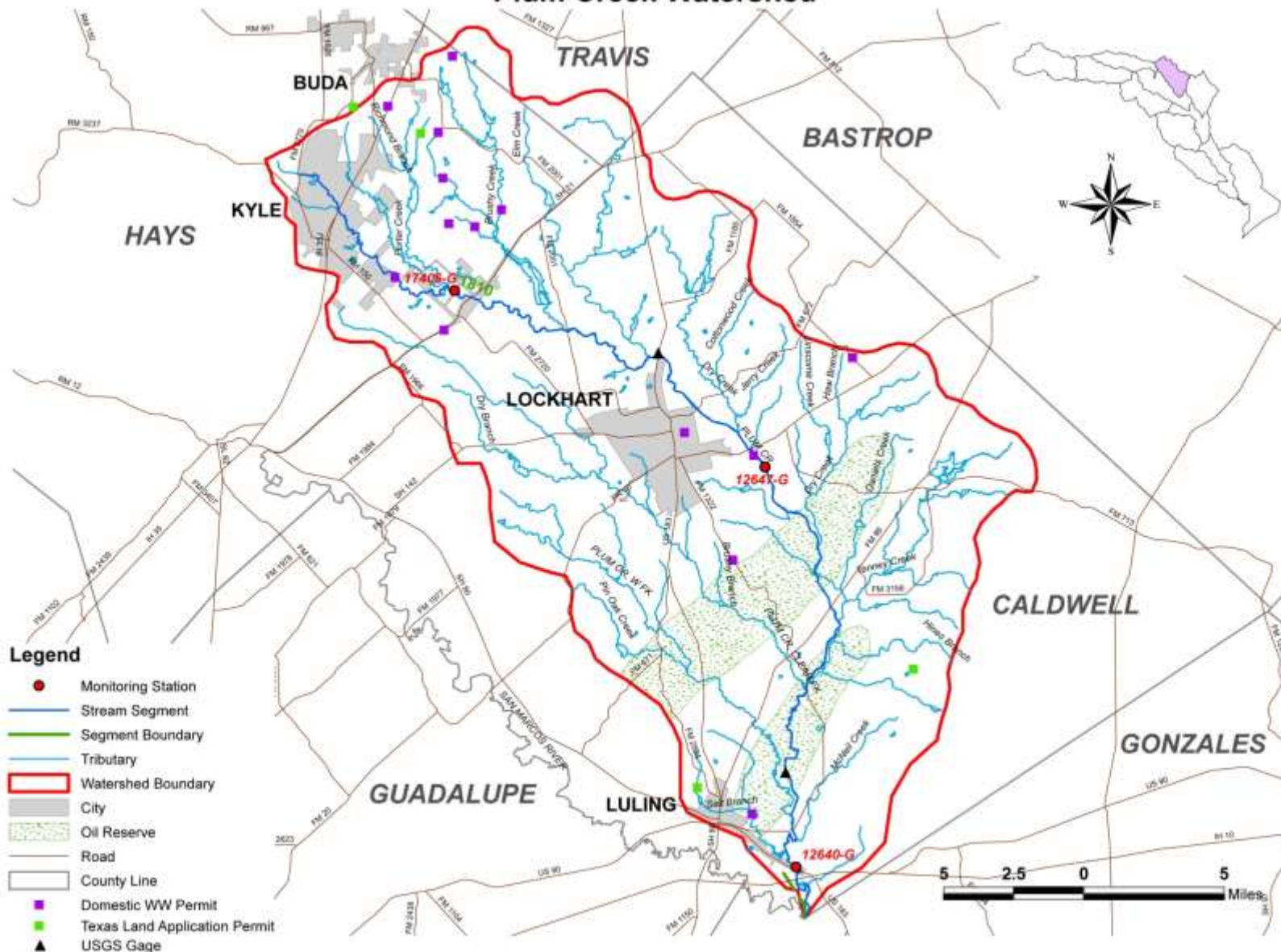


# Priority Water Bodies

- Plum Creek (Segment 1810)
  - Bacteria
  - Nitrate-Nitrogen
  - Total Phosphorus
  - Depressed DO
  - Impaired Habitat & Macrobenchics
  - Listed in 2004
  - Category 4b



# Plum Creek Watershed

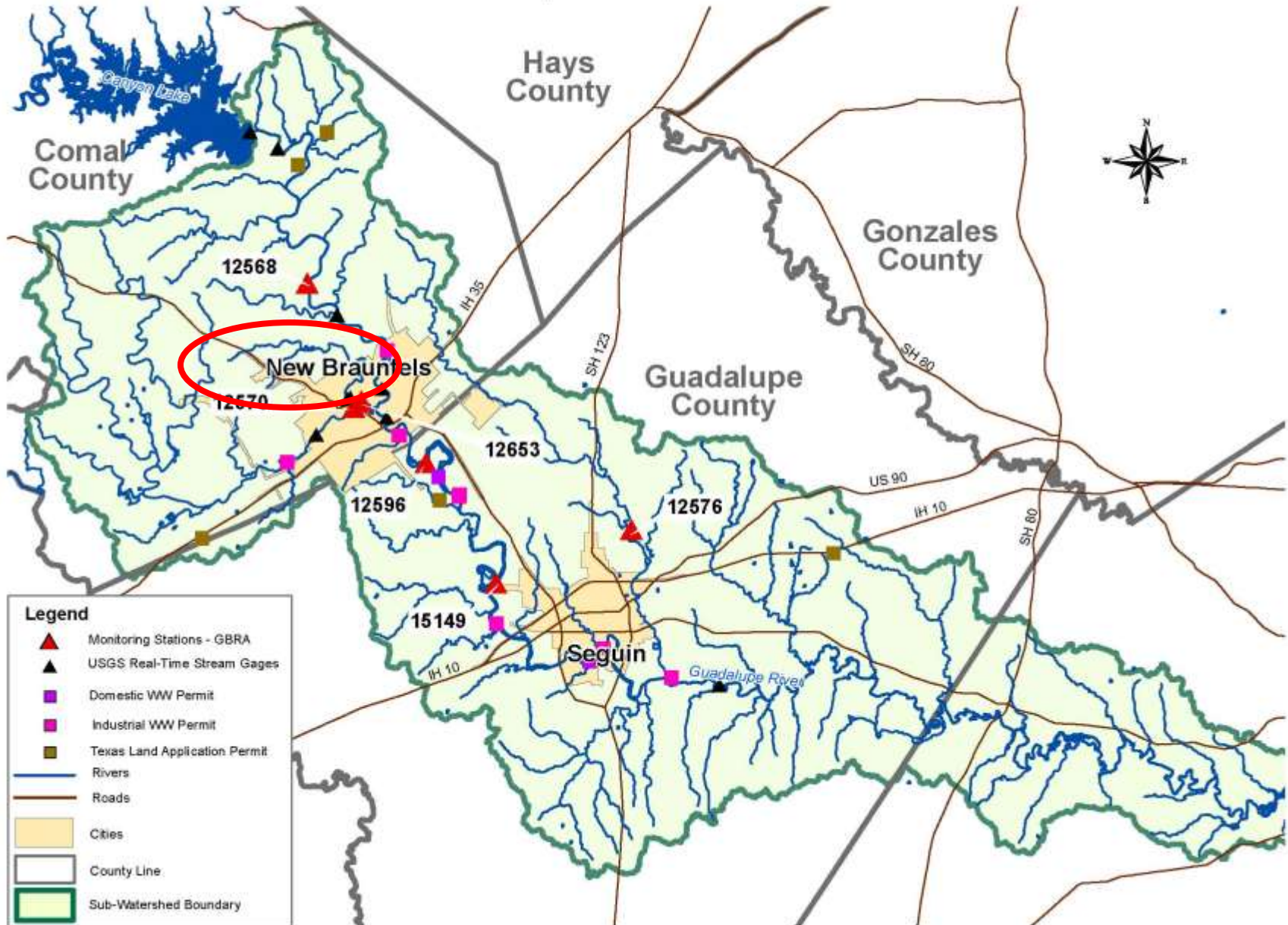


# Priority Water Bodies

- Comal River (Segment 1811)
  - Not listed
  - Sensitive Water Body



# Middle Guadalupe River Watershed Part A

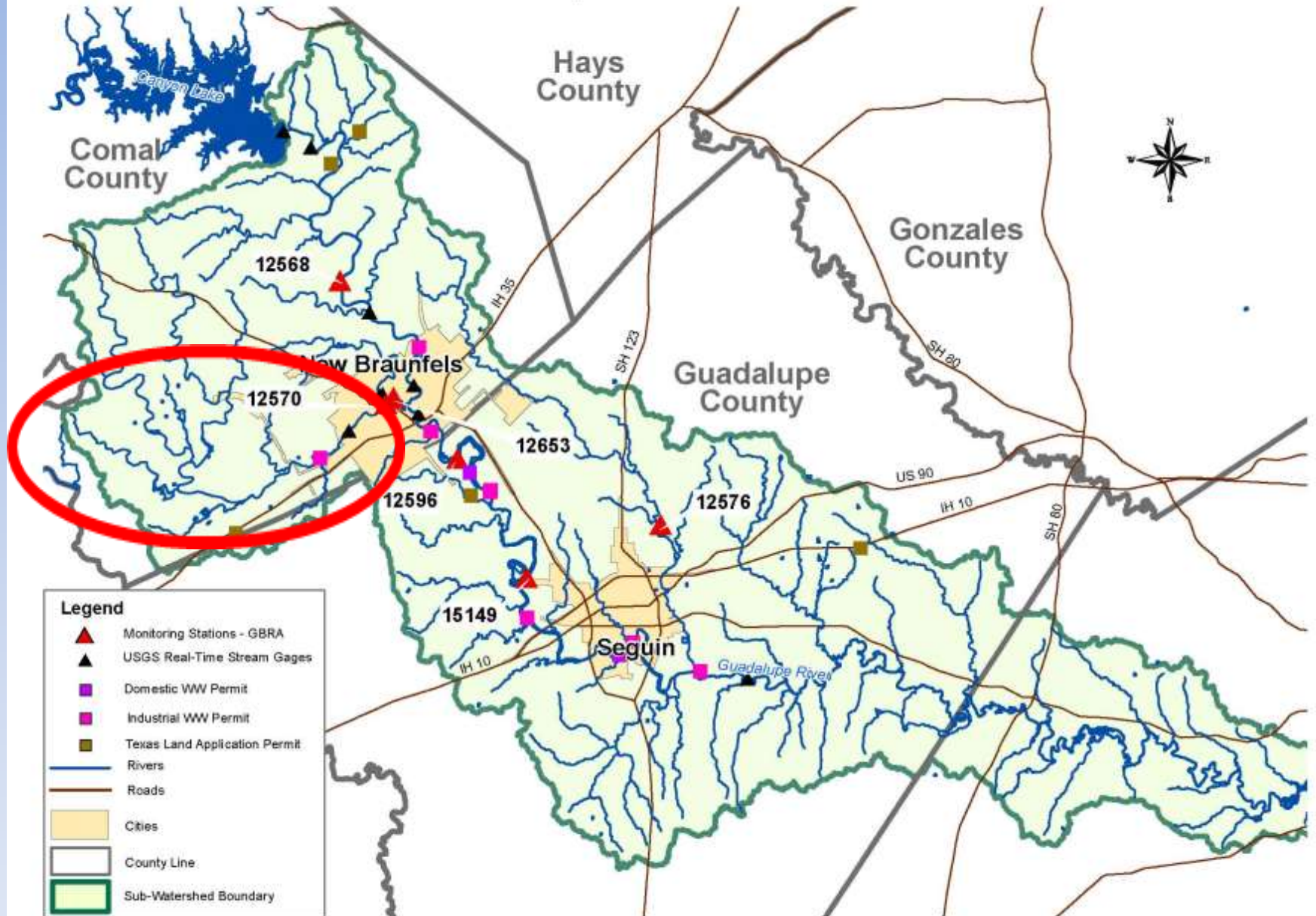


# Priority Water Bodies

- Dry Comal Creek (Segment 1811A)
  - Bacteria
  - Listed in 2010
  - Category 5b



# Middle Guadalupe River Watershed Part A

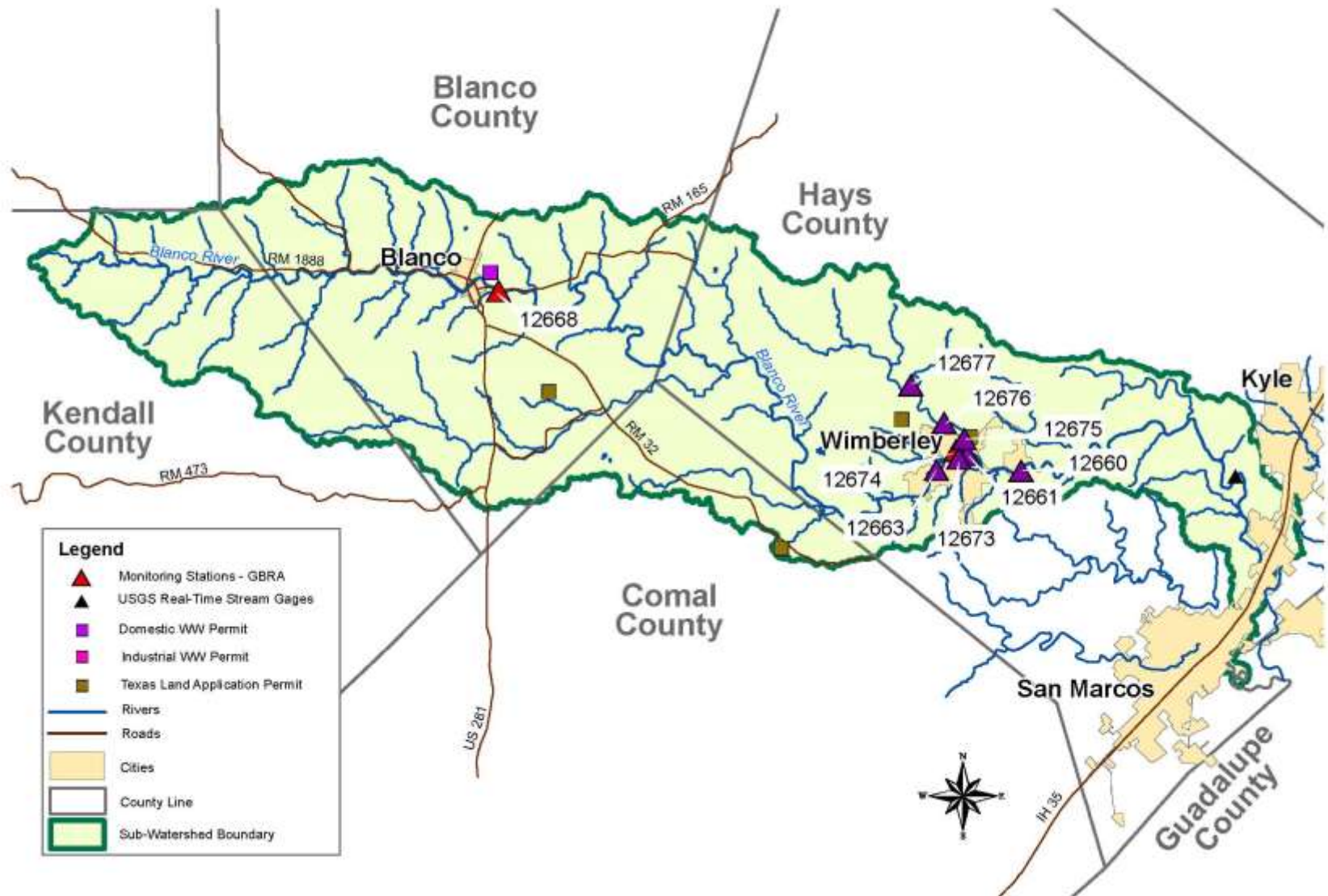


# Priority Water Bodies

- Upper Blanco River (Segment 1813)
  - Depressed DO
  - Listed in 2006
  - Removed from list in 2014 draft.



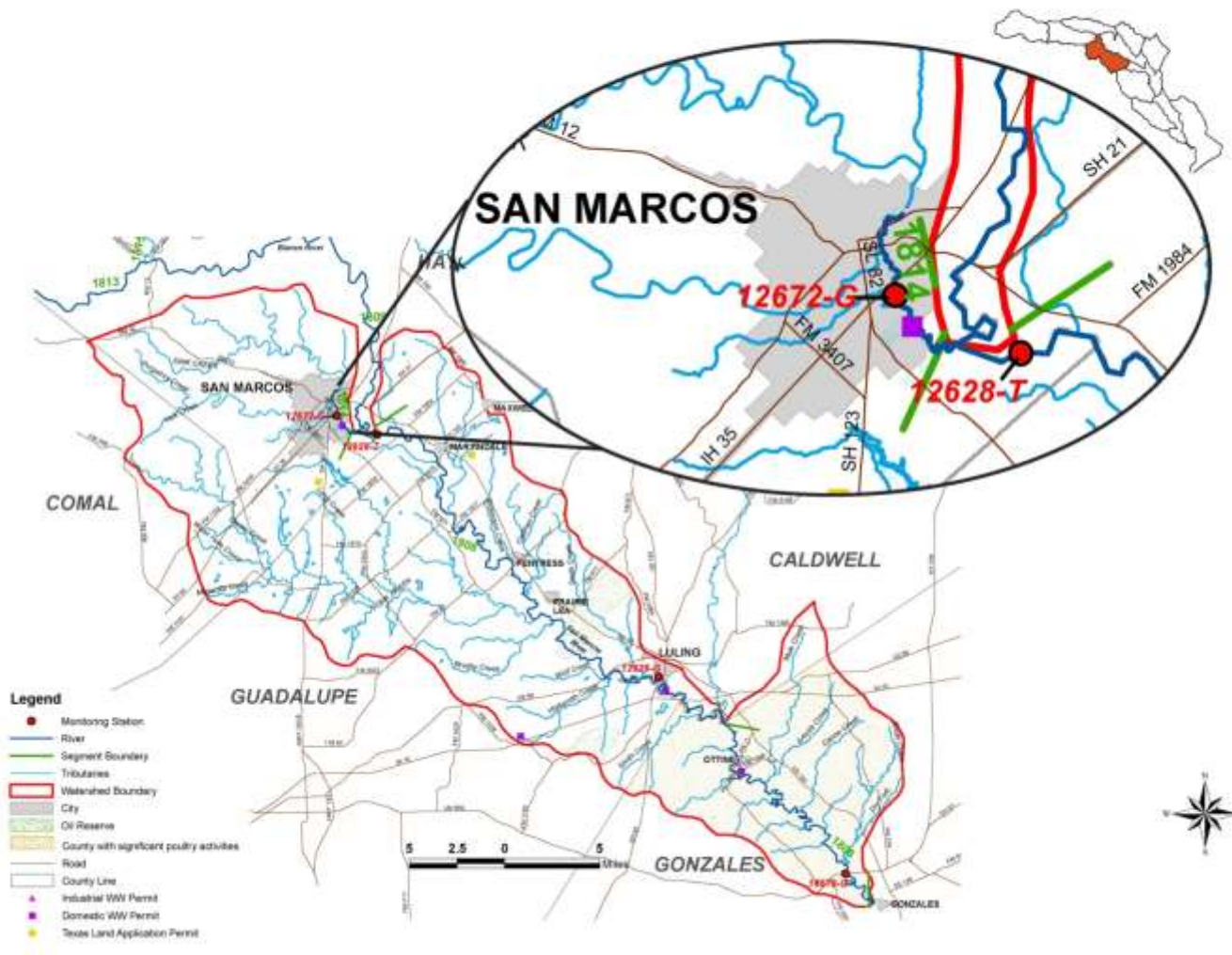
# Blanco River Watershed



# Priority Water Bodies

- Upper San Marcos River (Segment 1814)
  - Total Dissolved Solids
  - Listed in 2010
  - Category 5c
  - Removed from list in 2014 draft.





# Priority Water Bodies

- Cypress Creek (Segment 1815)
  - Depressed DO (Listed in 2010)
  - Impaired Habitat, Fish and Macroinvertebrate Community
  - Bacteria – stakeholder concern



# WVWA Sampling Sites

