

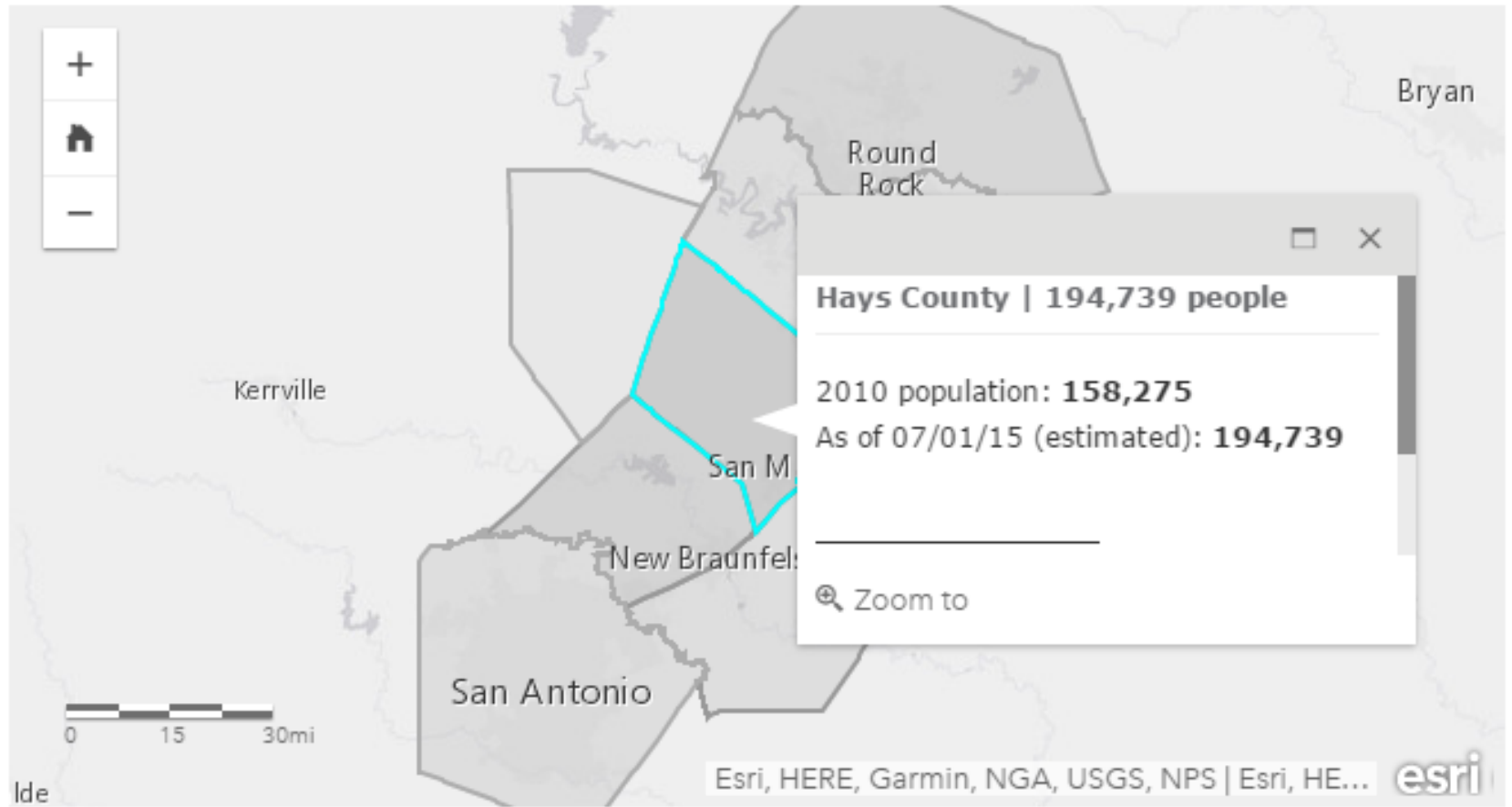


# PUTTING THE “LID” ON GROWTH IN THE PLUM CREEK WATERSHED



GUADALUPE RIVER BASIN  
2017 CLEAN RIVERS PROGRAM  
MARCH 23, 2017

# Hays County again ranked fastest-growing among surging Texas suburbs





# Drought among the worst in Texas in past 500 years

By Scott Huddleston, San Antonio Express-News Updated 8:31 am, Thursday, May 15, 2014



156





NEWS ▾

WEATHER ▾

TRAFFIC ▾

INVESTIGATIONS

SPORTS ▾

REPORT IT

MORE ▾

STU

## Report: 1,000 homes in Hays County destroyed or damaged by flooding

Associated Press, KXAN

Published: June 22, 2015, 3:07 pm | Updated: June 22, 2015, 3:31 pm

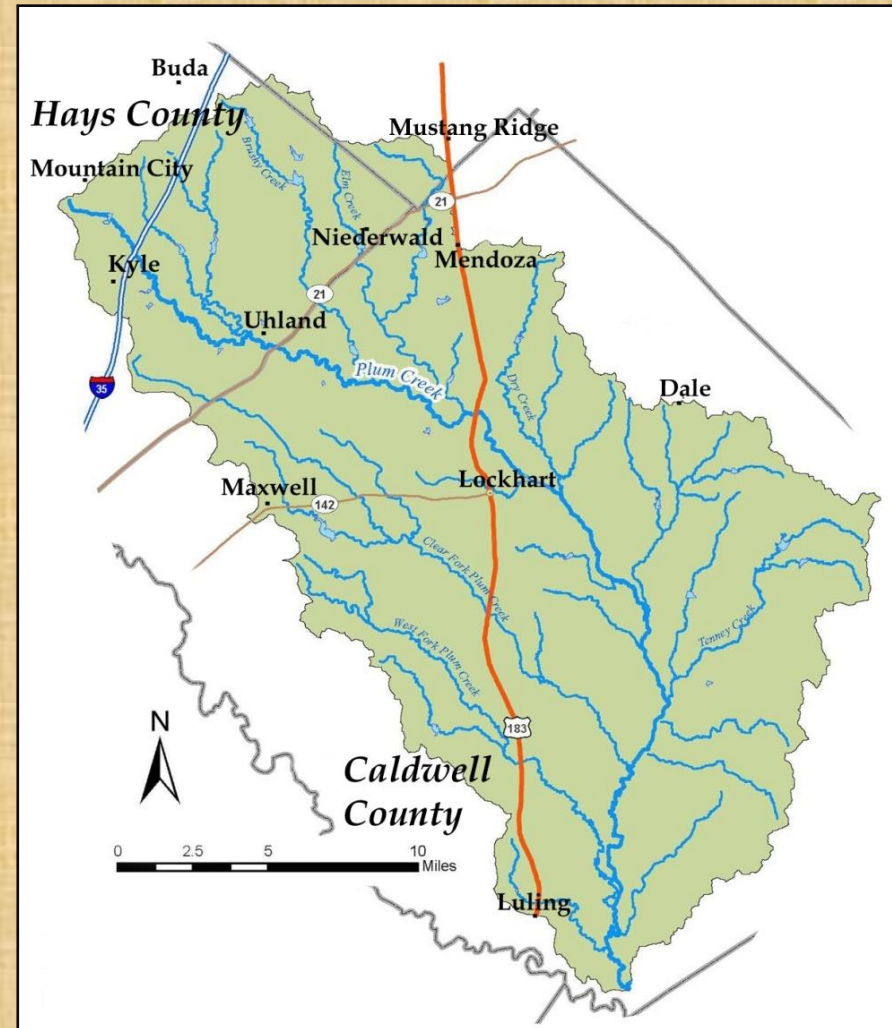


“Search crews continue to scour the banks of the Blanco River for the bodies of two children who were swept away in floodwaters over the holiday weekend. The bodies of nine others were found earlier.”



# The Plum Creek Watershed

- 397 square mile drainage
- Tributary to the San Marcos River
- Plum Creek was placed on the 2004 Texas 303(d) list for exceeding the primary contact recreation water quality standard for bacteria (*E. coli* < 126 cfu). To date, all 3 segments remain impaired.
- Delisted in 2010 TCEQ Integrated Report: Reclassified from 5c to 4b
- 2014 TCEQ Integrated Report concerns: DO, Habitat, Nitrate, Orthophosphorus, Total P



# Compared *E. coli* Geomean (organisms/100mL) for 3 Plum Creek CRP Routine Sampling Sites

	7-year Geomean	2-year Geomean	Last Sample – Dec. 2016
<b>Plum Creek at Plum Creek Road (Upper)</b>	<b>484</b>	<b>524</b>	<b>440</b>
<b>Plum Creek at Old McMahon Road (Middle)</b>	<b>298</b>	<b>345</b>	<b>150</b>
<b>Plum Creek at CR 135 (Lower)</b>	<b>197</b>	<b>280</b>	<b>310</b>



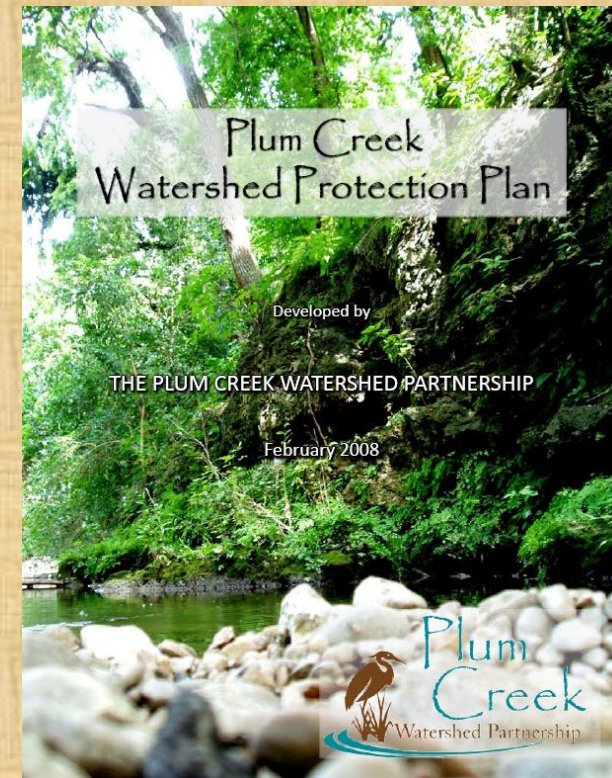
# THE PLUM CREEK WATERSHED PARTNERSHIP

*est. 2006*



“The *Partnership* works with citizens, businesses and officials in the watershed to restore the health of Plum Creek, recognizing that success in improving and protecting water resources depends on the people who live and work there.”

--Plum Creek Watershed Protection Plan, 2008

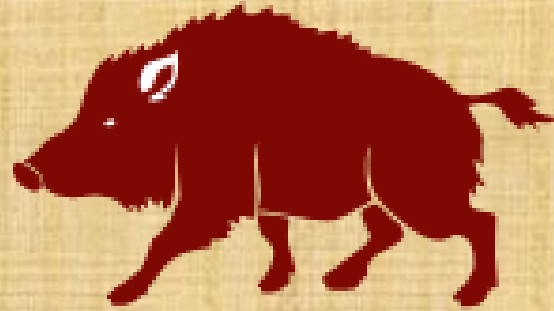




# What's on tap for 2017...

- ☐ **2016 Plum Creek Watershed Protection Plan Update**
- ☐ **Completion of Bacterial Source Tracking Study**
- ☐ **Completion of GBRA Isotope Study**
- ☐ **Three Low Impact Development projects (Kyle, Lockhart, Caldwell Co.)**
- ☐ **Local Farms Tour**
- ☐ **Luling Feral Hog Workshop**
- ☐ **Three Septic Workshops (conventional/aerobic)**
- ☐ **Two Riparian Management Workshops**
- ☐ **One Low Impact Development Workshop**
- ☐ **4 Community Collection Events / 3 Tire Collection Events**
- ☐ **Don't Mess With Texas Trash-Off – Lockhart (April 8)**
- ☐ **Kyle Earth Day Event (April 22)**
- ☐ **10<sup>th</sup> Annual Keep Lockhart Beautiful Cleanup and Environmental Fair**
- ☐ **Continued Landowner Assistance**
- ☐ **Implementation of three, TCEQ CWA grants to demonstrate LID**





# **Caldwell County**

## **FERAL HOG TASK FORCE**

[www.feralhogtaskforce.com](http://www.feralhogtaskforce.com)

**\*Bounty reinstated February 2017**  
**Tuesdays ONLY – 10am to 2pm**  
**405 E. Market Street, Lockhart**

**Questions: [ccfhtf@gmail.com](mailto:ccfhtf@gmail.com)**

# TCEQ 319 GRANTS FUND LID PROJECTS

## CALDWELL COUNTY JUSTICE CENTER

- ❑ TOTAL PROJECT COST = \$370,402
- ❑ RETROFIT OF EXISTING PARKING LOT
- ❑ CONSTRUCTION OF EMPLOYEE PARKING LOT
- ❑ RAINWATER HARVESTING
- ❑ LID EDUCATION AND DEMONSTRATION
- ❑ CONSTRUCTION TO BEGIN SPRING 2017



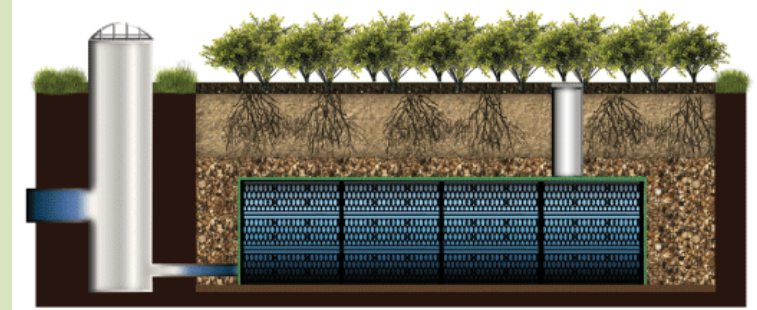
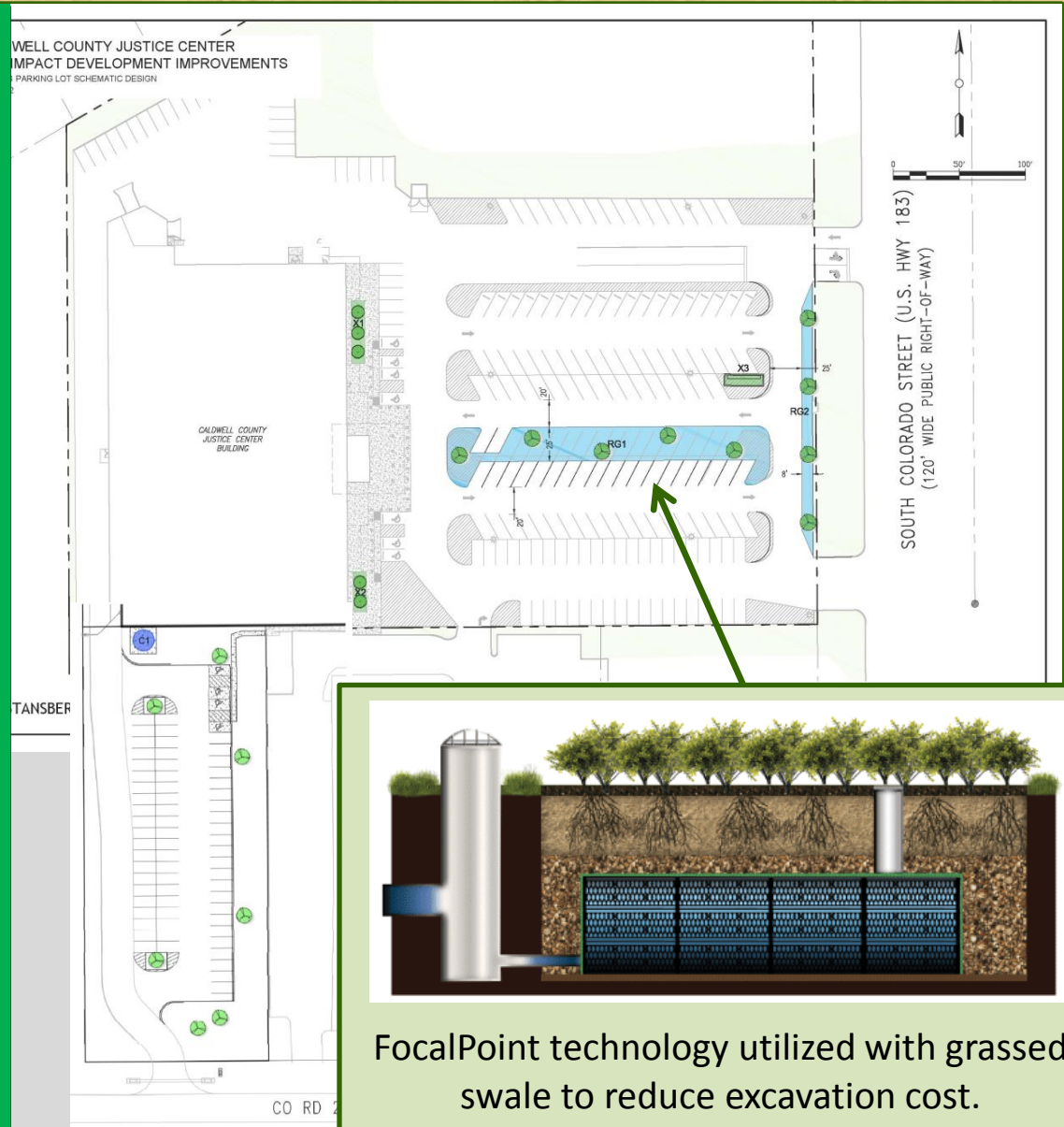


# TCEQ 319 GRANTS FUND LID PROJECTS

## CALDWELL COUNTY JUSTICE CENTER

- 10,000 SQ. FT. OF BIORETENTION
- TRADITIONAL RAINGARDEN
- GRASS SWALE W/ FOCAL POINT
- XERISCAPE\*
- RAINWATER HARVESTING
- 7,000+ SQ. FT. OF PERMEABLE PAVERS FOR NEW PARKING LOT
- NATIVE PLANTS\*
- PERMANENT SIGNAGE
- EDUCATIONAL MATERIALS
- 1 LID WORKSHOP / 2 SITE TOURS

\*MOU WITH LOCAL MASTER GARDENERS

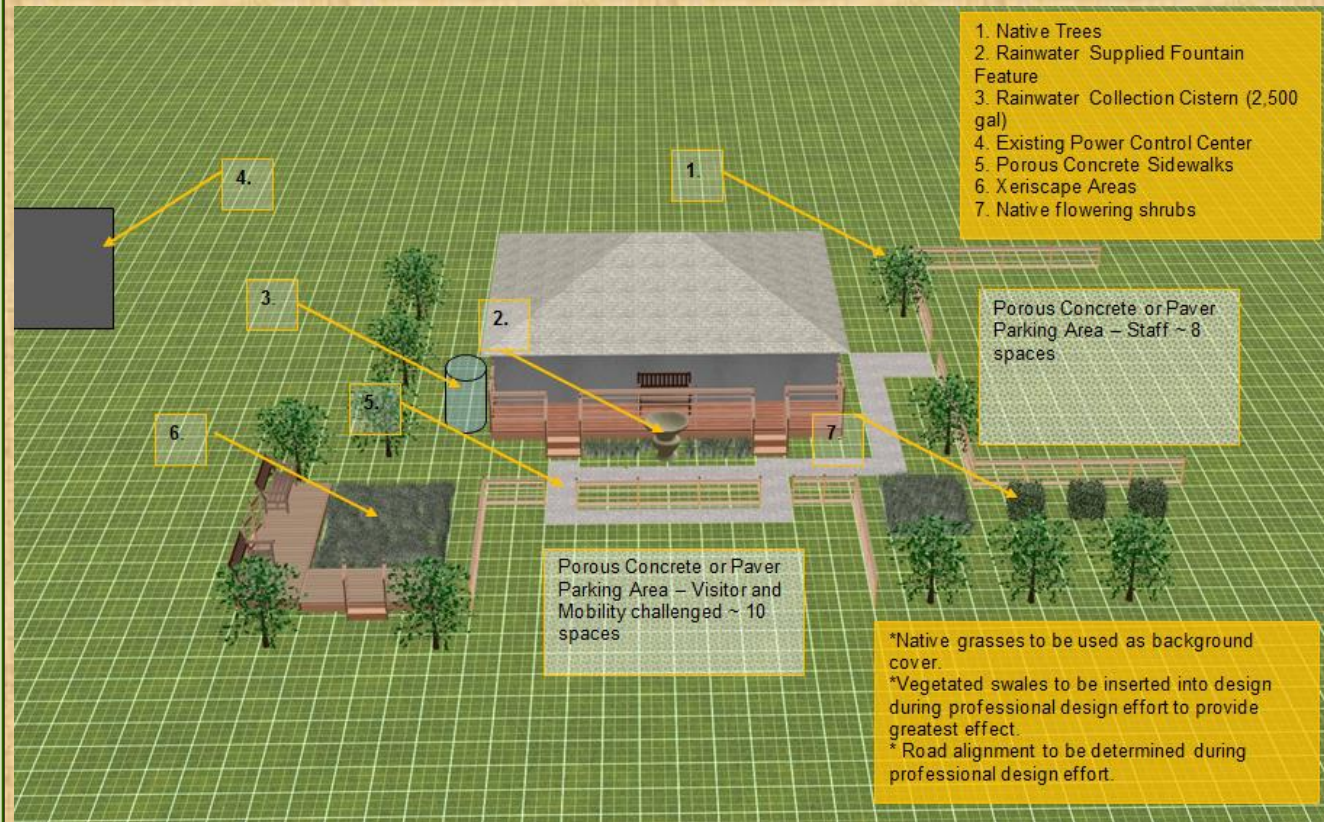


FocalPoint technology utilized with grassed swale to reduce excavation cost.

# TCEQ 319 GRANTS FUND LID PROJECTS

## City of Kyle WWTF Administrative Building

- Total Project Cost = \$220,359
- Rainwater Harvesting
- Porous Concrete
- Permeable Pavers
- Wet Ponds
- Grassed swales
- Raingardens
- Xeriscaping
- Outreach and Education



City of Kyle WWTF – Administrative Building





# Where to next?

- ☐ Meetings with city and county officials
- ☐ Meetings with developers
- ☐ Build public support
- ☐ LID ordinances at the city level
- ☐ LID incentives at the county level
- ☐ Other ideas???

# Next PCWP Steering Committee Meeting

**Thursday, May 11, 2017**

**Time and Location TBD**



# Thanks!



Nick Dornak,  
Plum Creek Watershed Coordinator  
[ndornak@plumcreekwatershed.org](mailto:ndornak@plumcreekwatershed.org)

405 E. Market Street  
Lockhart, TX 78644

(512)213-7389