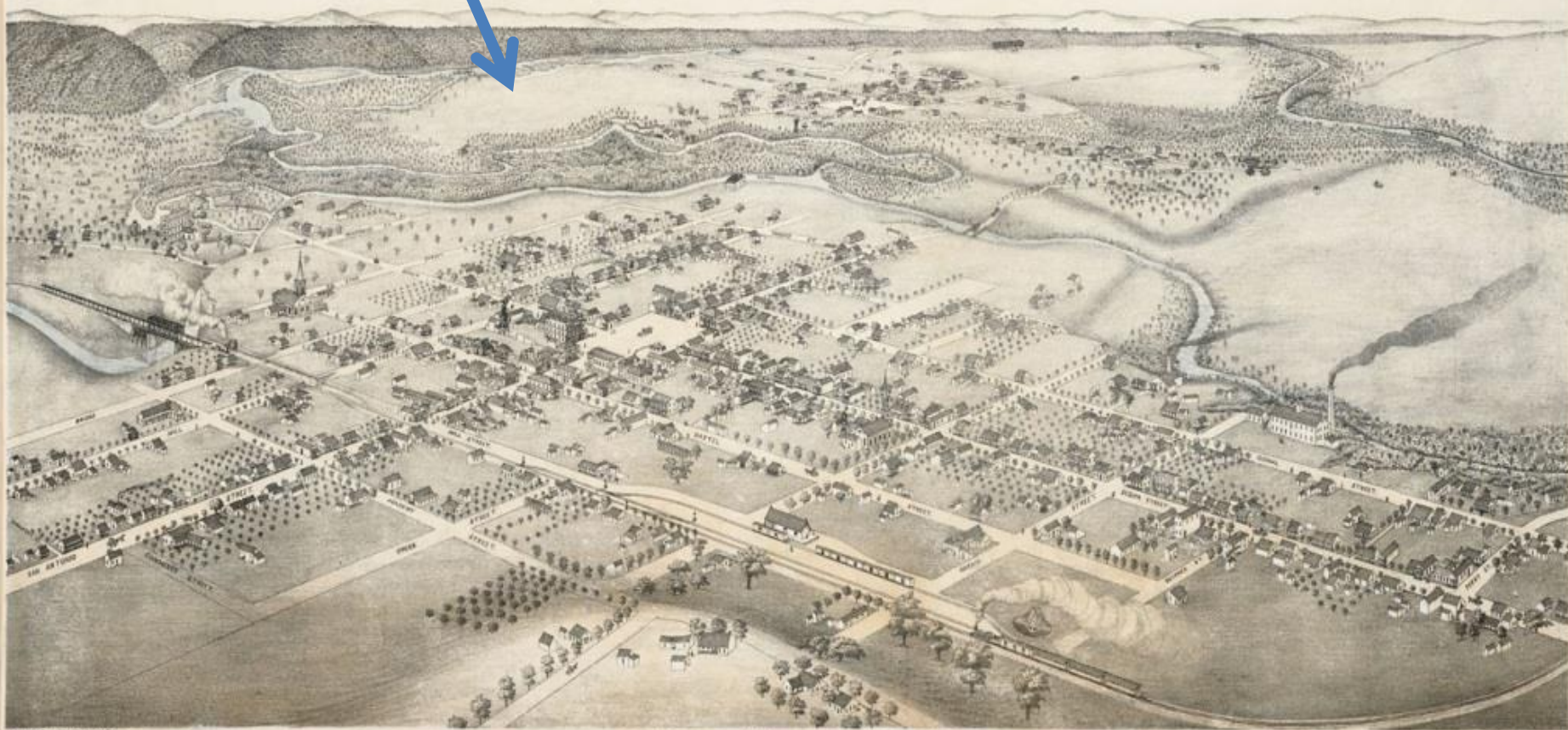




HEADWATERS™

AT THE COMAL



BIRDS EYE VIEW OF NEW BRAUNFELS

COMAL COUNTY TEXAS
1881

- 1. CITY HALL
- 2. CITY PRISON
- 3. HOSPITAL
- 4. LADY'S CHURCH
- 5. WINDMILL
- 6. HOSPITAL
- 7. POWER HOUSE
- 8. POWER HOUSE
- 9. POWER HOUSE

- 10. BRIDGE
- 11. BRIDGE
- 12. BRIDGE
- 13. BRIDGE
- 14. BRIDGE
- 15. BRIDGE
- 16. BRIDGE
- 17. BRIDGE
- 18. BRIDGE
- 19. BRIDGE

- 20. BRIDGE
- 21. BRIDGE
- 22. BRIDGE
- 23. BRIDGE
- 24. BRIDGE
- 25. BRIDGE
- 26. BRIDGE
- 27. BRIDGE
- 28. BRIDGE
- 29. BRIDGE

This project demonstrates New Braunfels Utilities' commitment to:

- Mission, Vision, and Values
- Stewardship of resources
- Best Management Practices
- Restoration & Preservation
- Partnership with the community



HEADWATERSTM

AT THE COMAL





HEADWATERSTM
AT THE COMAL

Phase I focus on:

- **Restoration:**
 - Remove asphalt
 - Debris removal
 - Invasive species removal
 - biodiversity planting and seeding
 - Creation of habitat pools and ripples
- **Storm Water Mitigation:**
 - Check dams
 - Creating Berms & Bioswales
 - Bank Stabilization



HEADWATERSTM

AT THE COMAL

Phase I Completed in Fall 2017

- Restoration of natural environment
- Water Quality Improvements



HEADWATERSTM
AT THE COMAL





HEADWATERSTM
AT THE COMAL



HEADWATERSTM
AT THE COMAL



HEADWATERSTM
AT THE COMAL



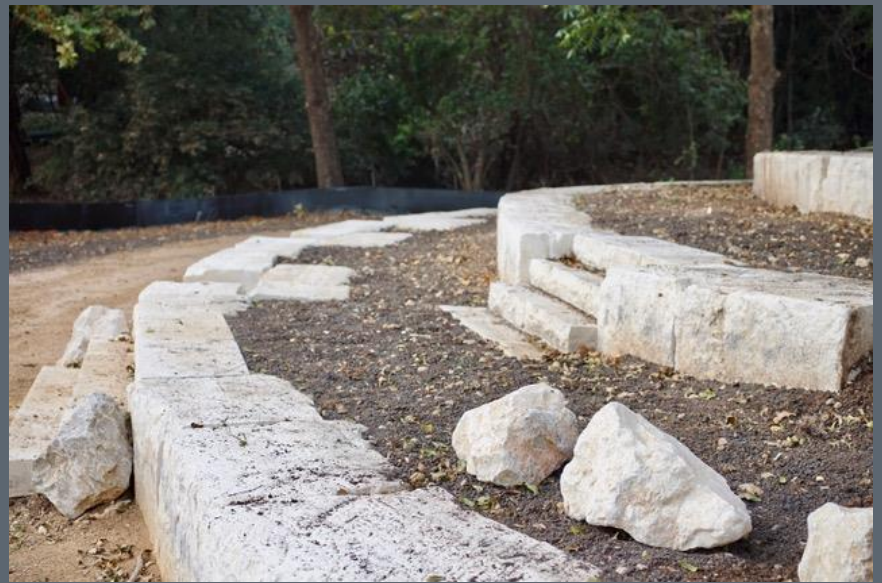
HEADWATERS™
AT THE COMAL



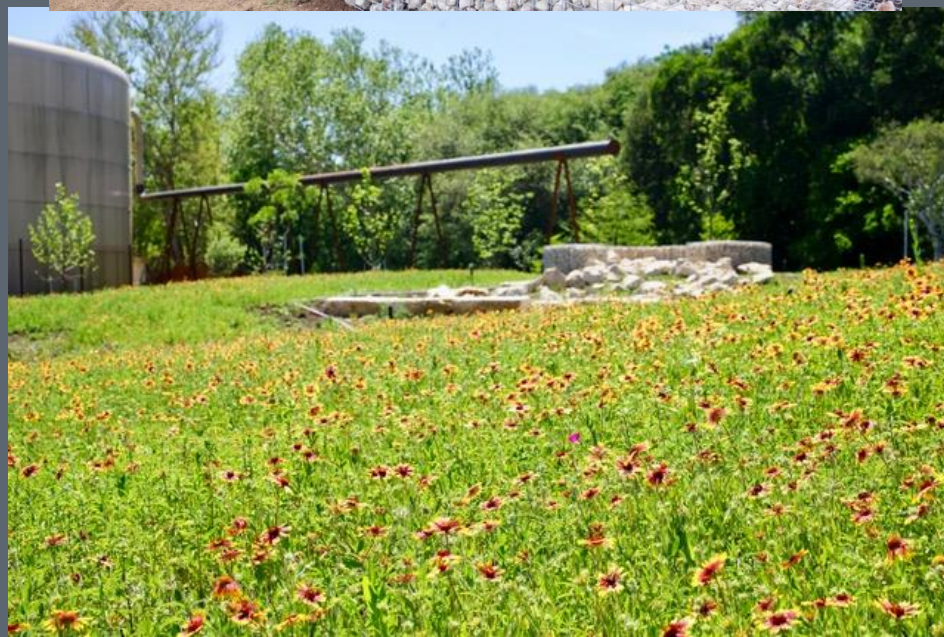
HEADWATERS™
AT THE COMAL



HEADWATERSTM
AT THE COMAL



HEADWATERSTM
AT THE COMAL



HEADWATERSTM
AT THE COMAL

Community Resource

- Tours
- Programming
- Nature Walks
- Events



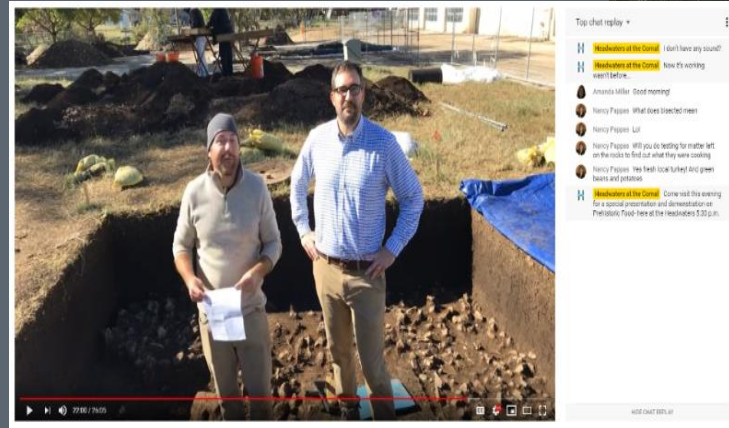
On-Site Monitoring (2016-2017)

- The archeological resources covered more area than anticipated.
- The fish rearing pond did not do as much damage as survey suggested.



300 Cubic Meters Excavation

Significant number of pre-historic features and artifacts in first phase of mitigation.



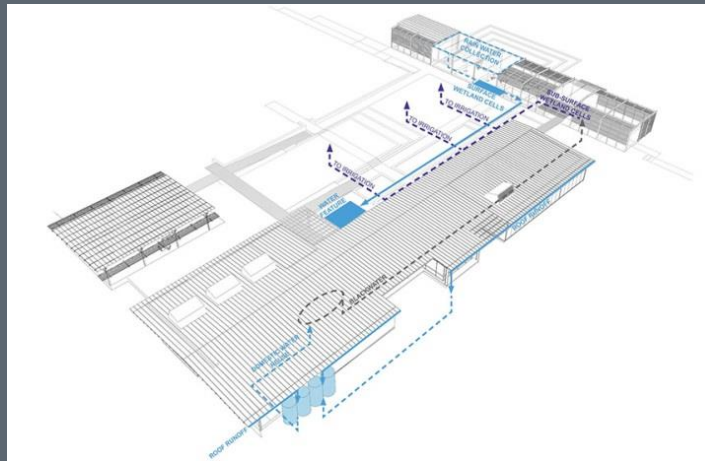
Phase II Buildings

- Comal Springs Environmental Education Center
- Event & Meeting Space
- Demonstration gardens
- Smart building applications



Phase II additional features

- Rainwater harvesting
- Black water reuse system
- Permeable walkways and parking areas
- Smart building applications
- Low impact development – reuse of materials



A Look Ahead

- Continue to develop Operations:
 - Develop & Implement Programming
 - Volunteer & Community Engagement
 - Educational Outreach
- Finalize Archaeological Excavation
- Develop Technical Advisory Committee
- Focus on Phase II Capital Campaign
- Review Master Plan to prepare for Phase II

What the project means for the Region

- A Legacy Project
- Community Resource
- Ecological Restoration
- Demonstration of Sustainable building practices
- Protection of Water Quality in Comal Springs and River
- Preservation of a Significant Historical Site
- Environmental Tourism





HEADWATERS™
AT THE COMAL



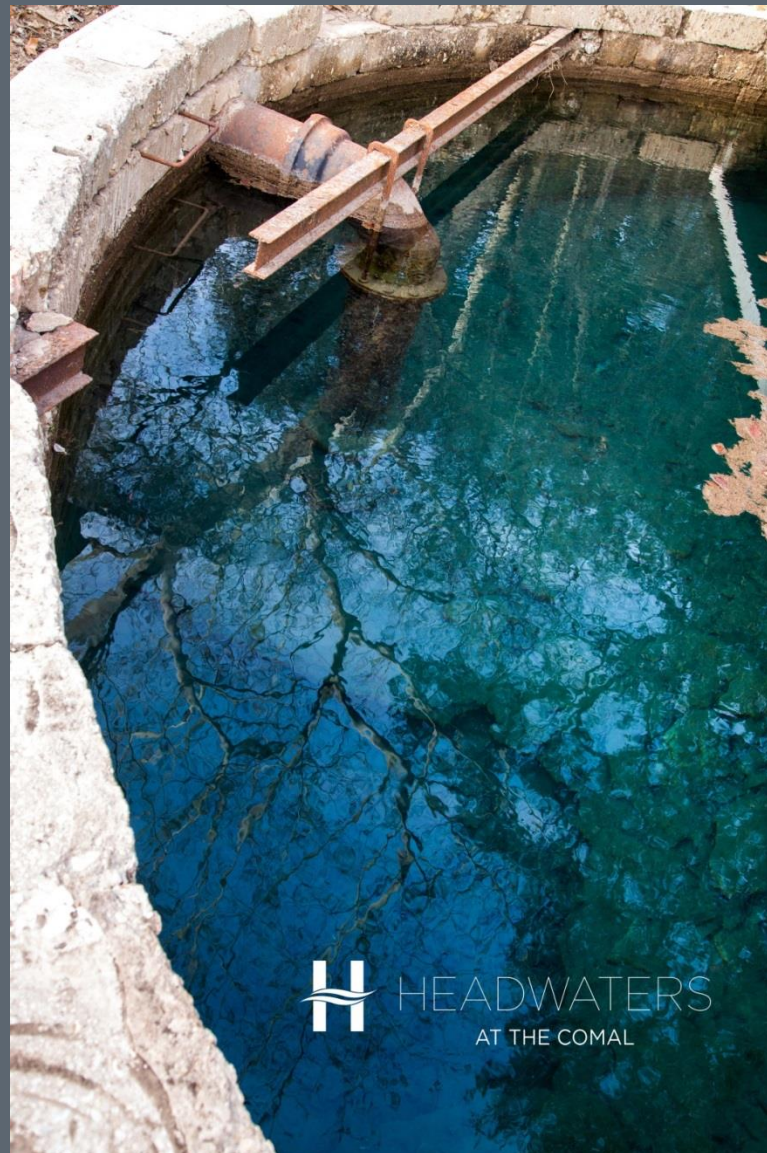
HEADWATERS™
AT THE COMAL



HEADWATERSTM
AT THE COMAL



HEADWATERSTM
AT THE COMAL



 HEADWATERSTM
AT THE COMAL

 HEADWATERSTM
AT THE COMAL