



# Wildlife Management as Water Quality Mgmt Measure

Mark Enders  
Watershed Program Manager  
City of New Braunfels

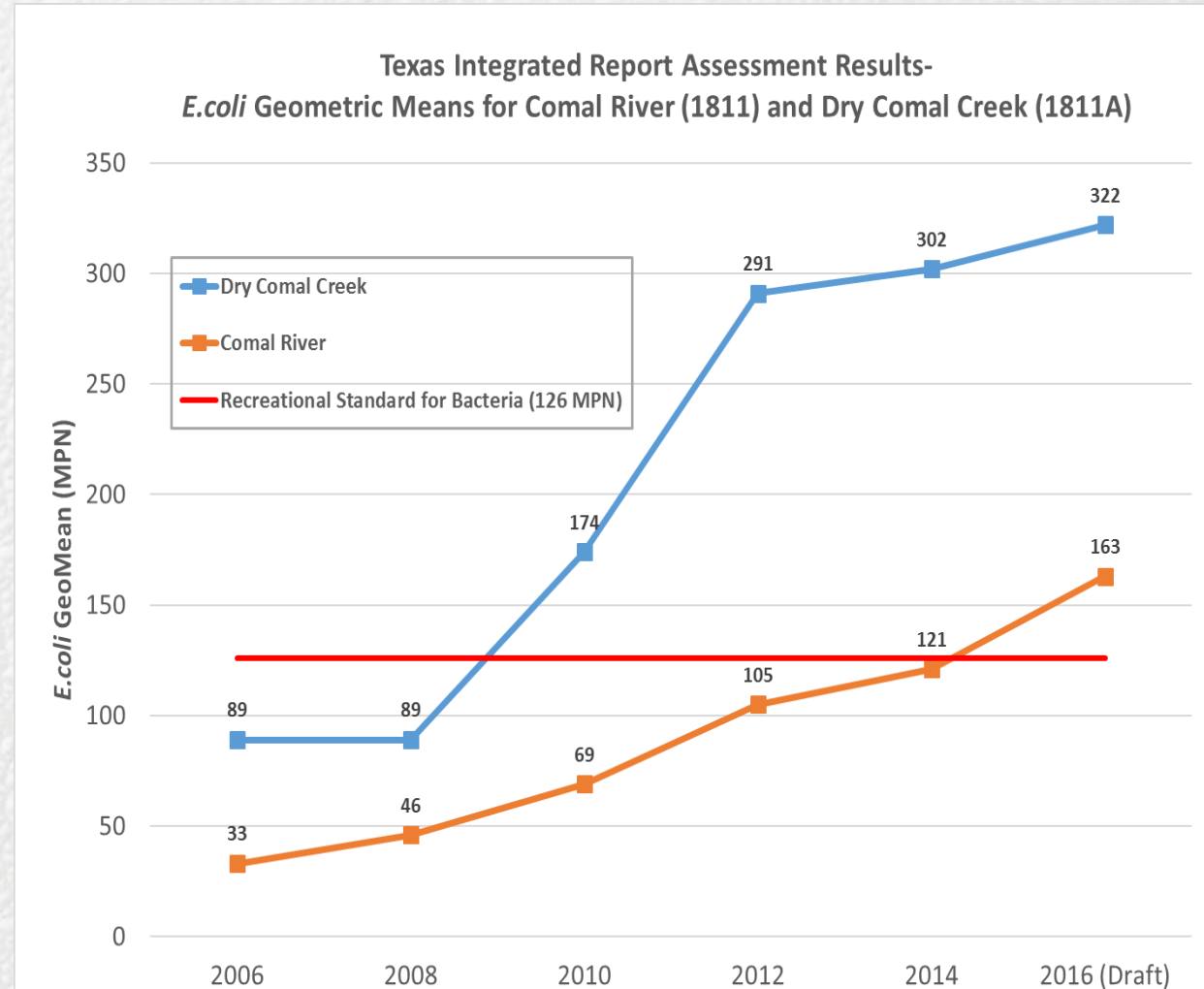
March 19, 2019



# Water Quality Concerns

**Dry Comal Creek:** initially placed on the 303(d) list for bacteria in 2010.

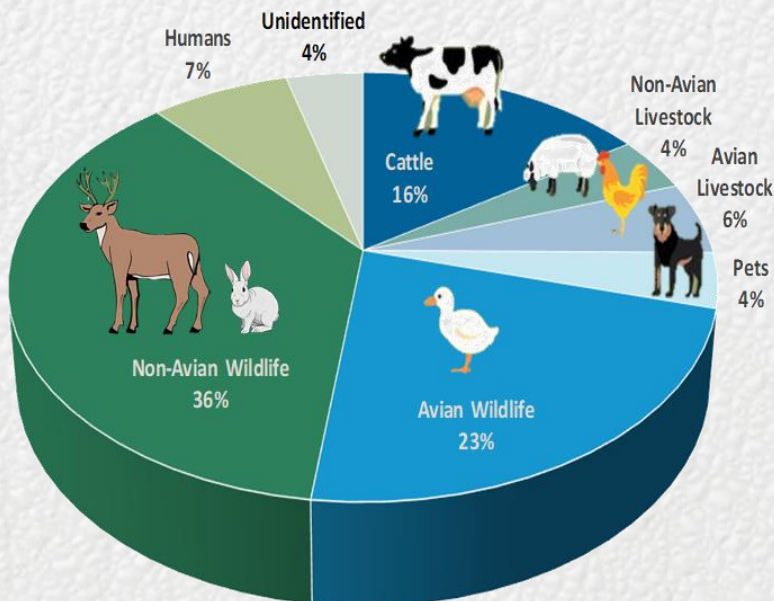
**Comal River:** bacteria levels have been increasing over the past 10 years. Listed on draft 2016 303(d) list



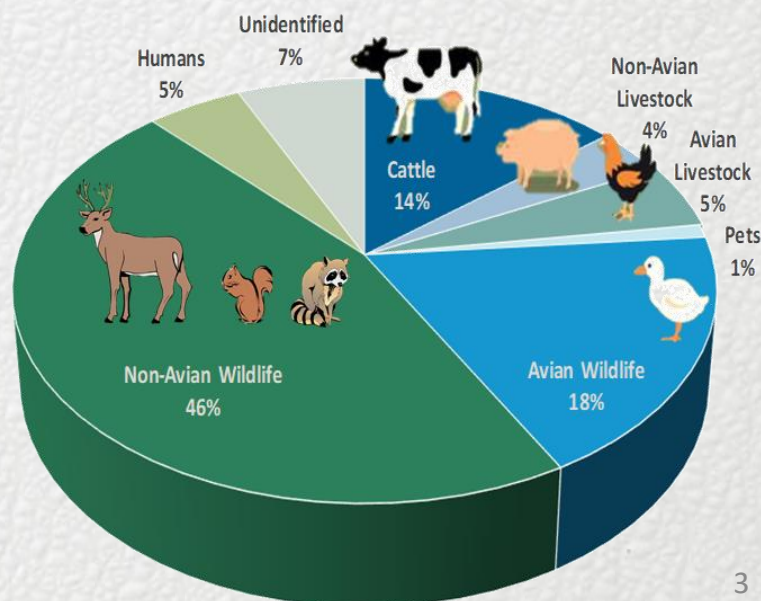
# Water Quality Concerns

- Bacteria Source Tracking (BST) analysis was conducted in 2013 & 2016 by Texas A&M lab to identify sources of bacteria in creek/ river
- Approx. 60% of the bacteria found in Comal River & Dry Comal Creek from wildlife
- The Watershed Protection Plan (WPP) for the Dry Comal Creek and Comal River includes wildlife management measures to address bacteria loading. WPP accepted by TCEQ and EPA. Funding also provided by TCEQ/ EPA to support WPP

Dry Comal Creek Average BST Results  
2013 and 2016 Data



Comal River Average BST Results  
2013 and 2016 Data





# Wildlife-related Traffic Accidents

- CoNB Animal Control Services data:

Annual Deer/ Auto Collision Reports*	
2015	498
2016	644
2017	528
2018	632

\*Total number of deer carcasses collected per year by CoNB Animal Control.



# Supplemental Feeding

Jessica Alderson  
Urban Biologist  
Texas Parks and Wildlife





# Non-Native Ducks and Geese Management Options

- Feeding ordinance
- Trap and remove
- Oil eggs





# CoNB Wildlife Feeding Ordinance



- In Sept 2018, NB City Council passed and approved an ordinance prohibiting the feeding of wildlife within the City limits (Ord No. 2018-58)
- The ordinance became effective March 10, 2019
- The ordinance prohibits the feeding of all wildlife on both public and private property
- 1<sup>st</sup> offense: warning, 2<sup>nd</sup> offense: fines \$75-500
- Exceptions: bird feeders hung at least 5ft above ground & Hunting Land Permit holders



# Feeding Ordinance Signage



-Signage is funded in part by the US Environmental Protection Agency through the Texas Commission on Environmental Quality

# Outreach and Education

- Herald-Zeitung Newspaper
- Community Impact
- Local NB Radio
- News Stations
- Wildlife Mgmt Workshops
- Handouts

## City begins enforcing wildlife ordinance

Warnings, fines go into effect Sunday

By Will Wright  
The Herald-Zeitung

On Sunday, the city of New Braunfels will begin enforcement of the ordinance prohibiting the human feeding of wildlife in the city.

Over the past several months, city officials conducted public awareness meetings on the negative effects of human feedings overabundant numbers of deer and non-native species of ducks and geese in the city.

Dozens of residents attended the Feb. 13 session



## CITY

## Information on city's wildlife feeding ordinance posted online

From Staff Reports

The city of New Braunfels is providing more information on its recently adopted wildlife feeding ordinance, which goes into effect next spring.

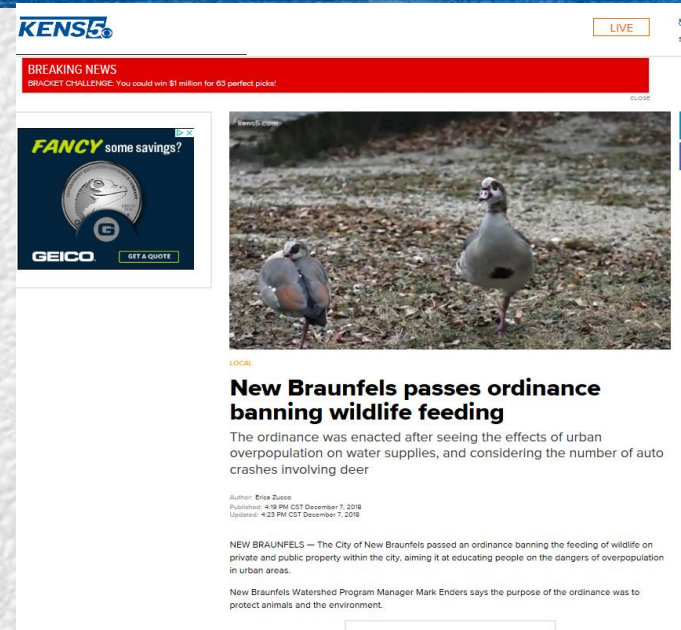
City ordinance 2018-58, which will be enforced in March 2019, prohibits the feeding of wildlife on public and private properties with-

in city limits. For more on the intent and details of the ordinance, visit [www.nbtexas.org/wildlife](http://www.nbtexas.org/wildlife) for information on the negative impacts of wildlife feedings and links to informal and official summaries of the ordinance.

City and Texas Parks and Wildlife Department officials will host a wildlife management workshop at 6 p.m. Wednesday, Feb. 13,

2019, at city hall, 550 Landa Street in New Braunfels.

The public is invited to attend and participate in the workshop, which will include presentations on local urban wildlife management initiatives. For more, contact Mark Enders, city watershed program manager, at 830-221-4639 or via email to [menders@nbtexas.org](mailto:menders@nbtexas.org).





## Next Steps...

- **Continued education and outreach regarding the feeding ordinance and need for wildlife management.**
  - Focus education on youth groups
  - Seek opportunities to present to HOAs, civic groups, etc.
  - Present at local events, Newspaper ads, newsletters, etc.
- **Continued management of non-native waterfowl in Landa Park.**
- **Monitor social carrying capacity stats (i.e. WQ data, deer/ auto collisions) & continue discussions w/ City Council.**





# Questions?

Mark Enders  
City of New Braunfels  
(830) 221-4639  
[menders@nbtexas.org](mailto:menders@nbtexas.org)