



CRP Activities in Kerr County

Tara Bushnoe

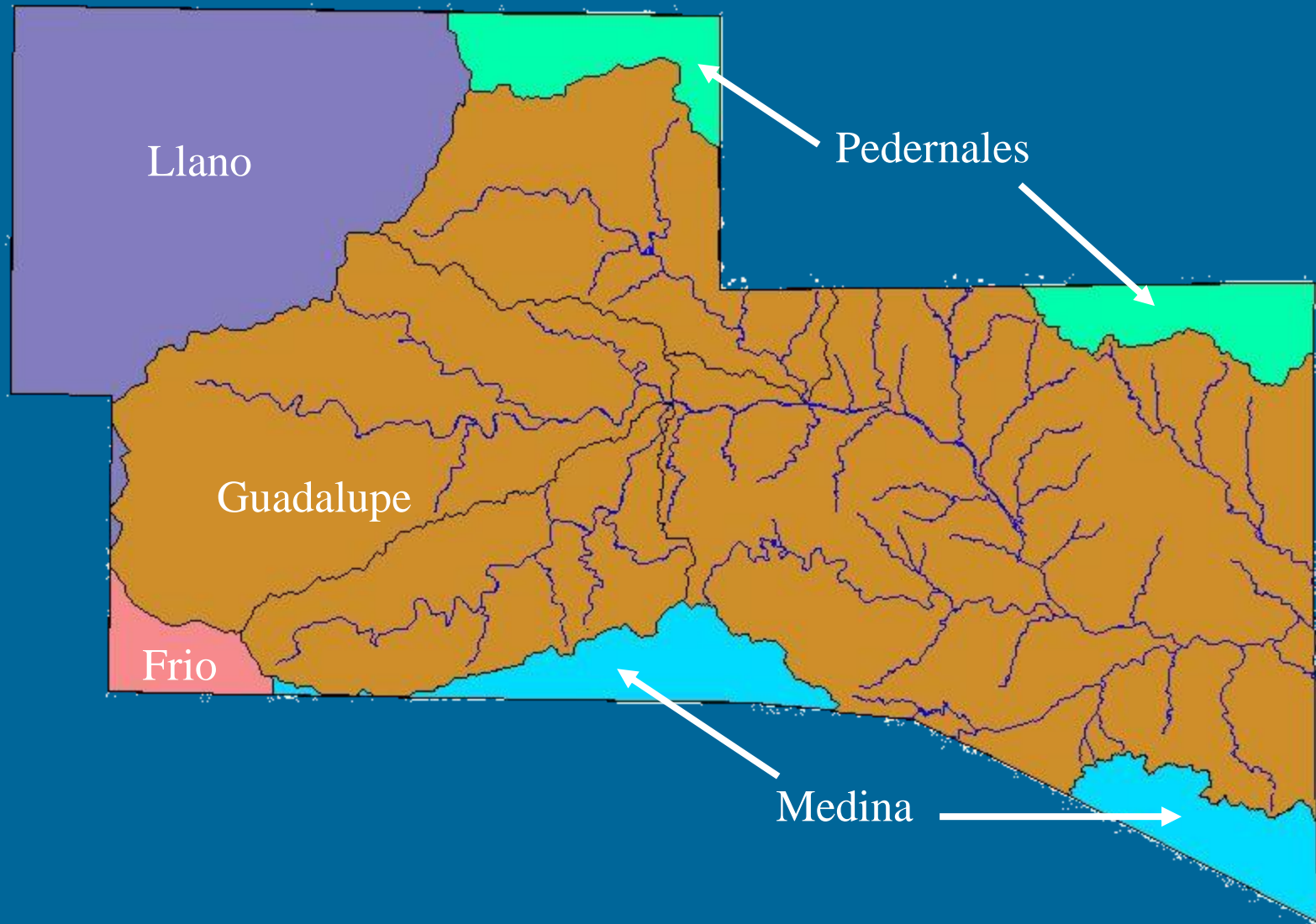
Natural Resources Coordinator

Upper Guadalupe River Authority

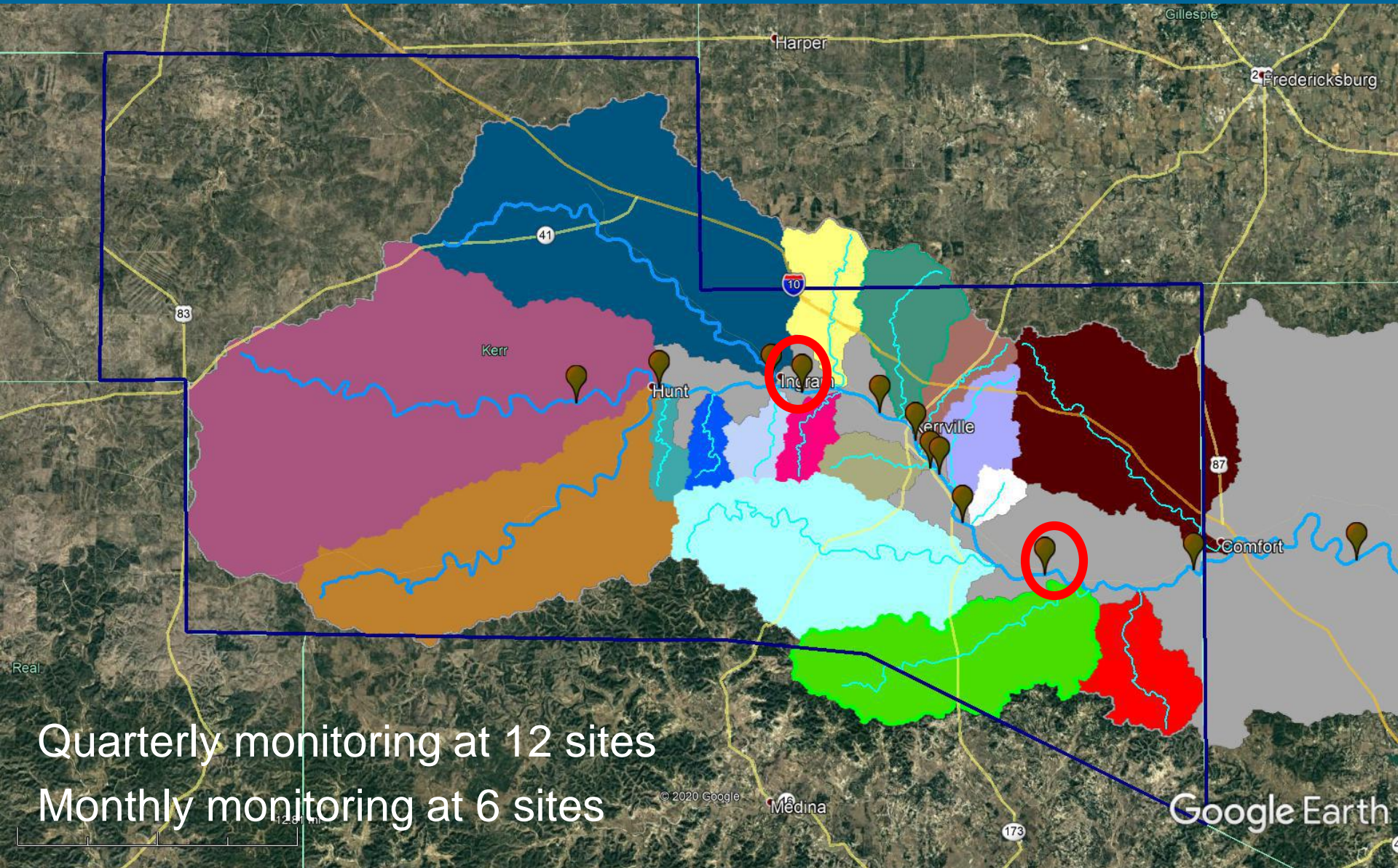




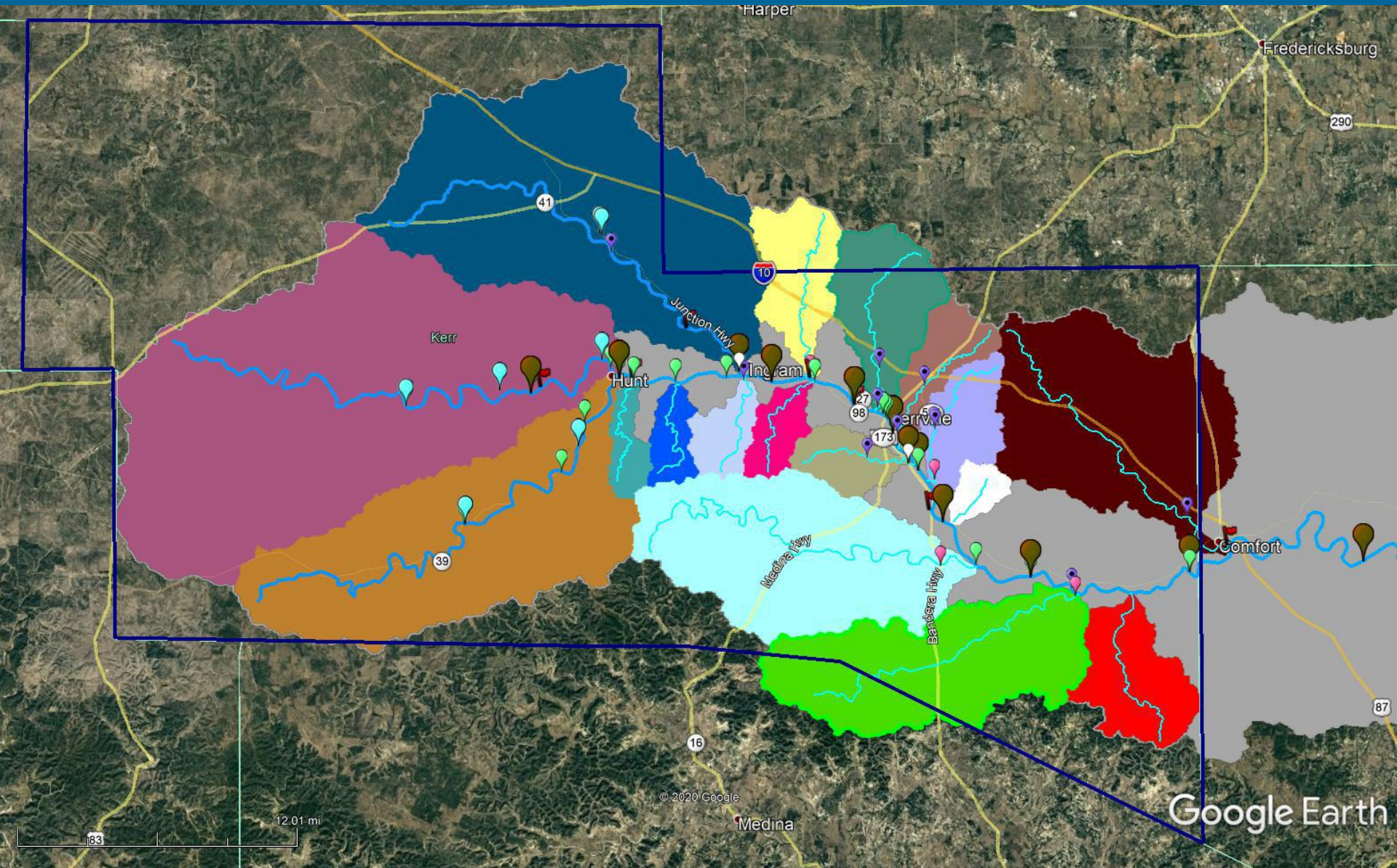
Kerr County Watersheds and Sub Watersheds



CRP Water Quality Monitoring



UGRA Water Quality Monitoring



WQ Monitoring Summary 2019

■ CRP

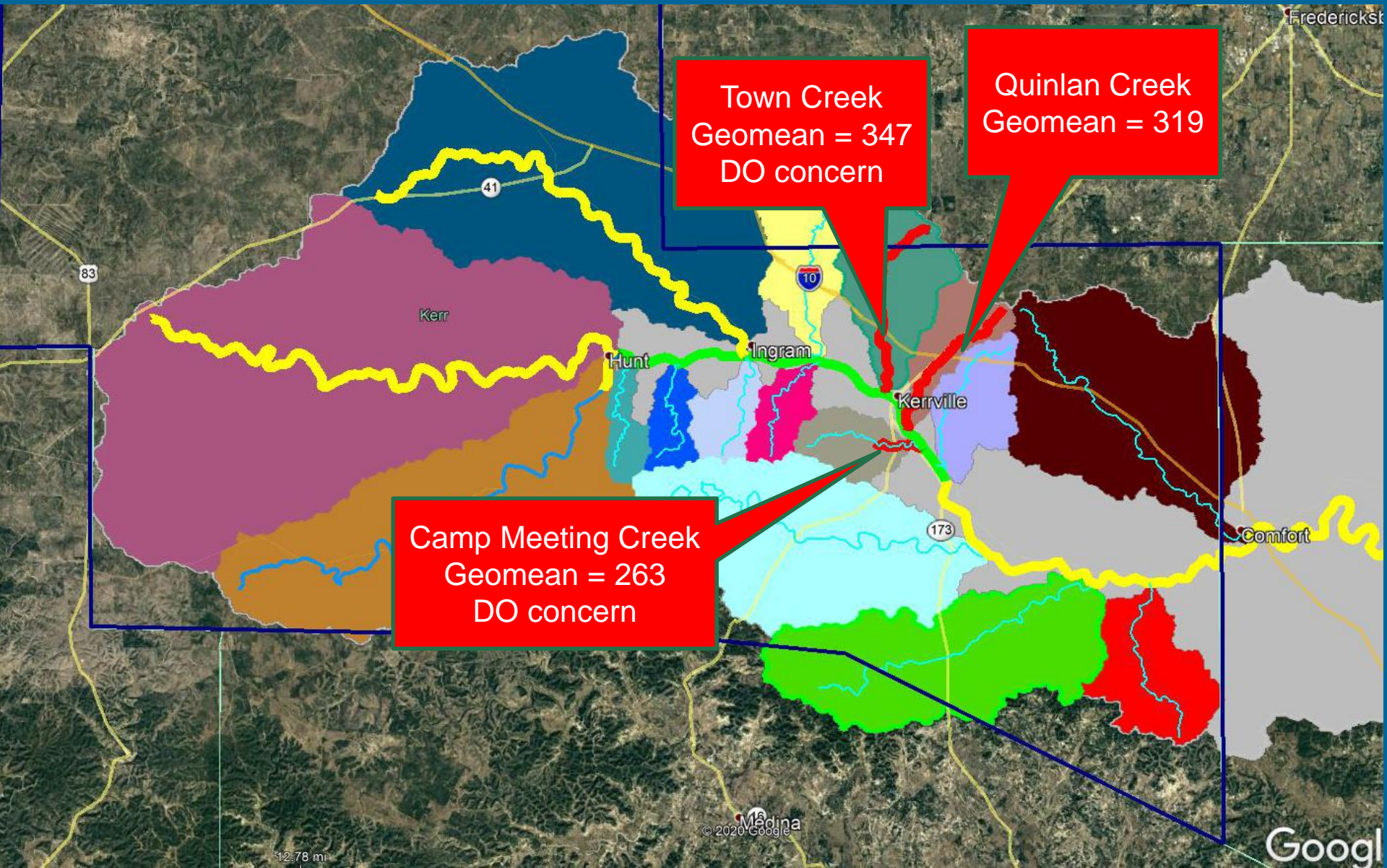
- 16 sampling events
- 17 sites
- 1,115 parameters tested

■ UGRA Water Quality Programs

- 36 sampling events
- 40 sites
- 1,274 parameters tested
- 8 water quality investigations

2020 Integrated Report Findings

12/11 – 11/18



Bacteria Reduction Plan

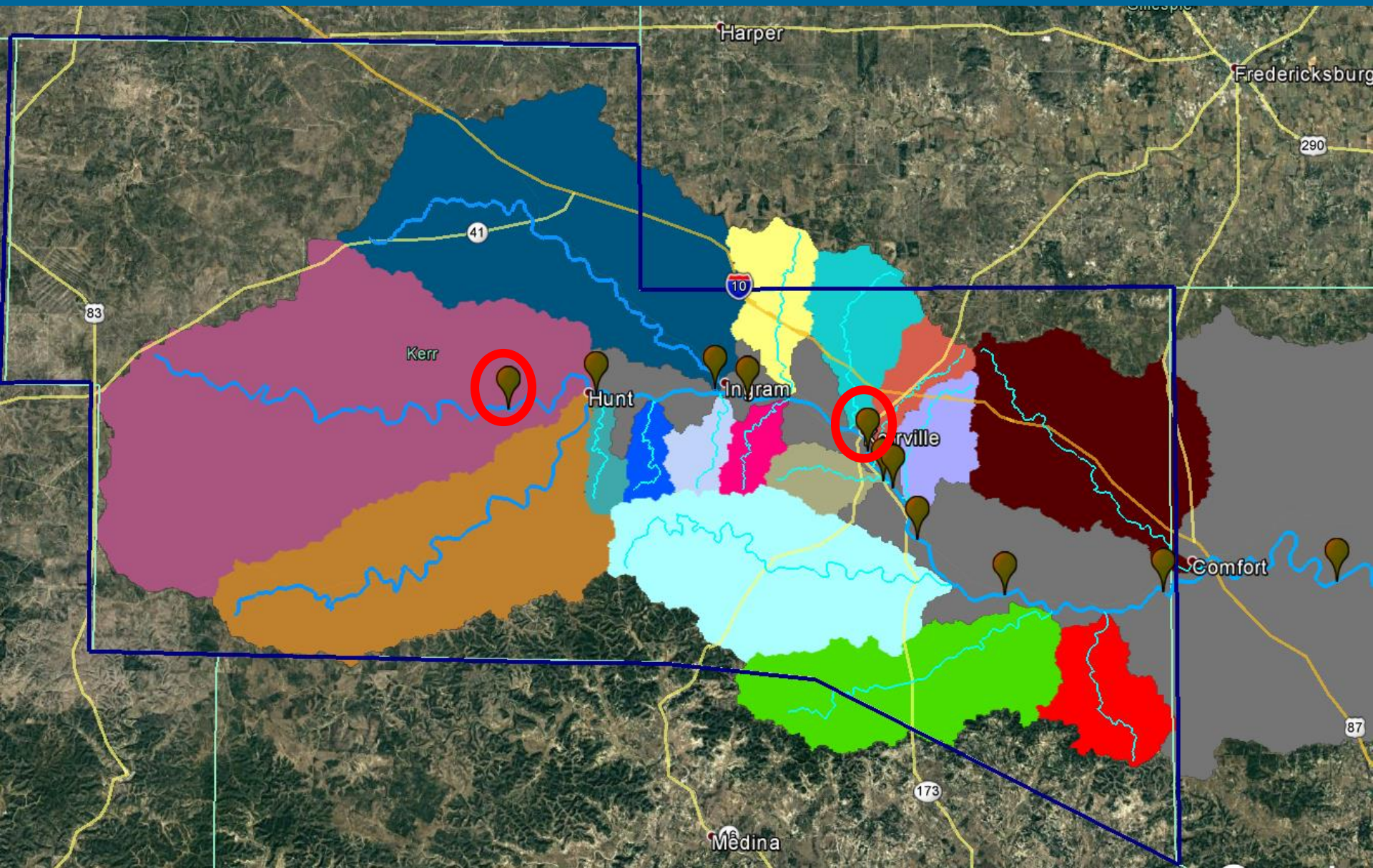
2011 - present

- Mainstem Impairments - 2002
- TMDL - 2007
- Implementation Plan – 2011
- Town and Quinlan Impairments – 2011
- Technical Support Document – 2017
- Implementation Plan Revision - 2018

Bacteria Reduction Plan Implementation Status

- Reduce Bacteria Contributions
 - Wildlife
 - Humans
 - Pet Waste
 - Urban Runoff
- Preserve Riparian Areas
- Promote Green Infrastructure

Water Quality Across Kerr County



North Fork –Waldemar (12682)



Guadalupe River at G Street (12616)



Water Quality Comparison

General Use			
Parameter	Waldemar Mean	G Street Mean	Screening Criteria
Temperature (° C)	20.1	21.2	30.00
Flow	22	71	NA
pH	7.9	8.3	6.5 – 9.0
Chloride (mg/L)	10.2	19.4	50.00
Sulfate (mg/L)	6.3	12.5	50.00
Total Dissolved Solids (mg/L)	249	287	400.00
NH3-N (mg/L)	NA	NA	0.33
Total Phosphorus (mg/L)	<0.04	<0.04	0.69
Chlorophyll-a (µg/L)	<1.0	<1.0	14.1
Nitrate Nitrogen (mg/L)	0.27	0.26	1.95
TKN (mg/L)	0.34	0.32	NA
Recreational Use			
E. coli (MPN/100 mL)	38 Geomean	44 Geomean	126 Geomean
Aquatic Life Use			
Dissolved Oxygen (mg/L)	7.9	10.1	≥4.0 Minimum & ≥6.0 Average

Public Outreach Activities

- Volunteer Summer Study
- Classes
- Special Events
- Workshops
- Radio Programs

3,109
members of
the public

42 events
in 2019

- Newspaper articles
- Commercials
- Information booths
- River Clean Ups
- EduScape tours



Welcome

UGRA EduScape



Quick Facts:

Water demand in Texas is projected to increase dramatically in the future as the state continues to have strong population growth. As a result, protecting water resources and utilizing water conservation practices will be essential to sustain the state's water supply and demand balance. The most economical and environmentally friendly new water source is water saved through conservation.

Did You Know?

The Texas Hill Country sits on the boundary of the Chihuahuan desert. Our position along this transitional zone has resulted in a diverse plant community where both desert and non-desert plants thrive. It also highlights the importance of our springs and river. We must wisely manage our water resources for future generations.



Visit www.ugra.org
or scan for more info.

What You Will Find

As you stroll along the landscape pathway you will see numerous examples of water conservation and stormwater detention practices that help stretch scarce water supply and protect all our water resources including the Guadalupe River. You can implement these same practices in your home or business landscape.

All of the plants featured in EduScape are native to our region and a few adapted plants are included as well. Native and adapted plants are more drought and stress tolerant, so they require less water and maintenance than other varieties. Using only native plants provides additional benefits to wildlife and biodiversity. Look for the plant labels and consider including some of these species in your landscape.

1. Welcome
2. The Guadalupe River
3. Rainwater Harvesting
4. Texas Wildflowers
5. Pervious Surfaces
6. Dry Creek Bed
7. Lawns
8. Condensate Collection
9. Rain Gardens
10. Xeriscape

UGRA recognizes the innovative stewardship of the Hill Country Master Gardeners in the design and construction of the UGRA EduScape, 2018.





Tara Bushnoe
(830) 896-5445
tbushnoe@ugra.org