



Dry Comal Creek and Comal River Watershed Protection Plan

Phillip Quast
Watershed Coordinator
City of New Braunfels

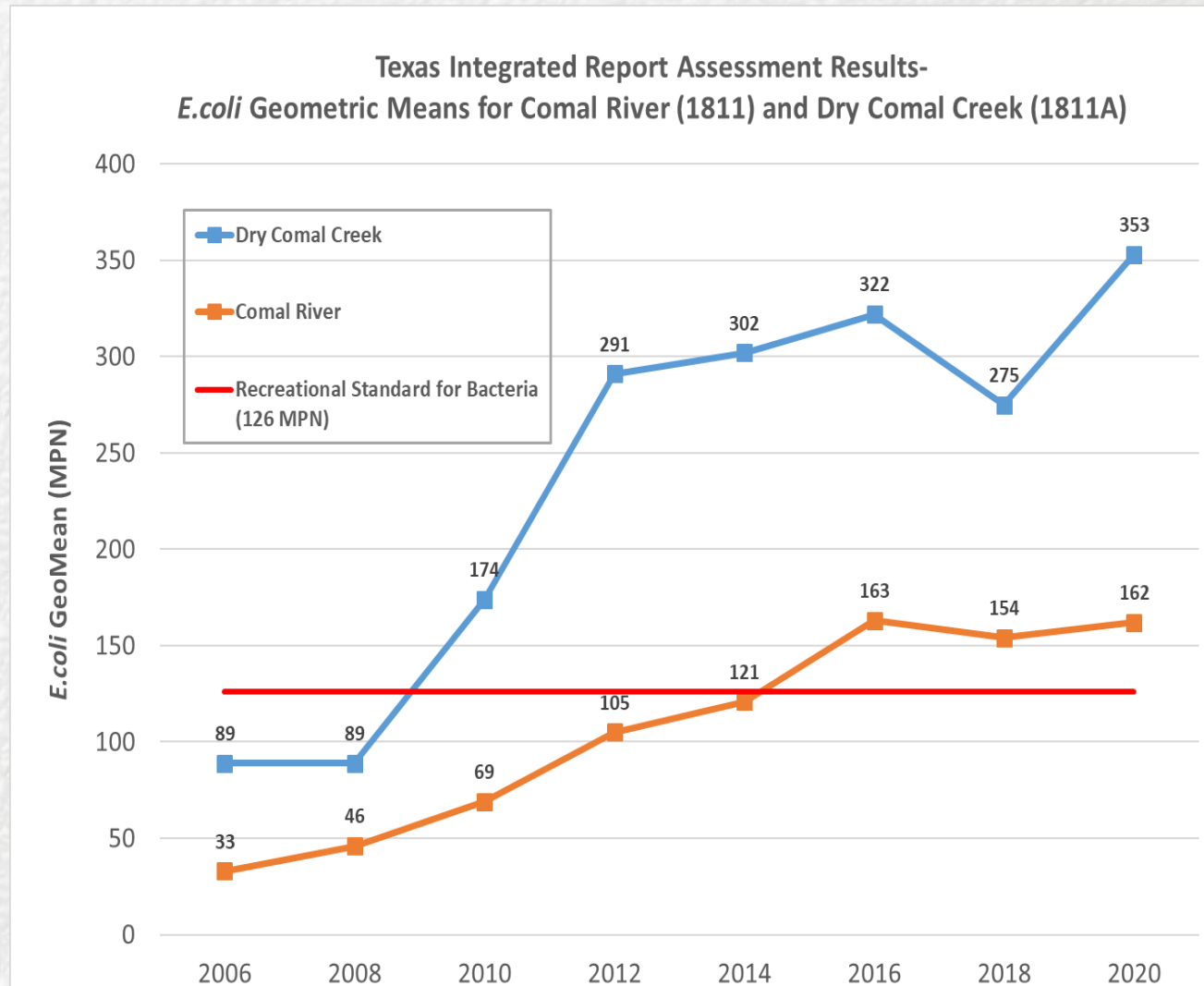
August 20, 2020

Water Quality Concerns

Dry Comal Creek: initially placed on the 303(d) list for bacteria in 2010.

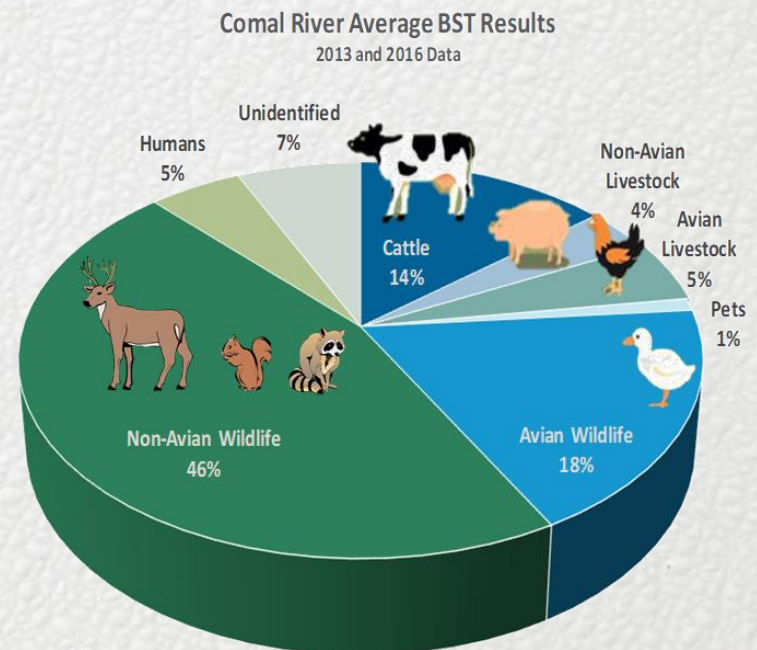
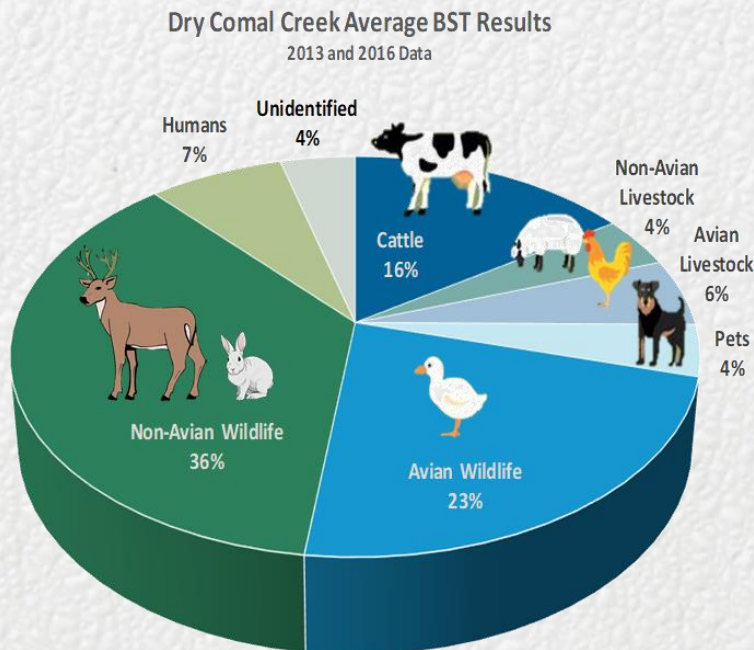
Comal River: initially placed on the 303(d) list for bacteria in 2016.

Note: Each data point represents the GeoMean of approx. 84 samples. For example, the 2020 assessment data points include 84 samples collected 2011-2018.



Water Quality Concerns

- Bacteria Source Tracking (BST) analysis was conducted in 2013 & 2016 by Texas A&M lab to identify sources of bacteria in creek/ river
- Approx. 60% of the bacteria found in Comal River & Dry Comal Creek from wildlife
- The Watershed Protection Plan (WPP) for the Dry Comal Creek and Comal River includes wildlife management measures to address bacteria loading. WPP accepted by TCEQ and EPA in September 2018. Funding also provided by TCEQ/ EPA to support WPP implementation.



CoNB Wildlife Feeding Ordinance



- In Sept 2018, NB City Council passed and approved an ordinance prohibiting the feeding of wildlife within the City limits (Ord No. 2018-58)
 - The ordinance became effective March 10, 2019
 - The ordinance prohibits the feeding of all wildlife on both public and private property
 - 1st offense: warning, 2nd offense: fines \$75-500
 - Exceptions: bird feeders hung at least 5ft above ground & Hunting Land Permit holders

Feeding Ordinance Signage



-Signage is funded in part by the US Environmental Protection Agency through the Texas Commission on Environmental Quality

Non-Native Waterfowl Mgmt

Since early 2019:

- 145 non-native waterfowl have been trapped and removed from Landa Park
- 97 non-native waterfowl eggs have coated with vegetable oil

City of New Braunfels, consultants, and contractors plan to re-evaluate trapping and egg coating protocols in 2020 to increase efficacy and efficiency of both programs in the 2021 winter/ spring season



Pet Waste Mgmt

- Installed educational signage at Puppy Playland dog park in NB
- Purchased and provided pet waste bag dispenser stations for HOAs, City parks and apartment complexes.
- Pet waste bag dispensers



Outreach and Education



- Herald-Zeitung Newspaper
- Community Impact Newspaper
- Local NB Radio
- Television News Stations
- Wildlife Mgmt Workshops
- Postcards, Door Hangers
- Annual Summary, Infographic

Be **Watershed** **Wise!**
Learn how to protect our springs, rivers, and the
Dry Comal Creek and Comal River Watershed

What is a Watershed?

A watershed is an area that channels water traveling across the land surface into bodies of water, such as rivers and creeks, that eventually flow to lakes and oceans.

Small watersheds add up to form a larger watershed.

Our schools, parks, businesses and homes are all located within a watershed.

Dry Comal Creek and Comal River Watershed

SPRINGS. RIVERS. WATERSHED. OUR RESPONSIBILITY
NEW BRAUNFELS WATERSHED MANAGEMENT

Funded in part by the EPA through the TCEQ

Be **Watershed** **Wise!**
Learn how to protect our springs, rivers, and the
Dry Comal Creek and Comal River Watershed

nbtexas.org/wpp

Learn more and get involved at: www.nbtexas.org/wpp

City begins enforcing wildlife ordinance

Warnings, fines go into effect Sunday

By Will Wright
The Herald-Zeitung

On Sunday, the city of New Braunfels will begin enforcement of the ordinance prohibiting the human feeding of wildlife in the city.

Over the past several months, city officials conducted public awareness meetings on the negative effects of human feedings: overabundant numbers of deer and non-native species of ducks and geese in the city.

Discouraging residents at...

CITY

Information on city's wildlife feeding ordinance posted online

From Staff Reports

The city of New Braunfels is providing information on the wildlife feeding ordinance which goes into effect on March 2nd. The ordinance prohibits feeding of wildlife in city limits. For more on the intent and details of the ordinance, visit www.nbtexas.org/wpp.

The public is invited to attend the ordinance enforcement training on Sunday, Feb. 13, 2019, at city hall, 550 Landa Street in New Braunfels.

SPRINGS. RIVERS. WATERSHED. OUR RESPONSIBILITY
NEW BRAUNFELS WATERSHED MANAGEMENT

Funded in part by the EPA through the TCEQ

Outreach and Education

Infographic published in August 2020 edition of New Braunfels Community Impact

DRY COMAL CREEK & COMAL RIVER WATERSHED PROTECTION PLAN



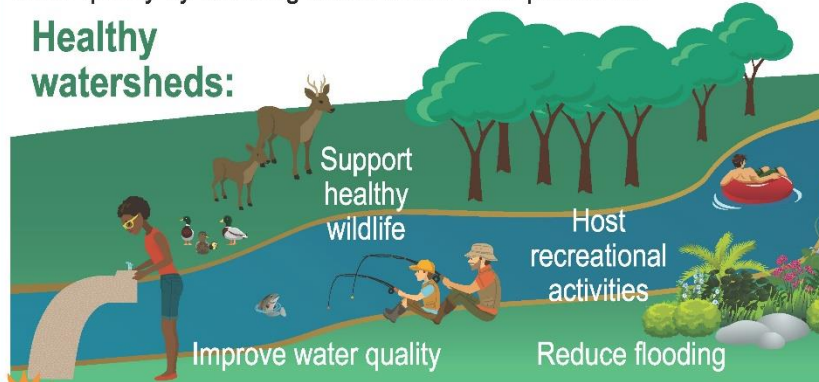
What is a watershed?

A watershed is an area that channels water traveling across the land surface into bodies of water, such as rivers and creeks, that eventually flow to lakes and oceans. As stormwater flows through the watershed toward rivers and creeks, it has the potential to carry pollutants.



The Dry Comal Creek and Comal River are both categorized by the State of Texas as impaired due to high bacteria concentrations. Testing shows that a majority of bacteria found in the Comal River and Dry Comal Creek (**64%**) are from wildlife. Our goal is to protect water quality by reducing bacteria and other pollutants.

Healthy watersheds:






THANK YOU! for helping us protect our springs, rivers, and watersheds!



We're improving our watershed!

-  Passed Do-Not-Feed Wildlife Ordinance
-  Installed signs and conducted education
-  Provided pet waste stations
-  Conducted non-native waterfowl management

How can I help?

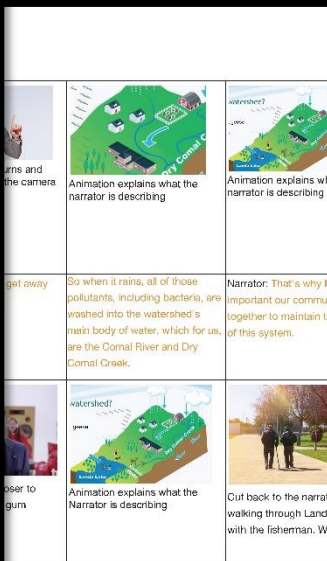
-  Pick up pet waste
-  Enjoy wildlife at a distance
-  Properly dispose of trash

Learn more about how to help at www.nbtexas.org/wpp

Outreach and Education

WPP Educational Video

- Production to be finalized in August 2020
- To be shown at two local movie theaters prior to each movie for 10 weeks, website links will also be included in theater email marketing campaigns
- Will be shown on New Braunfels local access channel, CoNB facilities with video screens, CoNB WPP website
- Shortened versions for social media distribution



Next Steps...



- **Continued education and outreach for WPP programs**
 - Develop education curricula and activities with NBU watershed educator; position funded through WPP grant
 - Focus education on youth groups; virtual programming for 2021
 - Seek opportunities to present to HOAs, civic groups, etc.
- **Continued management of non-native waterfowl in Landa Park**
- **Install watershed signage within New Braunfels city limits and Comal County area within watershed**
- **Monitor social carrying capacity stats (i.e. WQ data, deer/ auto collisions)**

Next Steps...

- **Applied for FY21 319(h) NPS grant funding through TCEQ to support continued WPP implementation**



Additional WPP Information:

www.nbtexas.org/wpp



www.nbtexas.org/dosrioscleanup



Questions?

Phillip Quast
Watershed Coordinator
City of New Braunfels
(830) 221-4651
pquast@nbtexas.org