



Steve Risinger  
Plum Creek Watershed  
Coordinator

# Clean Rivers Program Basin Steering Committee Meeting

August 20, 2020

# Agenda

---

## ❖ Updates

- ❖ Feral Hog Bounty

- ❖ Town Branch Riparian Restoration

## ❖ Events

The background is a dark gray with several realistic water droplets of various sizes scattered across it. On the left side, there is a partial view of a brown bird's head and beak. The text 'Plum Creek' is written in a large, dark teal, cursive-style font. Overlaid on this is the word 'Updates' in a white, hand-drawn, slightly irregular font. Below 'Plum Creek' is the text 'Watershed Partners' in a smaller, dark brown, serif font. A thin, dark teal curved line is at the bottom of the image.

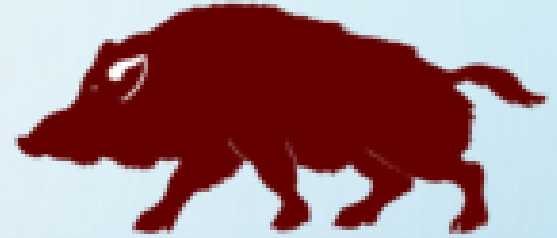
# Plum Creek Updates

Watershed Partners



# Feral Hog Bounty Program

- Started February 4<sup>th</sup> 2020
- 2,003 feral hogs removed
- 25+ Landowners/trappers



**Central Texas**  
FERAL HOG TASK FORCE





# Feral Hog Bounty Program

➤ Postponed March-June due to

COVID-19

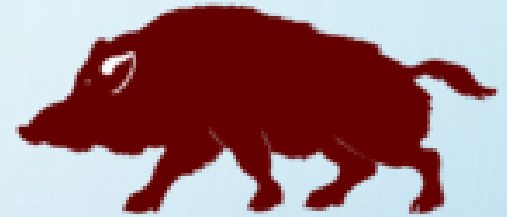
➤ Virtual bounty implemented

July 1st – August 15

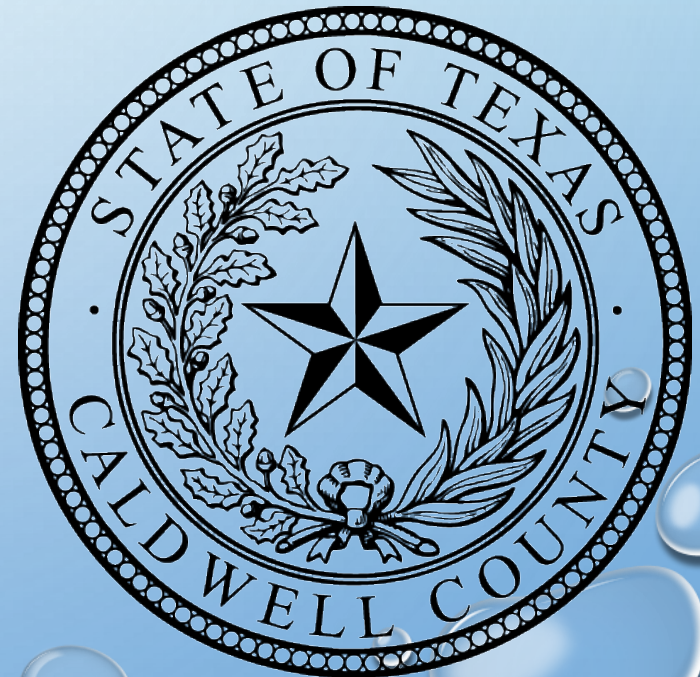
- 931 tails/receipts submitted  
via email

➤ Aerial control conducted

➤ 3 trapping kits available



**Central Texas**  
FERAL HOG TASK FORCE





# THAT'S ALL FOLKS!

*The 2020 Caldwell County feral hog bounty program has ended. Caldwell County has over 2000 fewer pigs and a fully allocated bounty. Thank you to all who participated!*







---

# **FERAL HOG WEBINARS THIS WEEK!**

---

TUESDAY, JULY 28 @ 12 - 1 PM

WEDNESDAY, JULY 28 @ 12 - 1 PM

- Presentations from NRI regarding feral hog information and trapping/exclusion techniques
- 45 Attendees over two days



# Town Branch Riparian Restoration

---

- CWA 319 Funded
- Collaboration between:
  - TCEQ
  - City of Lockhart
  - Nueces River Authority
  - The Plum Creek Watershed Partnership
- Project Status:
  - No-mow and buffer strip areas established along Town Branch
  - Educational signage installed
  - 2,000 ft Rain Garden installed
  - O&M Procedures in Review



















**Riparian Zones with tall grasses and plants:**

- Improve water quality and quantity
- Stabilize streambanks from erosion
- Provide wildlife habitat and food
- Shade streams and lower temperatures

**Zona ribereña delicada  
¡No corte las hierbas!**

**Zona ribereña de pastos altos y plantas silvestres:**

- Mejoran la cantidad y calidad del agua
- Estabilizan los causes de erosión
- Proporcionan un entorno de vida silvestre y de alimentos
- Hay mucha sombra para el suelo y para moderar las temperaturas del agua



plumcreekwatershed.org





# Plum Creek

Events

Watershed Partners



# Plum Creek Watershed Cleanup

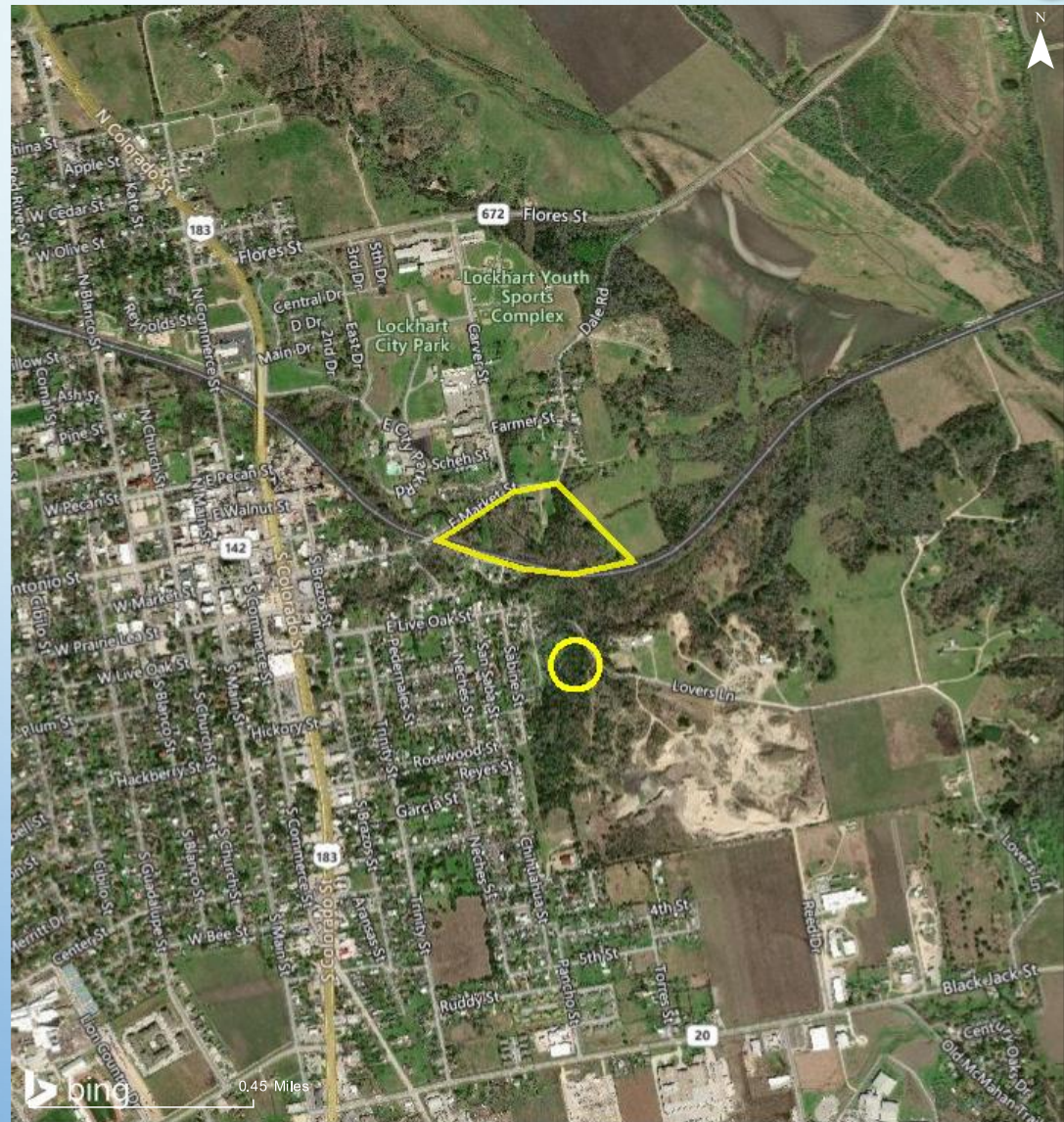
➤ November 2020

➤ Locations

- E. Market St
- Lover's Ln

➤ Sponsors

- City of Lockhart
- Keep Lockhart Beautiful
- Caldwell County
- The Plum Creek Watershed Partnership

















# TEXAS Watershed Steward

## Luling, TX

Workshop provided through Clean Water Act 319 nonpoint source grant funding from the TSSWCB and U.S. EPA



The Texas Watershed Steward program is a free, educational workshop designed to help watershed residents improve and protect their water resources by getting involved in local watershed protection and management activities.

**September 2, 2020:  
8:00 am - 12:00 pm**

Luling Foundation Ag. Demonstration Farm  
523 S Mulberry Avenue  
Luling, TX 78648

**In-Person & Virtual Attendance Options Available**  
Preregistration Required

The workshop will provide an overview of water quality and watershed management in Texas, including a discussion on the Plum Creek watershed. Efforts by the Plum Creek Watershed Partnership, and best management practices local stakeholders may use to help improve and protect their water quality, will be highlighted. Free continuing education credits/CEUs offered for a wide variety of professional disciplines. For a complete list of continuing education offered, or to register, visit our website or call the number below.

Pre-register for the workshop by going to:  
<https://tw.s.tamu.edu/workshops/registration>  
or call 979.862.4457

TEXAS A&M  
**AGRI**LIFE  
EXTENSION

TEXAS STATE  
**Soil & Water**  
CONSERVATION BOARD



The background is a dark gray gradient. It is filled with numerous question marks of various sizes and colors, including red, blue, green, and yellow, some with diagonal stripes. In the lower half of the image, many human hands of different skin tones are raised, palms facing forward. Scattered throughout the image are several realistic, 3D-rendered water droplets of varying sizes, some appearing to float or fall.

Questions?