



Study of Recreational Boating use on Lakes Dunlap, McQueeney, Placid, Nolte (Meadow Lake), Gonzales (H4) & Wood (H5)

GBRA Public Meeting

27 March, 2010



Study Background & Purpose

- 1. Provide an overview of the modes of use; e.g., preferred activities, timing, area of use**
- 2. Perceptions of lake conditions; social (e.g., crowding, safety) and environmental (e.g., lake conditions, erosion, aquatic vegetation)**
- 3. Preferences for managing recreational boating**
- 4. Perceived impact of recreational boating on shoreline structures/development**



Who We Surveyed

1. Public boat ramp users surveyed over the Labor Day Holiday weekend
 2. GBRA supplied mailing lists
 3. County-wide mailing list
- **585 completed surveys**
 - Dunlap=111; McQueeney=276; Placid=110; Nolte=22; Gonzales=13; Wood=31



Respondent Characteristics (overall)

- **Age = 57 years**
- **Gender = 75% male**
- **Employment status = 50% employed fulltime;
33% retired**
- **Household income = 32% > \$200K**



Respondent Characteristics (overall)

- **66% own lakeshore properties**
 - 57% their primary residence
 - Owned for 16 years (avg.)
 - 92% have a bulkhead/dock/slip
 - 46% indicated having bulkhead/dock/slip damaged from boating activities in last three years
 - \$11,377 average cost of repair



Boat Use (overall)

- **Most often used – 2009 Season**
 - Speedboat/ski boat – 32.5%
 - Fishing/bass boat – 15.9%
 - Pontoon boat – 14.9%
 - Inflatable pulled behind another watercraft – 11.6%
 - Wakeboard boat – 9.5%
 - High performance boat – 1.3%
 - PWC – 14.0%
- **Observed over July 4th and Labor Day holiday weekend**
 - Speedboat/ski boat – 29.6%
 - Fishing/bass boat – 22.7%
 - Pontoon boat – 5.9%
 - Inflatable pulled behind another watercraft – 1.0%
 - Wakeboard boat – 13.4%
 - High performance boat – 0%
 - PWC – 46.8%



Crowding - Enjoyment

- How did the **number of people you saw** affect your overall enjoyment
 - 30% - “**No effect**” on my enjoyment
 - 38% - “Detracted **a little** from my enjoyment
 - 21% - “Detracted **a lot** from my enjoyment



Safety

- In light of the **number of boats** you saw on the lake this season, please rate how safe you felt
 - 8% - “Extremely safe”
 - 41% - “Moderately safe”
 - 8% - “Not at all safe”
- In light of the **behavior of other boaters** on the lake this season, please rate how safe you felt
 - 5% - “Extremely safe”
 - 41% - “Moderately safe”
 - 10% - “Not at all safe”



Crowding

- ... how would you describe the boating conditions on the lake... for the 2009 season?
 - 21.2% - “Extremely crowded”
 - 39.4% - “Moderately crowded”



Issues of Concern

- **“Other boats came closer to my boat than I like”**
 - 52.8% agree
 - 23.1% disagree
- **“Boating in high use areas involved too much risk”**
 - 51.4% agree
 - 32% disagree



Issues of Concern

- **“Other boaters created massive wakes”**
 - 65.2% agree
 - 20.1% disagree
- **“I witnessed reckless boating operations by other boaters (i.e., unsafe speeds, dangerous behaviors, etc.)**
 - 64.2% agree
 - 18.2% disagree



Issues of Concern

- **“Other boaters played overly amplified music”**
 - 46.4% agree
 - 28.1% disagree
- **“I was bothered by personal watercraft cutting too close to my boat”**
 - 51.5% agree
 - 31% disagree



Issues of Concern

- **“There was adequate law enforcement patrols on the lake”**
 - 53% agree
 - 32.5% disagree
- **“The presence of personal watercraft interfered with the quality of my boating experience”**
 - 41.6% agree
 - 35.6% disagree



Lake Management Preferences

- **“Establish a minimum age of 15 years for the operation of personal watercraft (e.g., jetskis)”**
 - 80.4% support
 - 9.4% oppose
- **“Training for the operation of personal watercraft”**
 - 84.5% support
 - 6.8% oppose



Lake Management Preferences

- **“Establish a minimum age of 15 years for towing inflatables, skiers and wakeboarders”**
 - 80% support
 - 11% oppose
- **“Dredge the lake to improve depth”**
 - 72.1% support
 - 12.4% oppose



Lake Management Preferences

- **“Provide more aggressive enforcement of safety rules and regulations”**
 - 62.4% support
 - 15.4% oppose
- **“Cite boaters who’s music can be heard within 100 feet”**
 - 45.4% support
 - 32.8% oppose



Lake Management Preferences

- **“Training for all watercraft operators”**
 - 80.4% support
 - 9.4% oppose
- **“Online training for all watercraft operators”**
 - 62% support
 - 15.4% oppose



Responses on Key Issues by Lake



Lake Dunlap

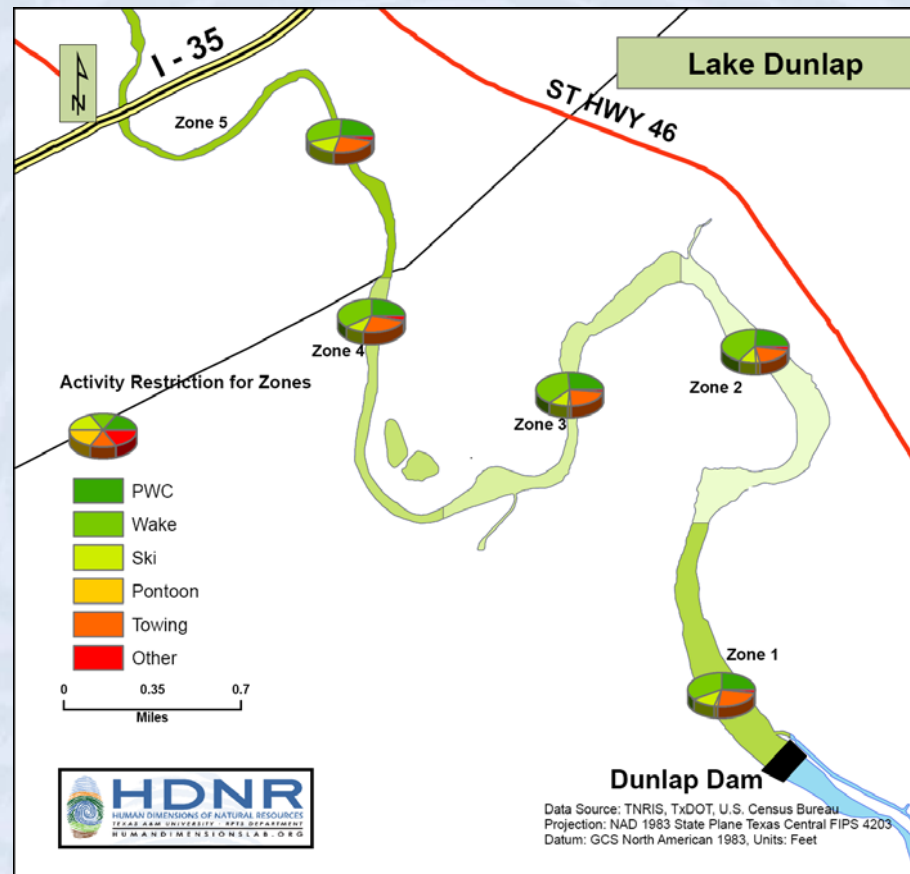


Lake Dunlap

- **89.7% lakeshore property owners**
- **Watercraft most often used – 2009 Season**
 - Speedboat/ski boat – 33.7%
 - Fishing/bass boat – 12.9%
 - Pontoon boat – 21.8%
 - Inflatable pulled behind another watercraft – 1.0%
 - Wakeboard boat – 14.9%
 - PWC – 9.9%

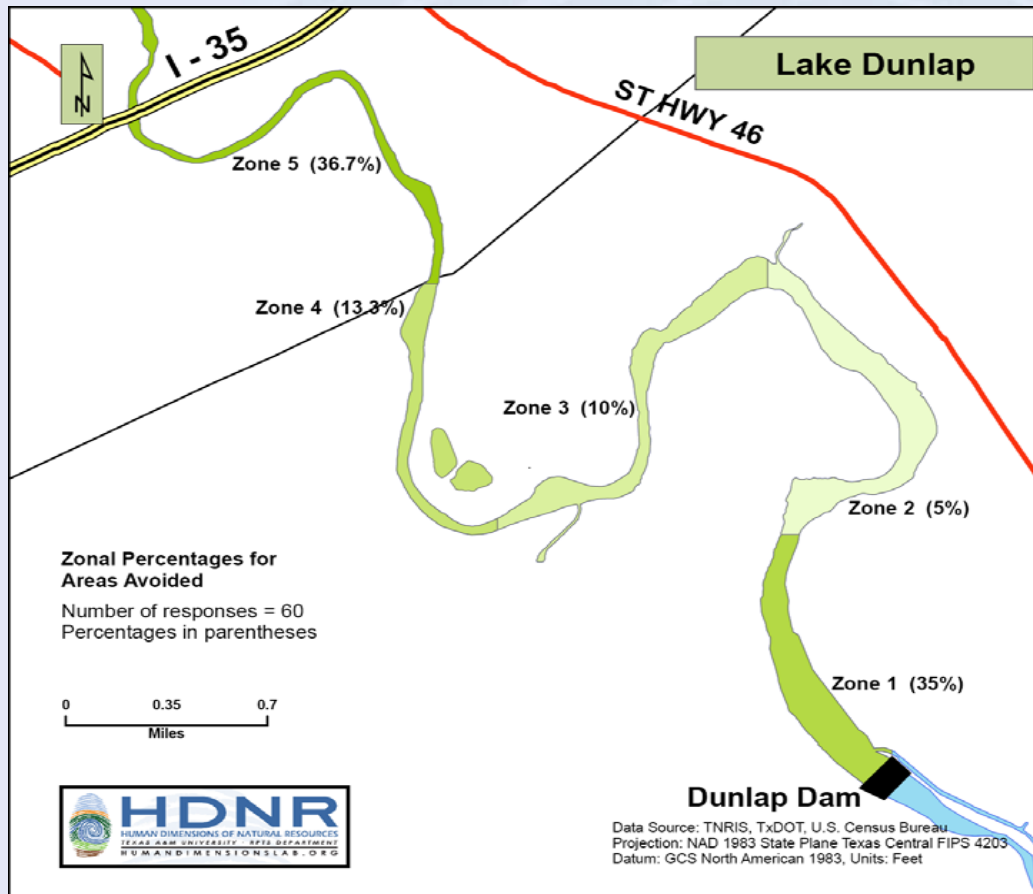


Restricting Use to Zones Across the Lake





Areas Avoided



- **Reasons**
 - Narrow
 - Submerged obstacles



Crowding - Enjoyment

- How did the **number of people you saw** affect your overall enjoyment
 - 24.3% - “**No effect**” on my enjoyment
 - 51.5% - “Detracted **a little** from my enjoyment
 - 16.5% - “Detracted **a lot** from my enjoyment



Safety

- In light of the **number of boats** you saw on the lake this season, please rate how safe you felt
 - 2.9% - “Extremely safe”
 - 39.2% - “Moderately safe”
 - 4.9% - “Not at all safe”
- In light of the **behavior of other boaters** on the lake this season, please rate how safe you felt
 - 2.0% - “Extremely safe”
 - 40.2% - “Moderately safe”
 - 8.8% - “Not at all safe”



Perceived Crowding

- ... how would you describe the boating conditions on the lake... for the 2009 season?
 - 13.7% - “Extremely crowded”
 - 44.1% - “Moderately crowded”



Issues of Concern

- **“Litter on shoreline”**
 - 25.5% consider it a “moderate problem”
 - 35.7% consider it a “big problem”
- **“Loud music played from watercraft”**
 - 26.3% consider it a “moderate problem”
 - 33.3% consider it a “big problem”
- **“Erosion of shoreline”**
 - 15.2% consider it a “moderate problem”
 - 41.4% consider it a “big problem”



Issues of Concern

- **“Large wakes from wakeboarding boats”**
 - 11.1% consider it a “moderate problem”
 - 49.5% consider it a “big problem”
- **“Aquatic vegetation”**
 - 16.3% consider it a “moderate problem”
 - 32.7% consider it a “big problem”



Managerial Issues

- Respondents were most supportive of establishing a minimum age of 15 years for PWC operators & towing inflatables, in addition to requiring training for all PWC operators
- Other issues receiving support include more aggressive law enforcement and the dredging of the lake



Lake McQueeney

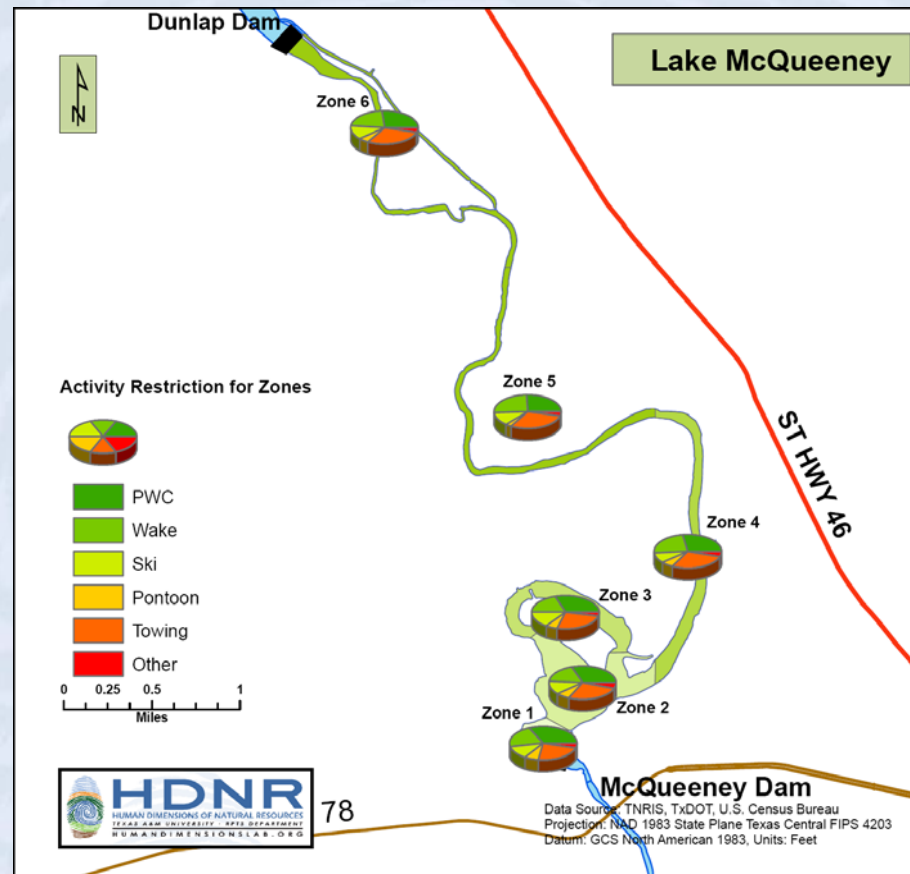


Lake McQueeney

- **89.7% lakeshore property owners**
- **Watercraft most often used – 2009 Season**
 - Speedboat/ski boat – 33.7%
 - Fishing/bass boat – 6.8%
 - Pontoon boat – 12.0%
 - Inflatable pulled behind another watercraft – 0
 - Wakeboard boat – 11.2%
 - PWC – 7.6%

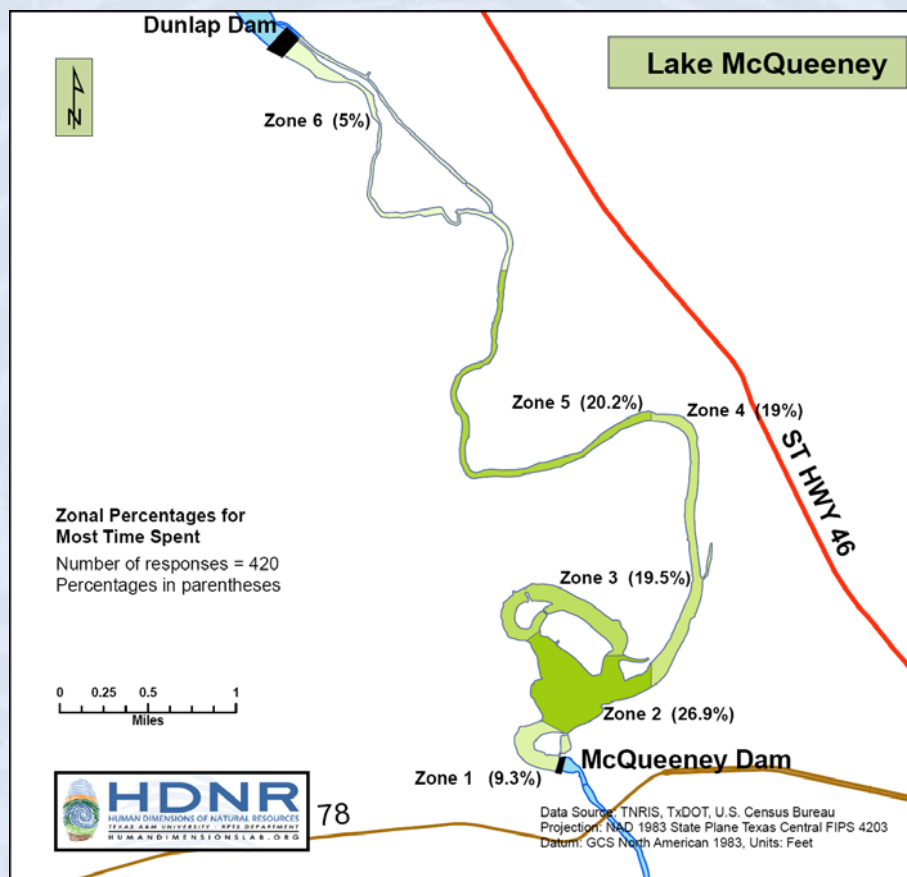


Restricting Use to Zones Across the Lake



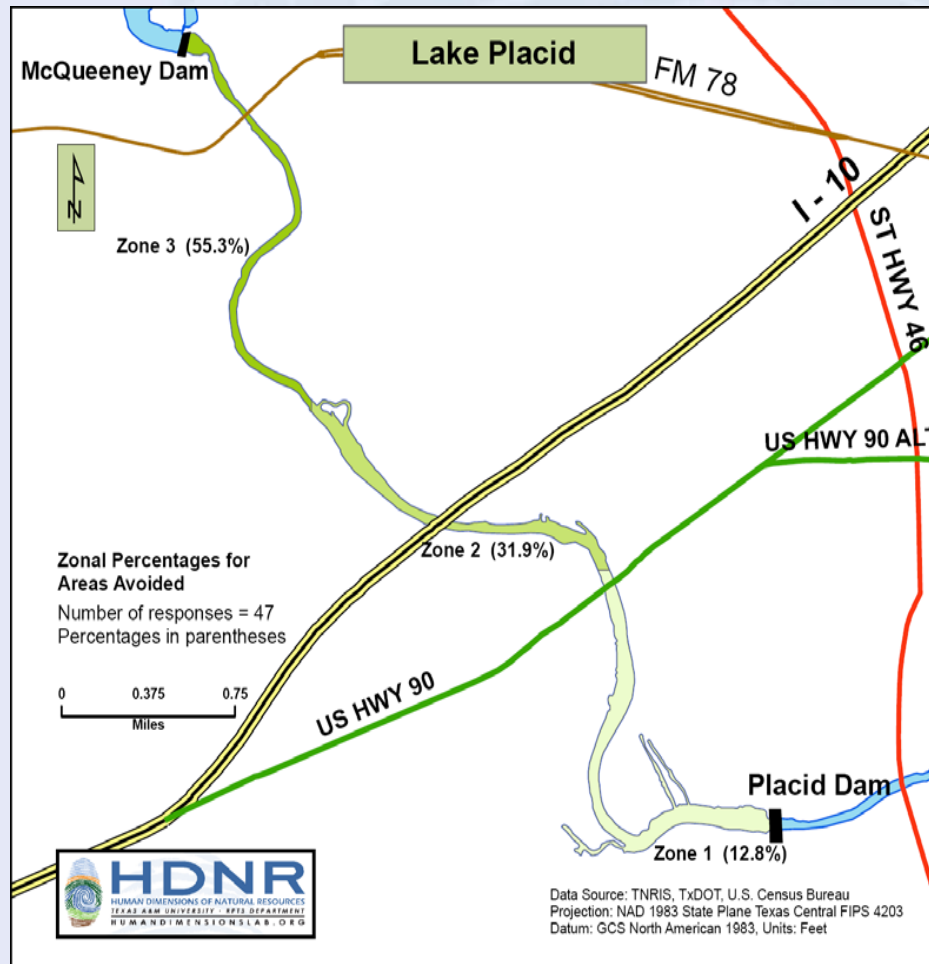


Areas Boaters' Spend Most Time





Areas Avoided



- **Reason**
 - Shallow
 - Obstacles (e.g., stumps, vegetation, sandbars, etc.)



Crowding - Enjoyment

- How did the **number of people you saw** affect your overall enjoyment
 - 34.0% - “**No effect**” on my enjoyment
 - 33.0% - “Detracted **a little** from my enjoyment
 - 25.2% - “Detracted **a lot** from my enjoyment



Safety

- In light of the **number of boats** you saw on the lake this season, please rate how safe you felt
 - 5.9% - “Extremely safe”
 - 40.2% - “Moderately safe”
 - 10.8% - “Not at all safe”
- In light of the **behavior of other boaters** on the lake this season, please rate how safe you felt
 - 2.9% - “Extremely safe”
 - 39.2% - “Moderately safe”
 - 11.8% - “Not at all safe”



Perceived Crowding

- ... how would you describe the boating conditions on the lake... for the 2009 season?
 - 25.2% - “Extremely crowded”
 - 31.3% - “Moderately crowded”



Issues of Concern

- **“Loud music played from watercraft”**
 - 18.6% consider it a “moderate problem”
 - 35.1% consider it a “big problem”
- **“Erosion of shoreline”**
 - 23.5% consider it a “moderate problem”
 - 33.7% consider it a “big problem”
- **“Large wakes from wakeboarding boats”**
 - 14.3% consider it a “moderate problem”
 - 41.8% consider it a “big problem”



Managerial Issues

- Respondents were most supportive of establishing a minimum age of 15 years for PWC operators & towing inflatables, in addition to requiring training for all PWC operators
- Other issues receiving support include more aggressive law enforcement and the dredging of the lake



Lake Placid

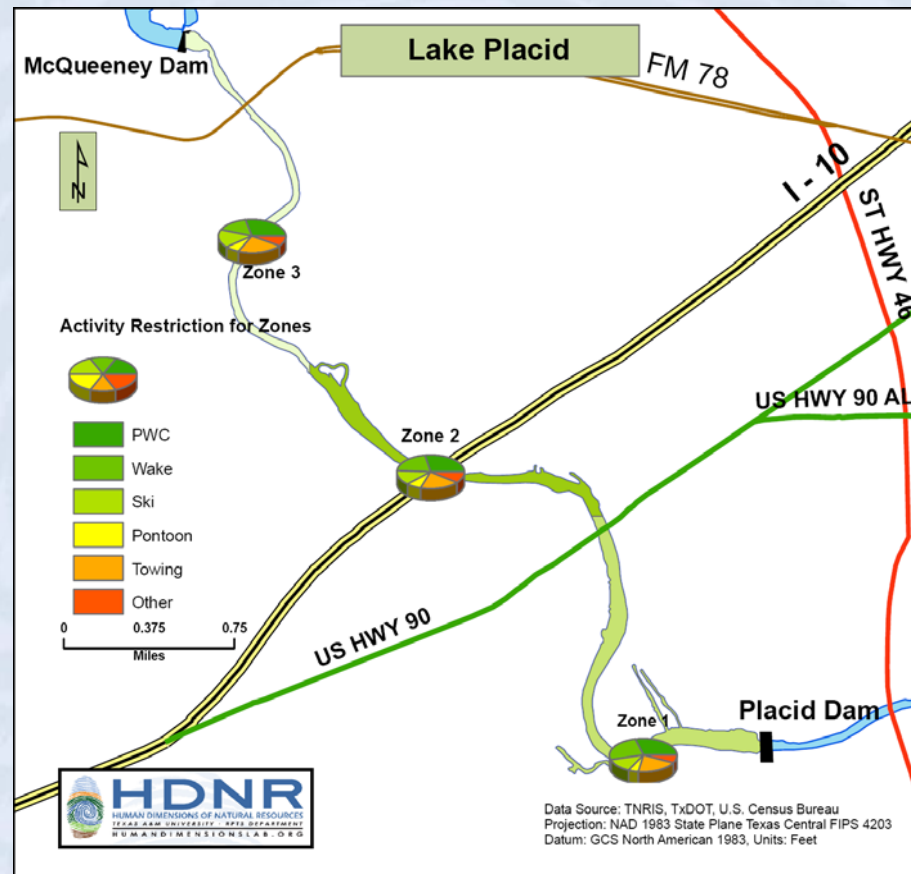


Lake Placid

- **70.1% lakeshore property owners**
- **Watercraft most often used – 2009 Season**
 - Speedboat/ski boat – 40.6%
 - Fishing/bass boat – 17.7%
 - Pontoon boat – 19.8%
 - Inflatable pulled behind another watercraft – 0
 - Wakeboard boat – 10.4%
 - PWC – 6.2%

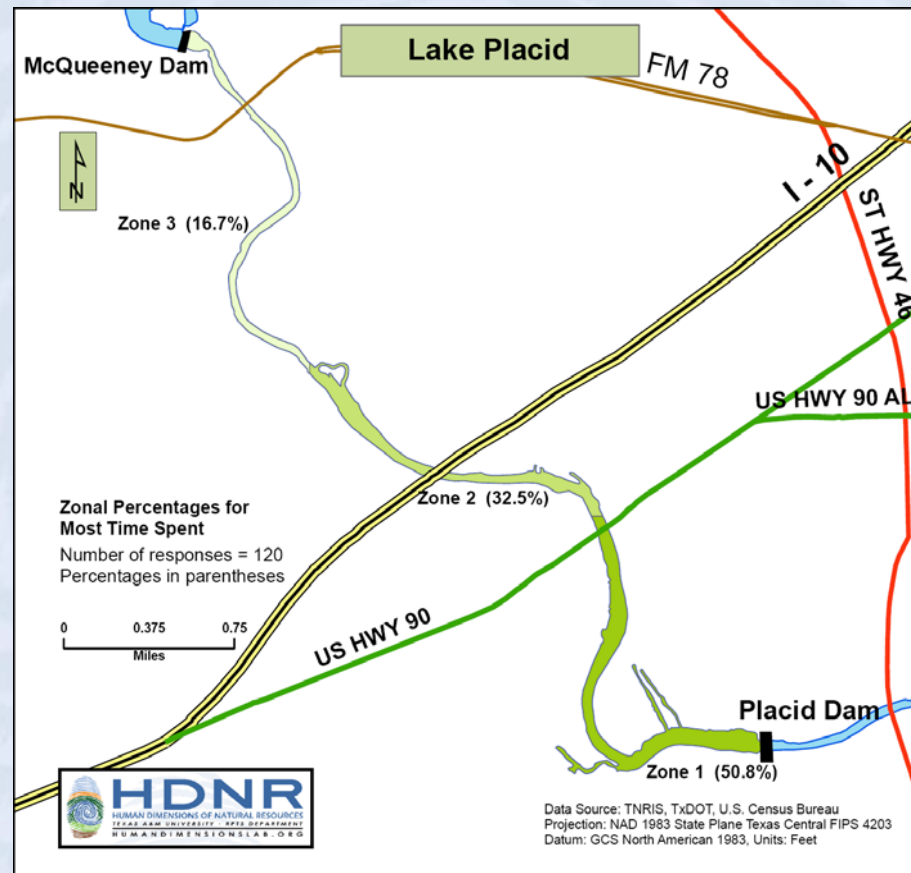


Restricting Use to Zones Across the Lake



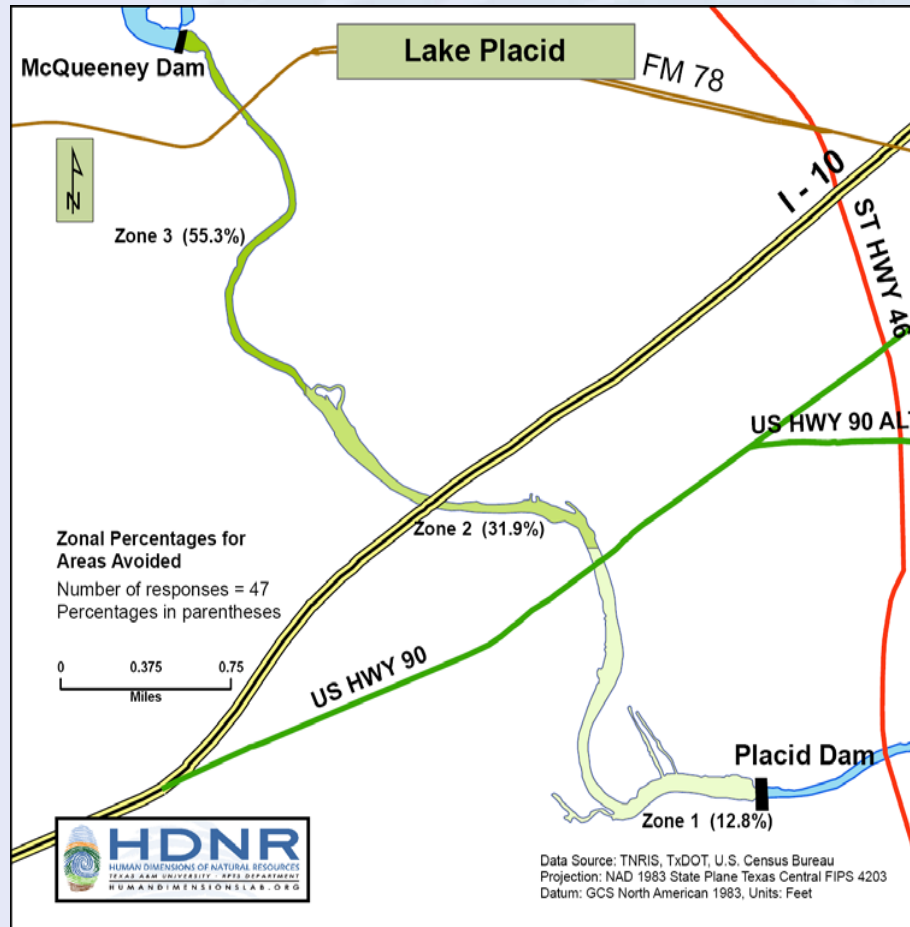


Areas Boaters' Spend Most Time





Areas Avoided



- **Reason**
 - Shallow
 - Submerged obstacles



Crowding - Enjoyment

- How did the **number of people you saw** affect your overall enjoyment
 - 27.0% - “**No effect**” on my enjoyment
 - 39.5% - “Detracted **a little** from my enjoyment
 - 23.5% - “Detracted **a lot** from my enjoyment



Safety

- In light of the **number of boats** you saw on the lake this season, please rate how safe you felt
 - 6.8% - “Extremely safe”
 - 43.6% - “Moderately safe
 - 8% - “Not at all safe”
- In light of the **behavior of other boaters** on the lake this season, please rate how safe you felt
 - 3.4% - “Extremely safe”
 - 43.2% - “Moderately safe
 - 11.4% - “Not at all safe”



Perceived Crowding

- ... how would you describe the boating conditions on the lake... for the 2009 season?
 - 26.0% - “Extremely crowded”
 - 45.6% - “Moderately crowded”



Issues of Concern

- **“Loud music played from watercraft”**
 - 24.7% consider it a “moderate problem”
 - 19.0% consider it a “big problem”
- **“Erosion of shoreline”**
 - 17.8% consider it a “moderate problem”
 - 25.7% consider it a “big problem”
- **“Large wakes from wakeboarding boats”**
 - 19.4% consider it a “moderate problem”
 - 41.8% consider it a “big problem”



Issues of Concern

- **“Inflatables/water toys trailing watercraft”**
 - 19.8% consider it a “moderate problem”
 - 28.4% consider it a “big problem”



Managerial Issues

- Respondents were most supportive of establishing a minimum age of 15 years for PWC operators & towing inflatables, in addition to requiring training for all PWC operators
- Other issues receiving support include more aggressive law enforcement and the dredging of the lake



Lakes Nolte, Gonzales (H4) & Wood (H5)



Lakes Nolte, Gonzales & Wood

- **Lakeshore property owners**
 - 70% Nolte
 - 66% Gonzales
 - 19% Wood



Choice of Watercraft

Nolte

- Speedboat/ski boat – 5.3%
- Fishing/bass boat – 36.8%
- Pontoon boat – 15.8%
- Inflatable pulled behind another watercraft – 0
- Wakeboard boat – 21.1%
- PWC – 21.1%

Gonzales

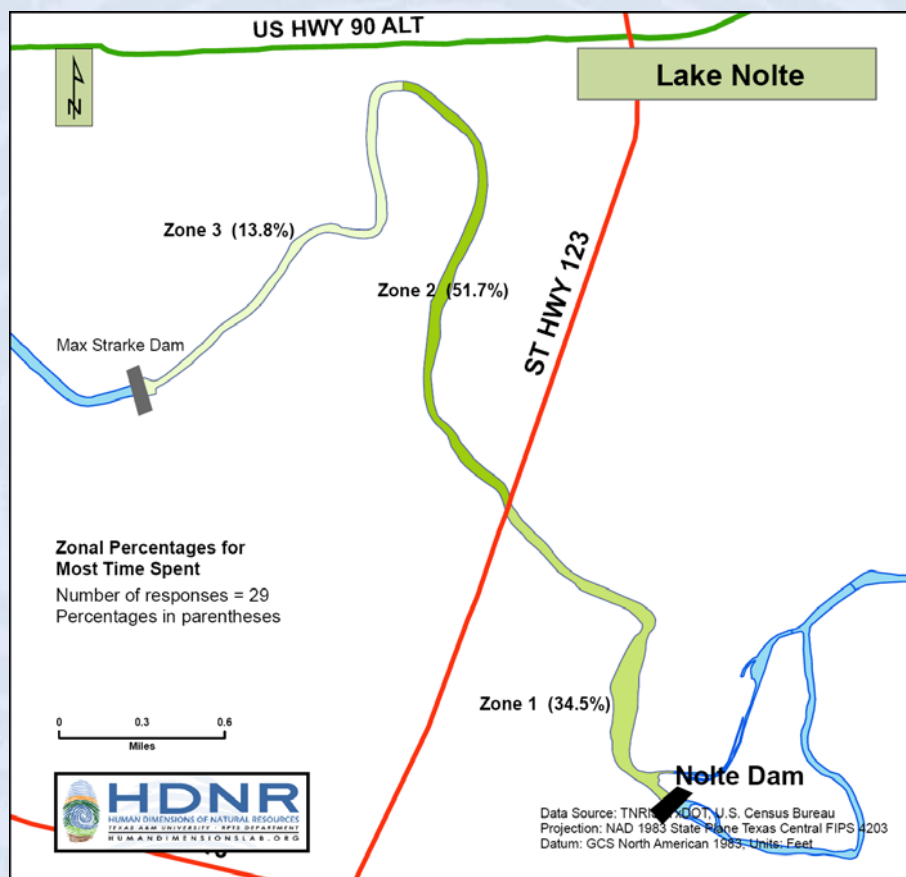
- Speedboat/ski boat – 0%
- Fishing/bass boat – 100.0%
- Pontoon boat – 0%
- Inflatable pulled behind another watercraft – 0
- Wakeboard boat – 0%
- PWC – 0%

Wood

- Speedboat/ski boat – 23.5%
- Fishing/bass boat – 58.8%
- Pontoon boat – 5.9%
- Inflatable pulled behind another watercraft – 0
- Wakeboard boat – 5.9%
- PWC – 0%

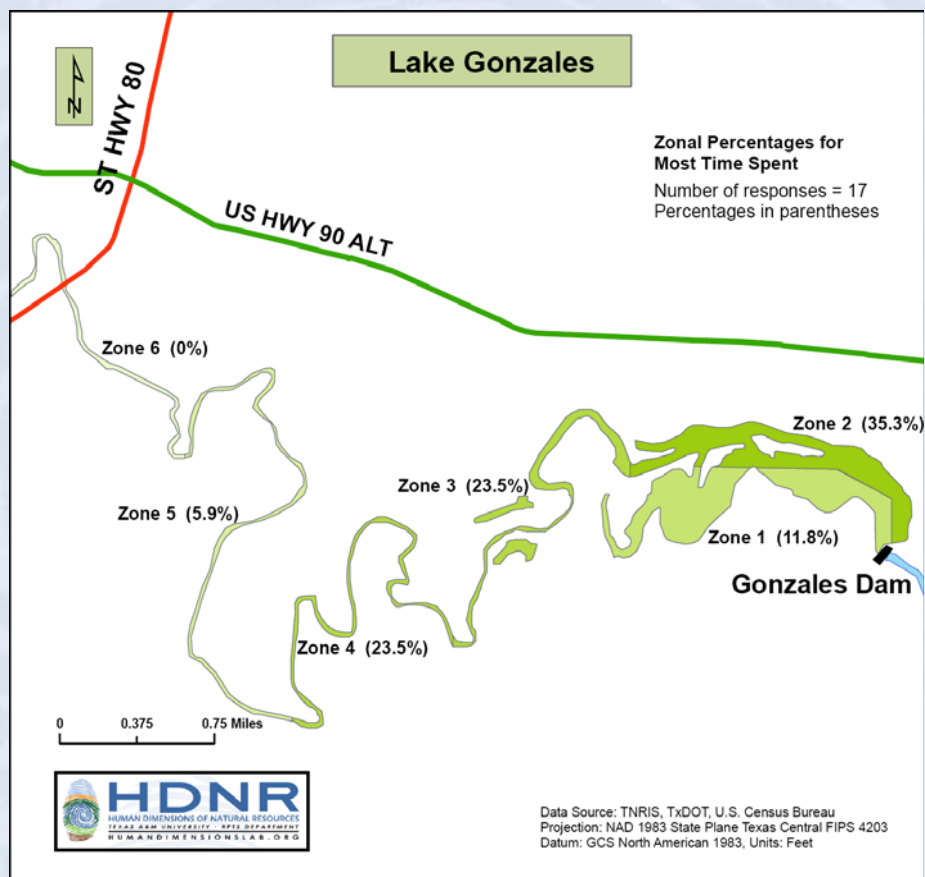


Areas Boaters' Spend Most Time



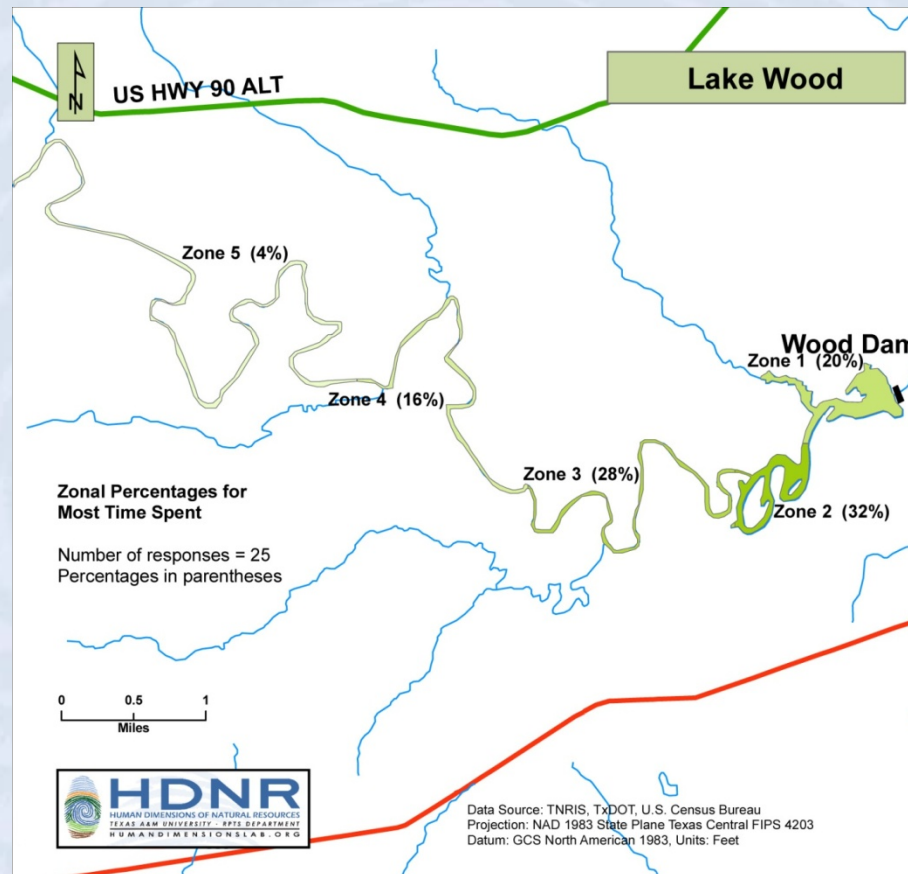


Areas Boaters' Spend Most Time



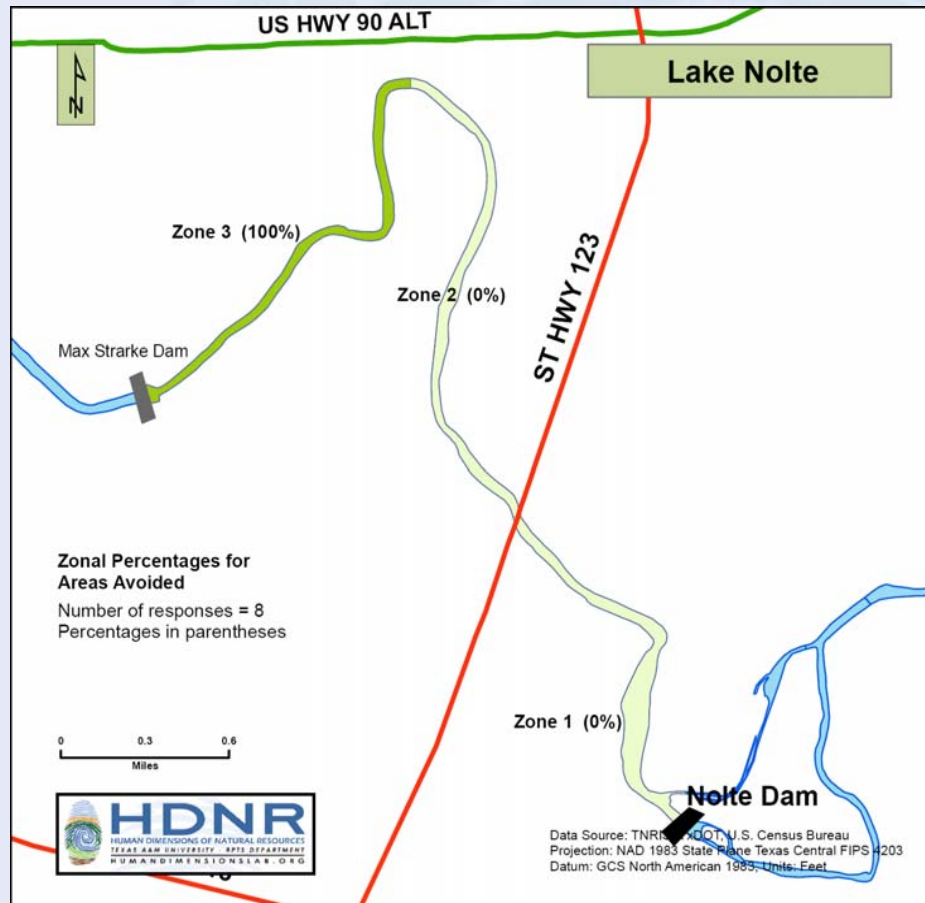


Areas Boaters' Spend Most Time





Areas Avoided

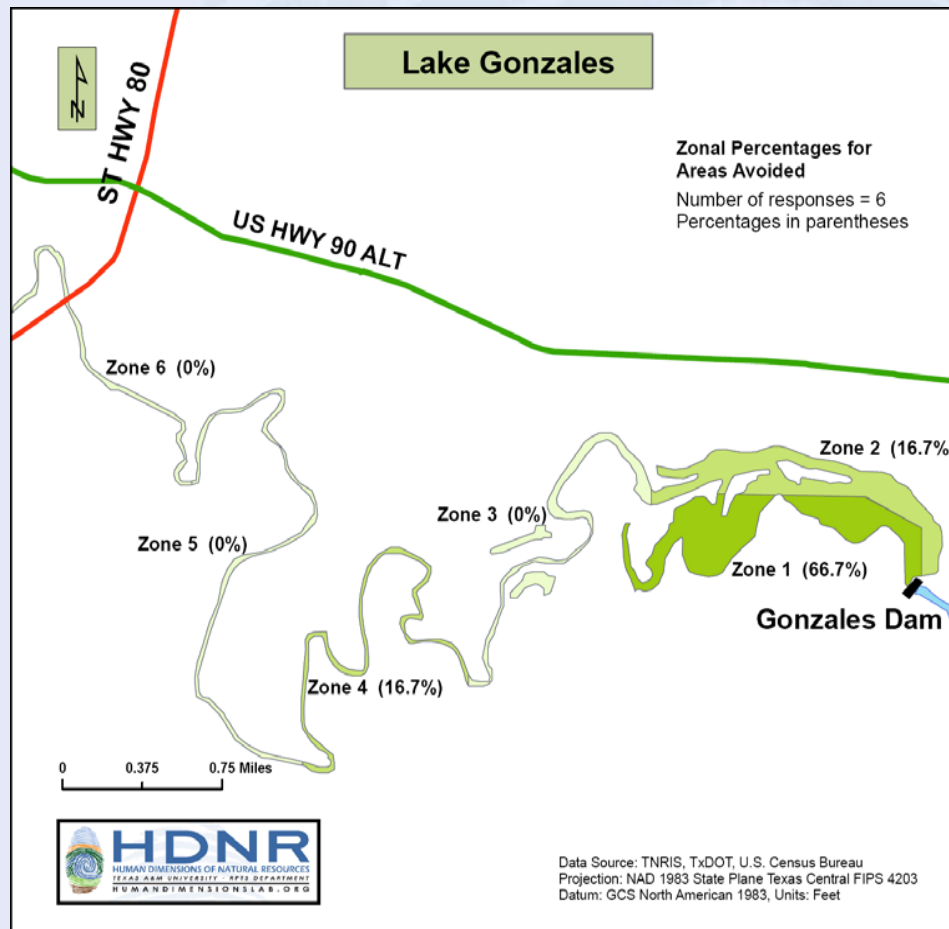


- Reason
 - Shallow
 - Submerged obstacles



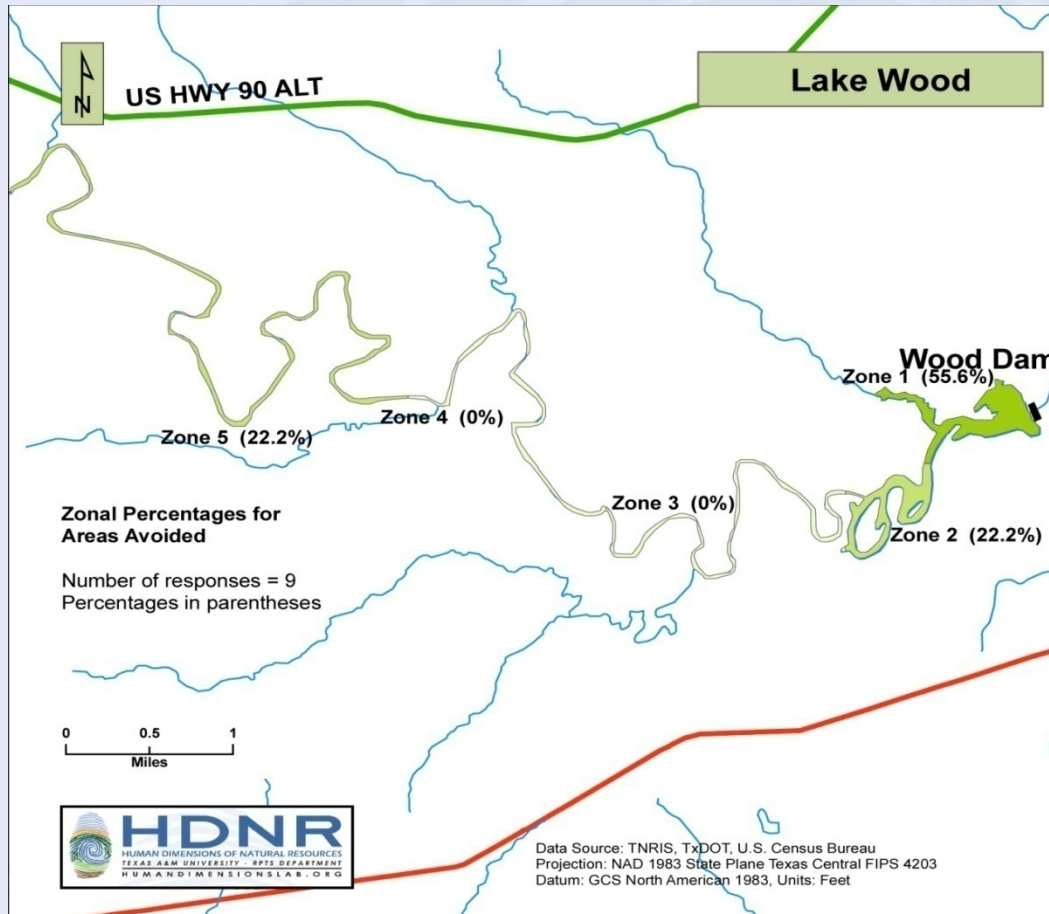
Areas Avoided

- Reason
 - Submerged obstacles
 - Shallow





Areas Avoided



- **Reason**
 - Submerged obstacles
 - Shallow



Crowding - Enjoyment

- How did the **number of people you saw** affect your overall enjoyment

Nolte

- 22.7% - Detracted a little from their enjoyment
- 13.6% - Detracted a lot from their enjoyment

Gonzales

- 66.7% - No effect on their enjoyment

Wood

- 60% - No effect on their enjoyment



Safety

- In light of the **number of boats** you saw on the lake this season, please rate how safe you felt
 - **Nolte:** 81.8% rated “moderately” to “extremely” safe
 - **Gonzales:** 91.7% : 81.8% rated “moderately” to “extremely” safe
 - **Wood:** 80.0% rated “moderately” to “extremely” safe
- In light of the **behavior of other boaters** on the lake this season, please rate how safe you felt
 - **Nolte:** 76.2% rated “moderately” to “extremely” safe
 - **Gonzales:** 100.0% : 81.8% rated “moderately” to “extremely” safe
 - **Wood:** 85.0% rated “moderately” to “extremely” safe



Perceived Crowding

- ... how would you describe the boating conditions on the lake... for the 2009 season?

Nolte

- 23.8% - “moderately crowded”
- 42.8% - “not at all crowded”

Gonzales

- 40% - “slightly crowded”
- 30% - “not at all crowded”

Wood

- 5% - “moderately crowded”
- 35% - “slightly crowded”
- 40% - “not at all crowded”



Issues of Concern

- **Nolte**
 - Litter on the shoreline, erosion of the shoreline, large wakes, towing inflatables
- **Gonzales**
 - Inadequate public toilet facilities, aquatic vegetation, insufficient navigational aides, debris at the launch ramps
- **Wood**
 - Aquatic vegetation, not enough public boat ramps, debris at launch ramps



Managerial Issues

- **All three lakes**
 - Respondents were most supportive of establishing a minimum age of 15 years for PWC operators & towing inflatables, in addition to requiring training for all PWC operators
 - Other issues receiving support include more aggressive law enforcement and the dredging of the lake
- **Gonzales & Wood**
 - Provide improved public access