

WELCOME TO THE FY22 STEERING COMMITTEE MEETING!

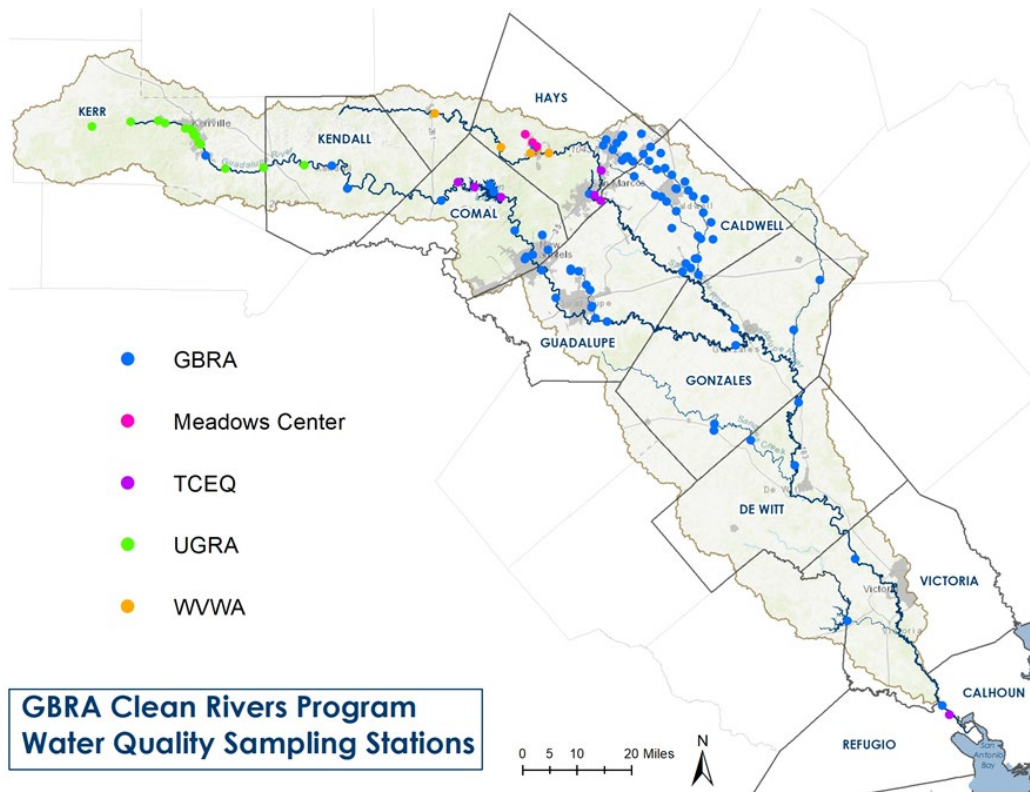
- Please sign in!
- Agendas are available near the sign in sheet
- Drinks available in the break room
- Please silence your cell phones

GUADALUPE RIVER BASIN 2022 CLEAN RIVERS PROGRAM STEERING COMMITTEE MEETING



ELIZABETH EDGERTON, WATER QUALITY PROGRAM SUPERVISOR; KRISTYN ARMITAGE, WATER QUALITY TECHNICIAN

FY22-23 CONTRACT



- 19 Routine Stations
- 14 Quarterly Stations
- 3 ALMs for FY22
- 3 ALMs planned for FY23?
- FY22: Watershed Characterization
- FY23: Basin Summary

FY22-23 GBRA CLEAN RIVERS PROGRAM BUDGET

	FY 2022 9/1/21-8/31/22	FY 2023 9/1/22-8/31/23	FY22 – FY23 Total
Total CRP Budget	\$135,378.00	\$135,378.00	\$270,756.00
Supplies	\$5,885.00	\$5,885.00	\$11,770.00
Equipment	\$ -	\$ -	\$ -
Contractual	\$14,550.00	\$14,550.00	\$29,100.00
Travel	\$7,180.00	\$7,180.00	\$14,360.00

- \$17,500 increase in funds has been approved, for equipment and supplies
- An additional funds increase has been requested but is not yet approved

NEW EQUIPMENT PURCHASE



- Apex Backpack Electrofisher
- Replaces previous smith-root backpack unit
 - Over 11 years in service

DRAFT 2022 TEXAS INTEGRATED REPORT

Delistings:

- 1803B – Sandies Creek (AU 1803B_01)
 - Impaired fish community
 - Impaired macrobenthic community
- 1815 – Cypress Creek (AU 1815_01)
 - Originally listed in error – 24 HR DO dataset was not temporally representative

New Listing:

- 1801 – Guadalupe River Tidal
 - Bacteria



GUADALUPE BASIN HCP

- HCP update email went out yesterday
- Send an email to this address if you want to be added to the HCP listserv:
 - grhcp@gbra.org
- First public meeting June 28th, held in person in the River Annex



Water Quality Technician – Kristyn Armitage

- BS in Biology
- MS in Aquatic Resources
 - Both from Texas State University
- Studied intra and interspecies variability in mercury in Texas marine fish and shellfish
- Previously worked at the Meadows Center
 - Invasive species removal and native restoration under EAHCP.



GBRA 2021 Aquatic Life Monitoring Events

- TCEQ Station 12576
 - Geronimo Creek at Haberle Road
- TCEQ Station 12631
 - Blanco River at CR 295
- TCEQ Station 15111
 - Guadalupe at Riverview Road
- TCEQ Station 12640
 - Plum Creek at CR 135



TCEQ/TSSWCB Station 12576

Geronimo Creek at Haberle Road

- Fish Community
 - Exceptional ALU Score
 - 18 Species
- Macroinvertebrate Community
 - Exceptional ALU Score
 - 39 Species
- Habitat
 - High HQI Score
- Stream Assessment Data Exceeds 2020 WQ Standard
- No freshwater mussel species found during 5 person hour time search



TCEQ/TSSWCB STATION 12576 IN STREAM SEGMENT 1804A GERONIMO CREEK AT HABERLE ROAD NEAR GERONIMO, TX

Aquatic Life Monitoring Events	Fish Community	Macroinvertebrate Community	Habitat
Aquatic Life Use Designation	High (41-48)	High (29-32)	High (20-25)
Currently Assessed Status*	Exceptional (49)*	Exceptional (38)*	High (22)*
FY21 Index Period Score	High (45)	Exceptional (41)	High (22)
FY21 Critical Period Score	Exceptional (50)	Exceptional (39)	High (21)
FY21 Average	Exceptional (48)	Exceptional (40)	High (22)

*Current Assessment Status Published in 2020 TCEQ Texas Integrated Report (12/01/2011 – 11/30/2018)

TCEQ Station 12631

Blanco River at CR 295

- Fish Community
 - High ALU Score
 - 21 Species
- Macroinvertebrate Community
 - Intermediate ALU Score
 - 45 Species
- Habitat
 - High HQI Score
- Stream Assessment Data Meets 2020 WQ Standard with concerns for Benthic Macroinvertebrates
- No freshwater mussels discovered during 5 person hour time search



TCEQ STATION 12631 IN STREAM SEGMENT 1809_01 BLANCO RIVER AT CR 295 IN SAN MARCOS, TX

Aquatic Life Monitoring Events	Fish Community	Macroinvertebrate Community	Habitat
Aquatic Life Use Designation	High (42-51)	High (31-35)	High (20-25)
Currently Assessed Status*	Not Assessed*	Not Assessed*	Not Assessed*
FY21 Index Period Score	High (44)	Intermediate (27)	High (24)
FY21 Critical Period Score	High (47)	High (33)	Exceptional (26)
FY21 Average	High (46)	Intermediate (30)	High (25)

*Current Assessment Status Published in 2020 TCEQ Texas Integrated Report (12/01/2011 – 11/30/2018)

TCEQ Station 15111

Guadalupe at Riverview Road



- Fish Community
 - High ALU Score
 - 16 Species (Electrofishing Difficulties)
 - 2 Darter species
- Macroinvertebrate Community
 - Exceptional ALU Score when Coefficient of Variation (CV) is added to score.
 - 47 Species
- Habitat
 - High HQI Score
- Stream Assessment Data Meets 2020 WQ Standard with concerns for Fish
- 3 Guadalupe Fatmucket ESA Candidate Species
- River otter observed during April Assessment

TCEQ STATION 15111 IN STREAM SEGMENT 1806_02 GUADALUPE RIVER AT RIVERVIEW ROAD IN INGRAM, TX

Aquatic Life Monitoring Events	Fish Community	Macroinvertebrate Community	Habitat
Aquatic Life Use Designation	Exceptional (>51)	Exceptional (>35)	Exceptional (26-31)
Currently Assessed Status*	Exceptional (52)*	Exceptional (36)*	High (26)*
FY21 Index Period Score	High (44)**	High (33)	High (24)
FY21 Critical Period Score	Exceptional (54)	Exceptional (37)	High (24)
FY21 Average	High (49)	Exceptional (35+CV)	High (24)

*Current Assessment Status Published in 2020 TCEQ Texas Integrated Report (12/01/2011 – 11/30/2018)

**Only seining collection techniques utilized due to electrofishing equipment malfunction.

TCEQ/TSSWCB Station 12640

Plum Creek at CR 135

- Fish Community
 - Limited ALU Score
 - 11 Species (Electrofishing Difficulties)
 - 3 Catfish species
- Macroinvertebrate Community
 - High ALU Score
 - 39 Species
- Habitat
 - High HQI Score
- Stream Assessment Data Meets 2020 WQ Standard with concerns for Fish
- 1 Guadalupe Orb EAA Candidate Species
- River otter observed during April Assessment



TCEQ/TSSWCB STATION 12640 IN STREAM SEGMENT 1810_01 PLUM CREEK AT CR 135 IN LULING, TX

Aquatic Life Monitoring Events	Fish Community	Macroinvertebrate Community	Habitat
Aquatic Life Use Designation	High (42-51)	High (30-34)	High (20-25)
Currently Assessed Status*	Intermediate (39)*	High (31)*	Intermediate (19)*
FY21 Index Period Score	Limited (34)**	High (30)	High (22)
FY21 Critical Period Score	Intermediate (36)	High (30)	High (22)
FY21 Average	Limited (35)	High (30)	High (22)

*Current Assessment Status Published in 2020 TCEQ Texas Integrated Report (12/01/2011 – 11/30/2018)

**Only seining collection techniques utilized due to electrofishing equipment malfunction

GBRA 2022 Aquatic Life Monitoring Events

- TCEQ Station 12684
 - South Fork Guadalupe at Hunt Lion's Park
- TCEQ Station 18595
 - Perdido Creek at FM 622
- TCEQ Station 22082
 - Guadalupe River upstream FM 1376



TCEQ Station 12684 segment 1818

South Fork Guadalupe at Hunt Lion's Park

18 Fish Species Identified:

- Central Stoneroller
- Blue Catfish
- Orange Throated Darter
- Guadalupe Bass



TCEQ Station 18595 segment 1807A

Perdido Creek at FM 622

16 Fish Species Identified:

- Spotted Gar
- Carp Sucker
- Warmouth
- Black bullhead catfish



Carp Sucker



Black Bullhead Catfish



Warmouth



Spotted Gar