



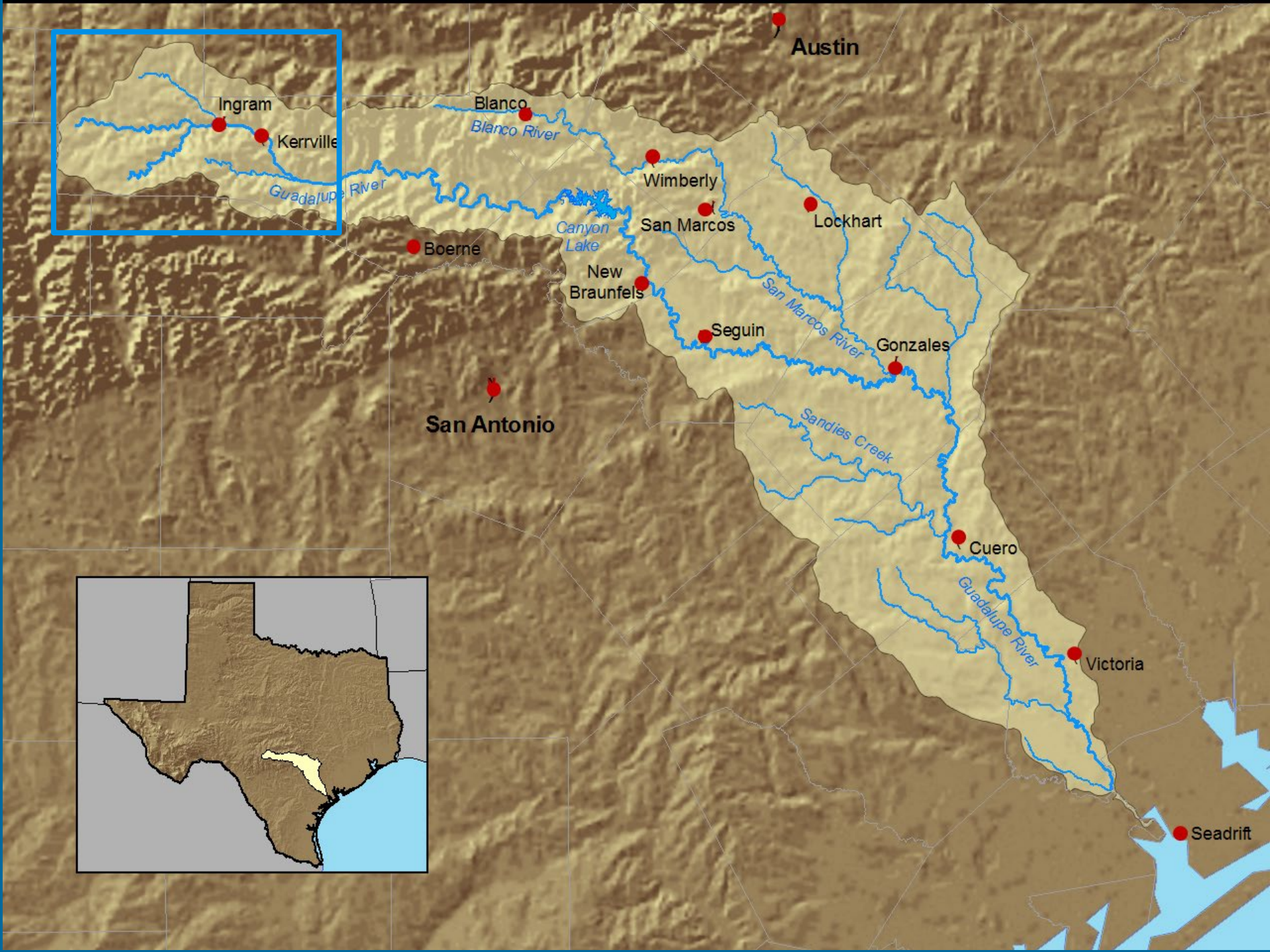
CRP Activities in Kerr County

Tara Bushnoe

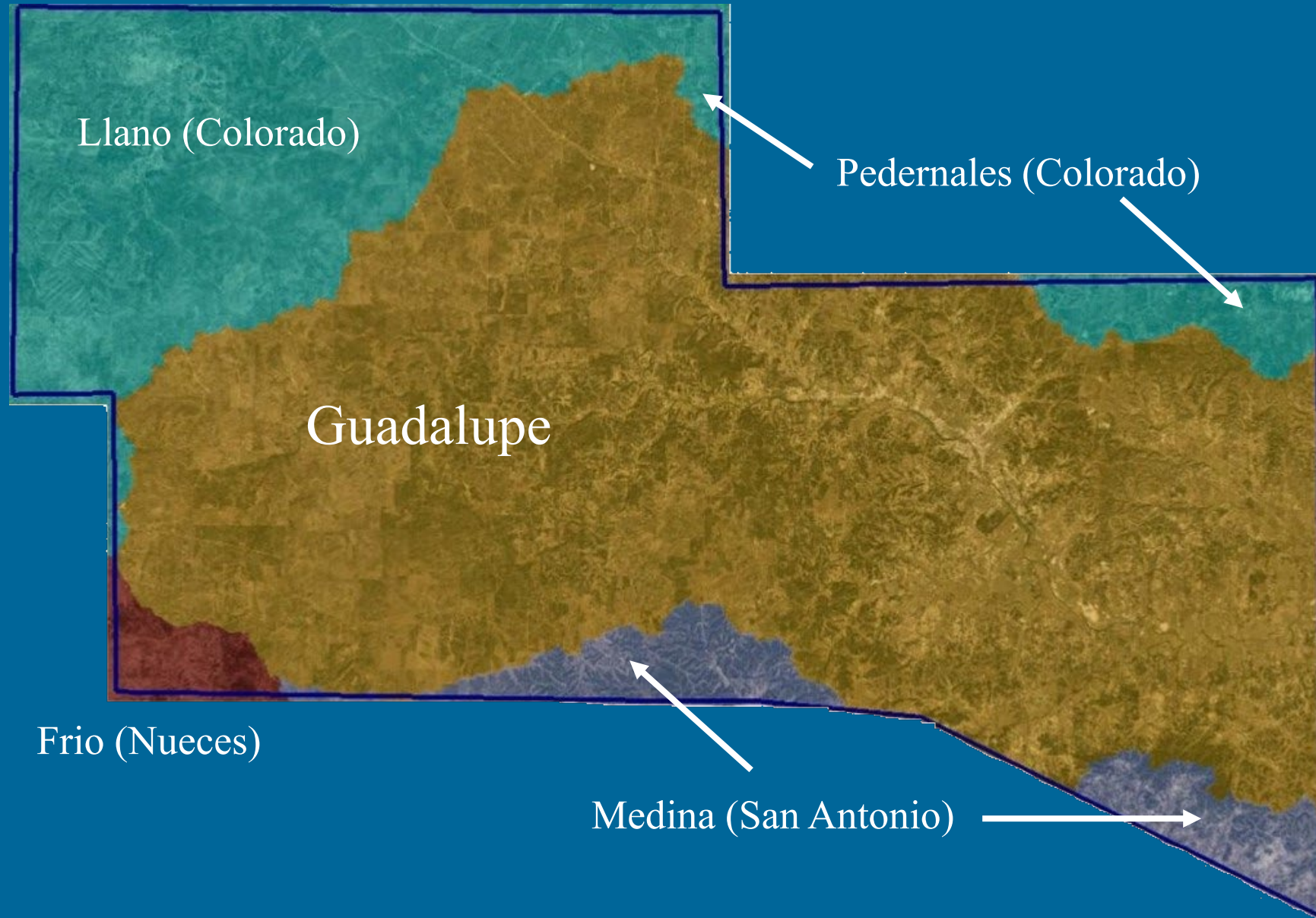
Upper Guadalupe River Authority

Natural Resources Manager

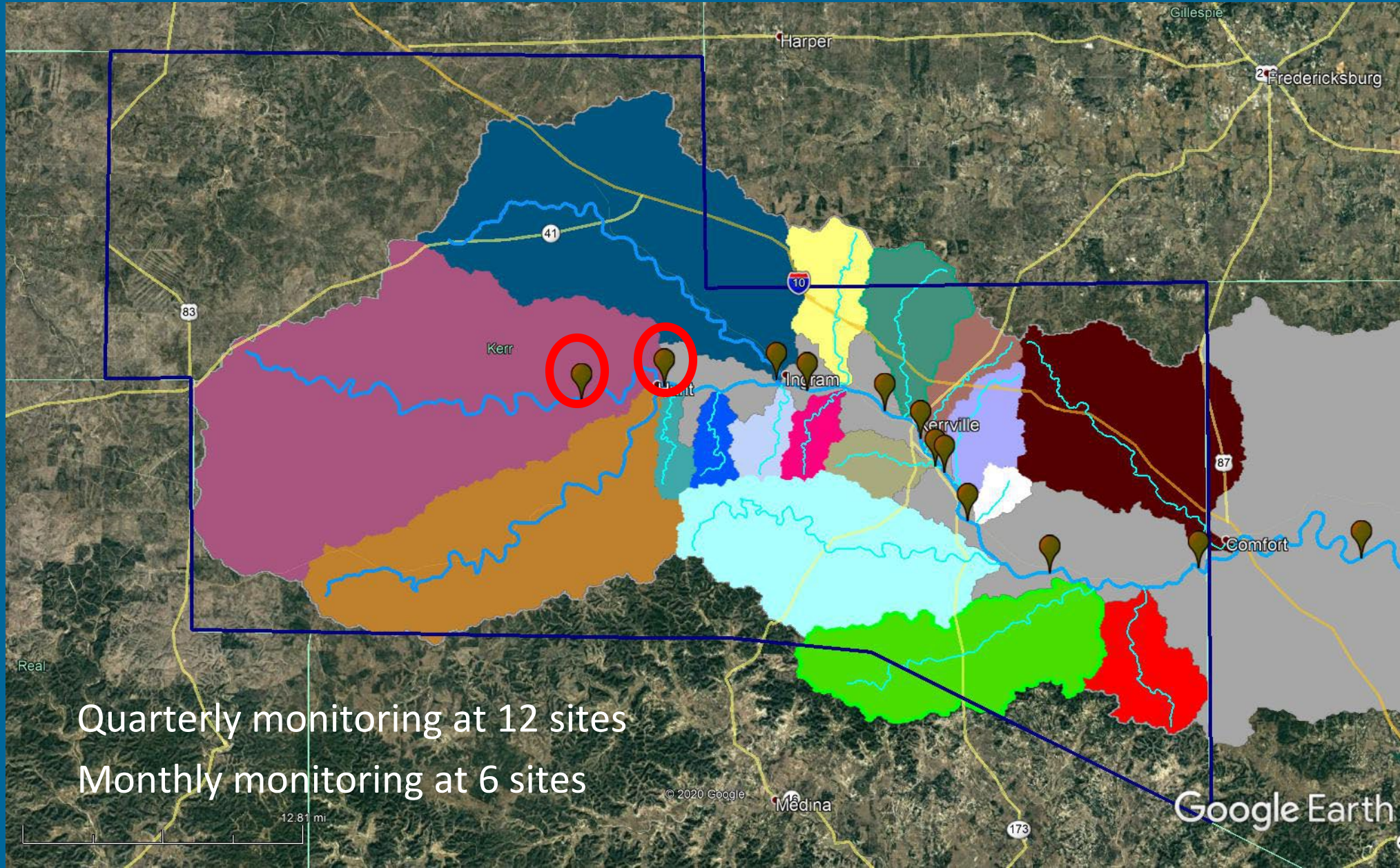




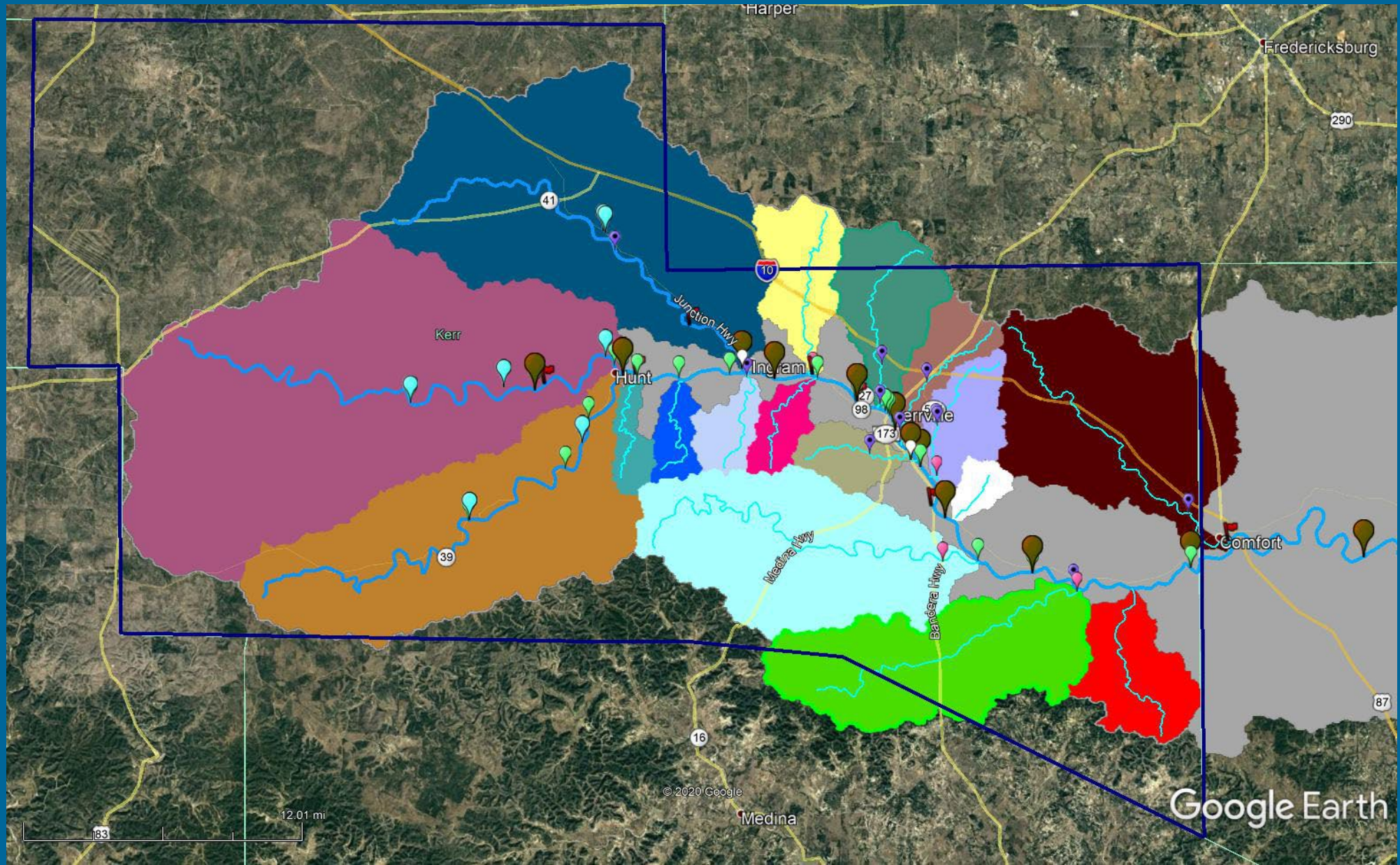
Kerr County River Basins



CRP Water Quality Monitoring



UGRA Water Quality Monitoring



WQ Monitoring Summary 2021

■ CRP

- 20 sampling events
- 17 sites
- 1,077 parameters tested

■ UGRA Water Quality Programs

- 34 sampling events
- 38 sites
- 1,182 parameters tested
- 14 water quality investigations



2022 Integrated Report Findings

12/13 – 11/20

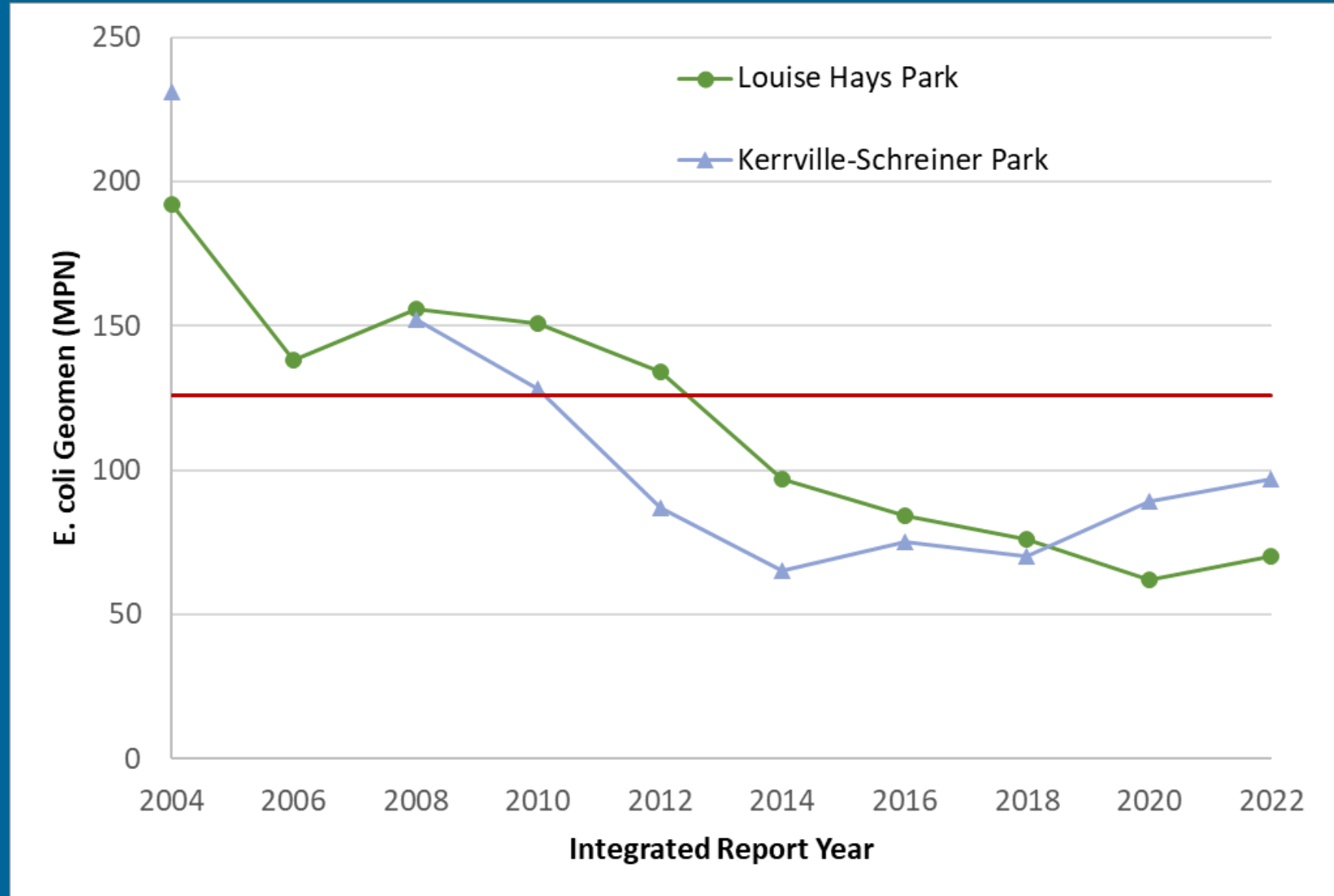
Town Creek
Geomean = 375

Quinlan Creek
Geomean = 232

Camp Meeting Creek
Geomean = 220
DO concern

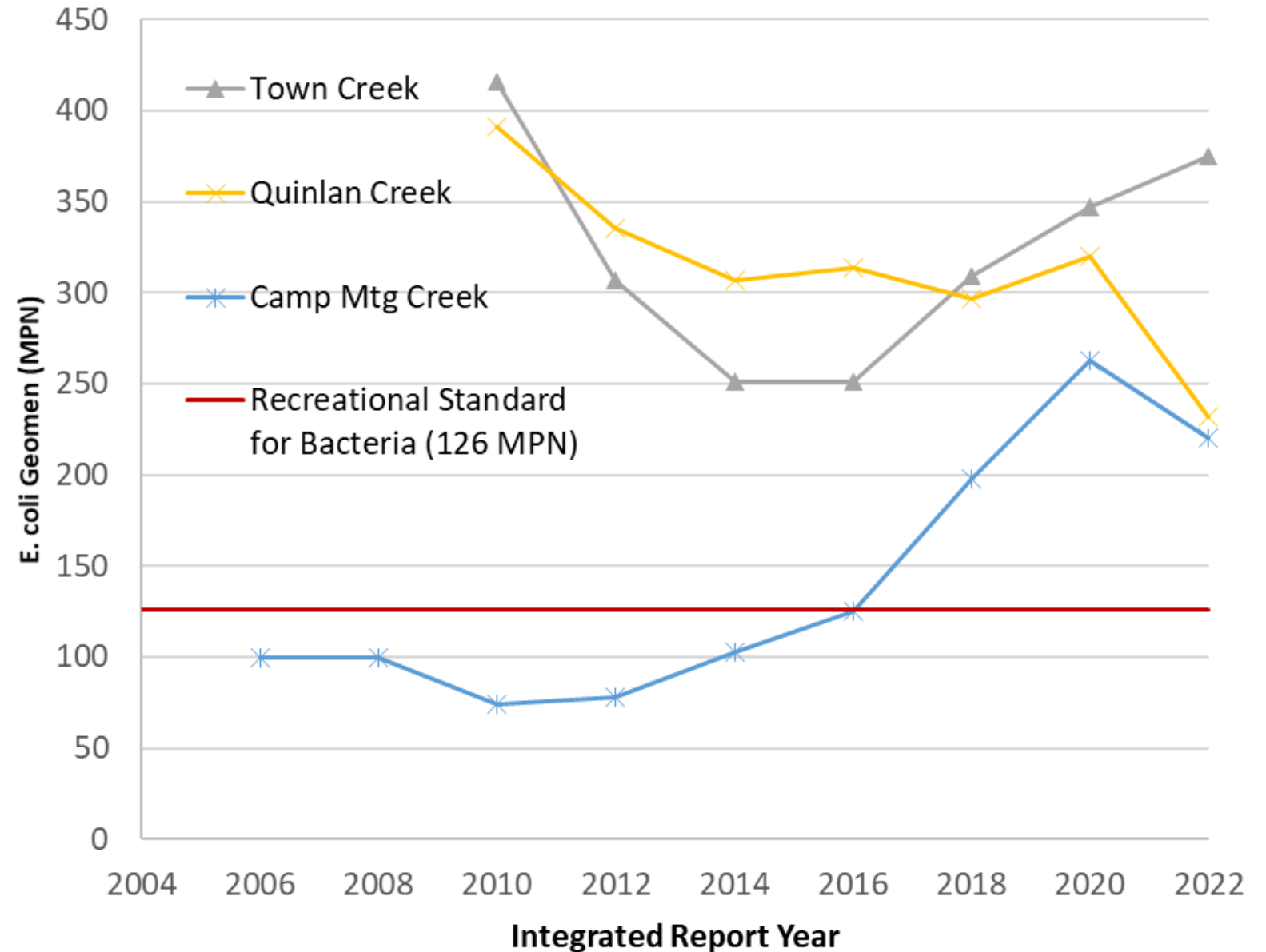
E. coli Concerns – Guadalupe River in Kerrville

- Mainstem Guadalupe River in Kerrville
- Integrated Report results for AUs:
 - 1806_10 (LHP)
 - 1806_09 (KSP)

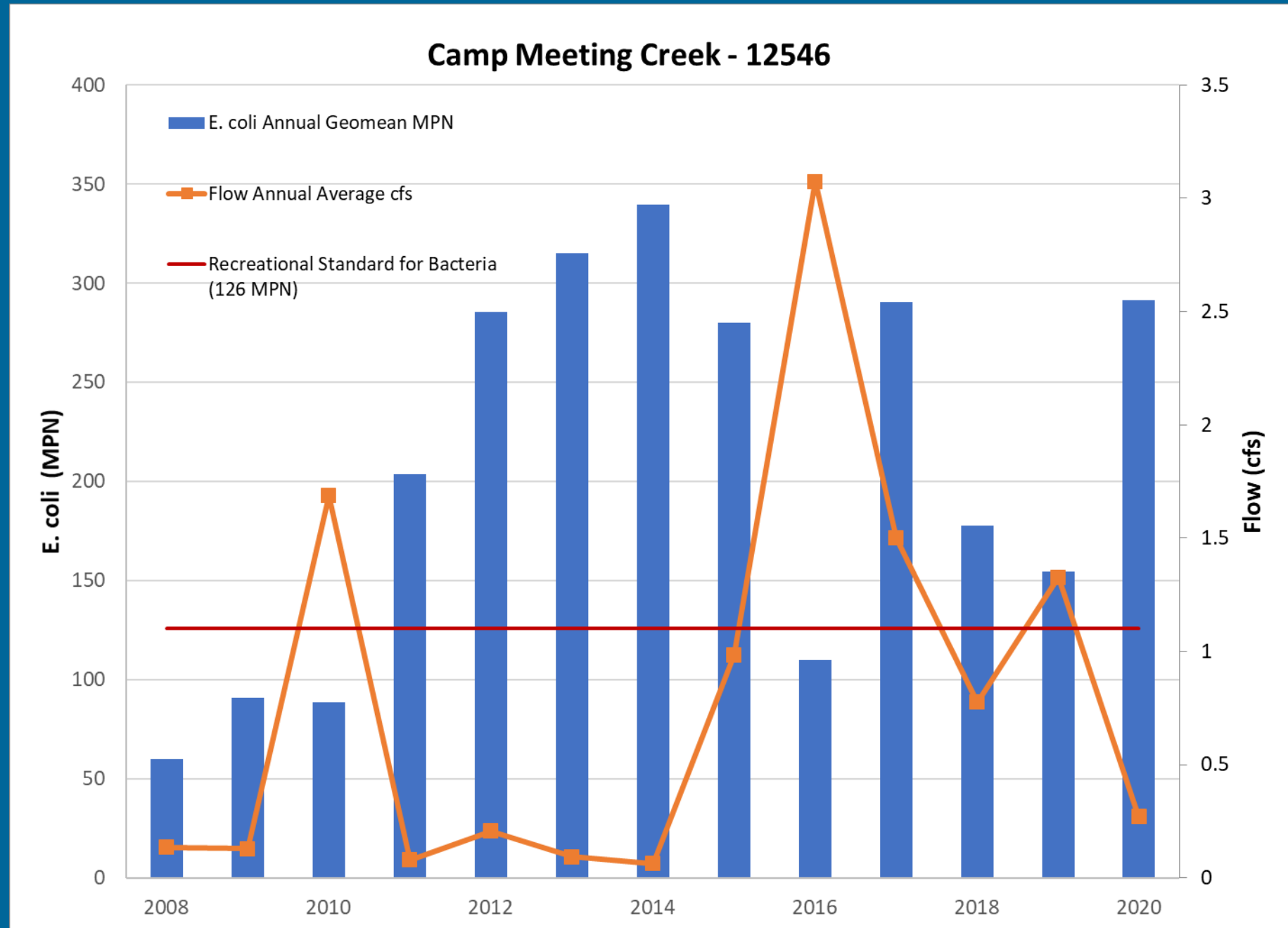


E. coli Concerns – Urban Creeks

- Primary urban creeks in Kerrville
- Integrated Report results for AUs:
 - 1806A (Camp Mtg Ck)
 - 1806D (Quinlan Ck)
 - 1806E (Town Ck)



- E. coli and flow data collected during year indicated
- E. coli geomean – 12 to 34 data points per year
- Flow annual average – 4 to 26 data points per year



Bacteria Reduction Plan

- Mainstem Impairments - 2002
- TMDL - 2007
- Implementation Plan – 2011
- Town and Quinlan Impairments – 2011
- Technical Support Document – 2017
- Implementation Plan Revision – 2018
- Camp Meeting Impairment – 2018
- Technical Support Document – 2022



Bacteria Reduction Plan Implementation Status

- Reduce Bacteria Contributions
 - Wildlife
 - Humans
 - Pet Waste
 - Urban Runoff
- Preserve Riparian Areas
- Promote Green Infrastructure



Public Outreach Activities - 2021

- Community Presentations
- Information booths
- Radio PSAs
- Newspaper articles and ads
- Volunteer Summer Study
- River Clean Up
- EduScape tours
- Demonstration area





February 2021



June 2021





Tara Bushnoe
(830) 896-5445
tbushnoe@ugra.org