



Dry Comal Creek and Comal River Watershed Protection Plan Implementation Update

Phillip Quast
Watershed Supervisor
City of New Braunfels

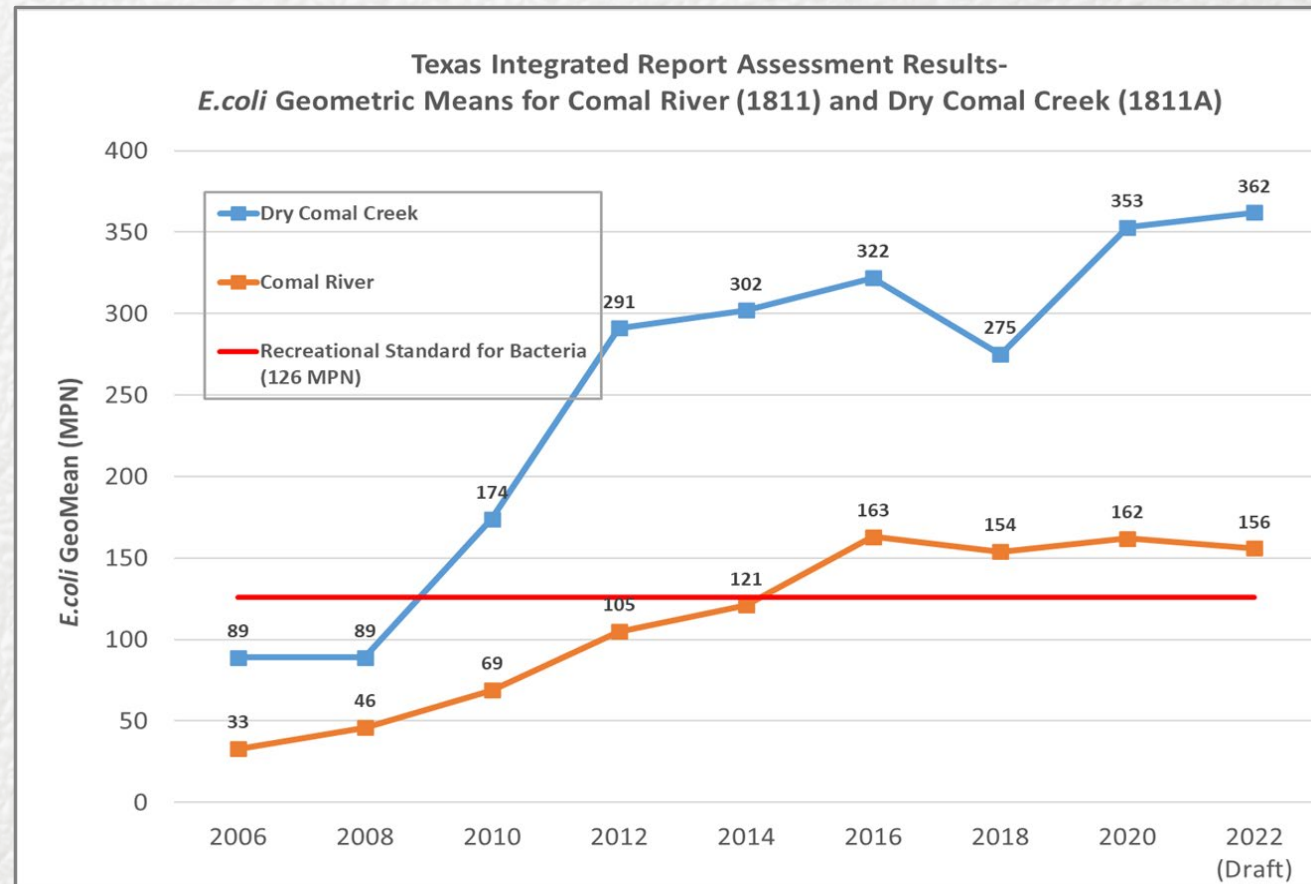
March 15, 2023

Water Quality Concerns

Dry Comal Creek: initially placed on the 303(d) list for bacteria in 2010.

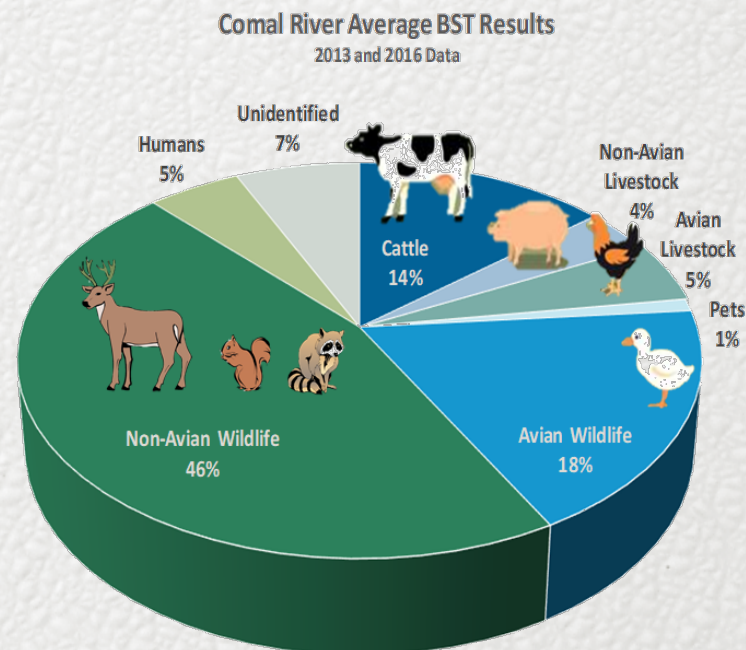
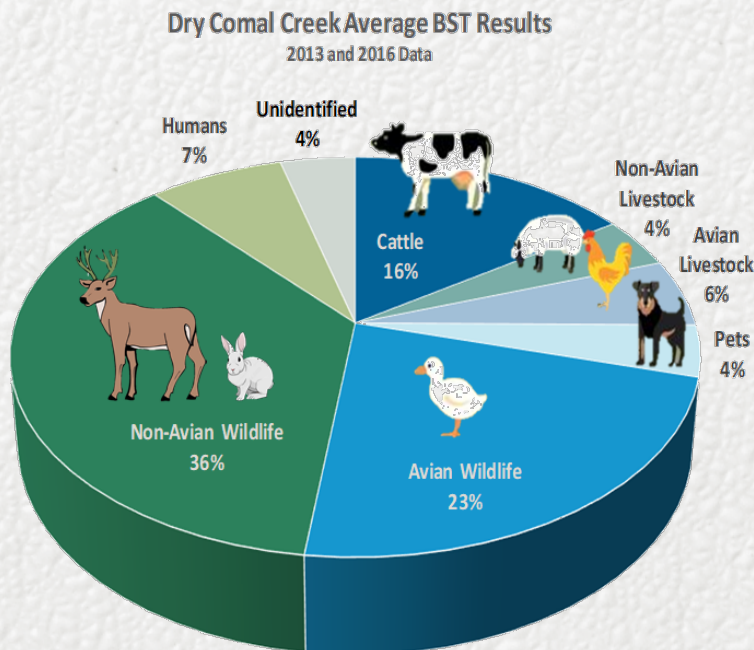
Comal River: initially placed on the 303(d) list for bacteria in 2016.

Note: Each data point represents the GeoMean of approx. 84 samples. For example, the 2020 assessment data points include 84 samples collected 2011-2018.



Water Quality Concerns

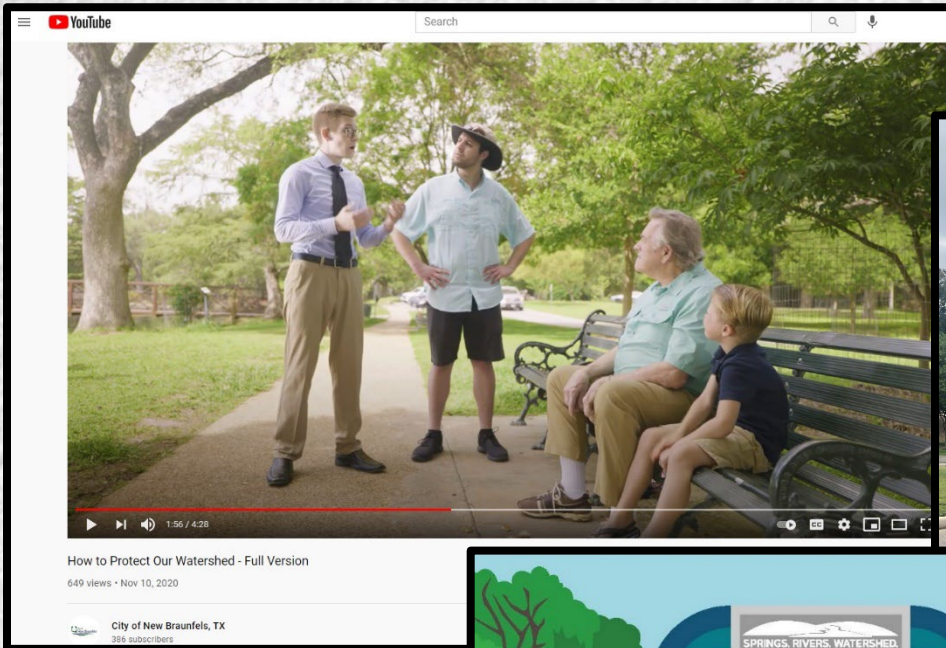
- Bacteria Source Tracking (BST) analysis was conducted in 2013 & 2016 by Texas A&M lab to identify sources of bacteria in creek/ river
- Approx. 60% of the bacteria found in Comal River & Dry Comal Creek from wildlife
- The Watershed Protection Plan (WPP) for the Dry Comal Creek and Comal River includes wildlife management measures to address bacteria loading. WPP accepted by TCEQ and EPA in September 2018. Funding also provided by TCEQ/ EPA to support WPP implementation.



Previous Efforts




Previous Efforts




Hands-on Learning Activity

- Hands-on activity focuses on the how bacteria levels of a sample are determined in a laboratory setting
- Classroom kits consist of a handbook for the activity, student workbooks, Petri dishes, and cotton swabs
- CoNB staff provides kits to teachers interested in incorporating this activity into their curriculum


What is *E. coli*?




A rod-shaped bacterium found in the environment, food and our intestines



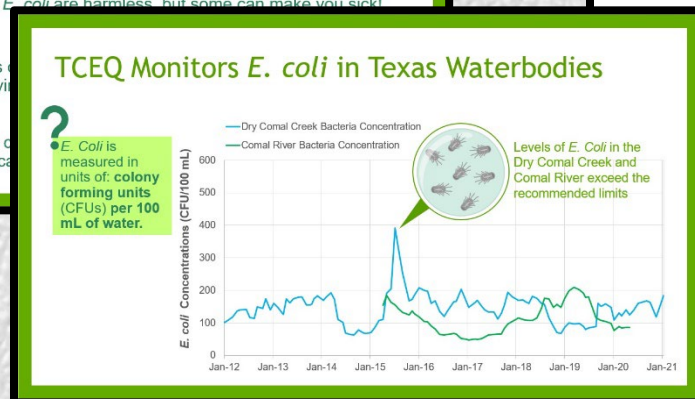
Most types of *E. coli* are harmless, but some can make you sick!



High numbers of bacteria and viruses can cause illness



E. coli can be cultured and ideal indicator



Wildlife Waste Removal

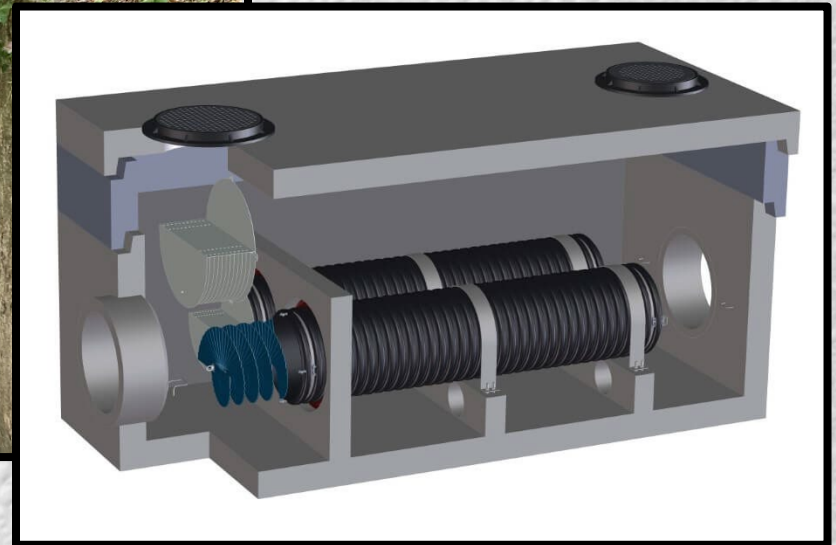
- CoNB has contracted with an animal waste removal service to pick up animal waste in Landa Park
- Waste removal service is performed twice per month
- Since May 2021, over 3000 lbs. of waste has been removed



BMPs Addressing Stormwater

Stormwater Structural BMP

- Design work has begun for a stormwater filtration system to be installed at Eikel St. and Santa Clara Ave.
- Pilot study; upstream and downstream data collected will be used to determine effectiveness of filter system
 - Two biofiltration beds will also be monitored



BMPs Addressing Stormwater

Stormwater Structural BMP - Biofiltration



Next Steps...

- **Construction of Stormwater Structural BMP tentatively to occur in FY 2024**
- **Outreach and Education**
 - **Digital campaign is being designed by CoNB Communications Dept. – Social media, strategic advertisement placement**
 - **Printed infographics in Herald-Zeitung, Community Impact**

Watershed Events

- **Dos Rios Watershed Cleanup**
 - City-wide annual single-day volunteer event
 - Held in early October
- **Adopt-a-Spot Program**





Additional WPP Information:

www.newbraunfels.gov/wpp



Questions?

Phillip Quast
Watershed Supervisor
City of New Braunfels
(830) 221-4651
pquast@newbraunfels.gov